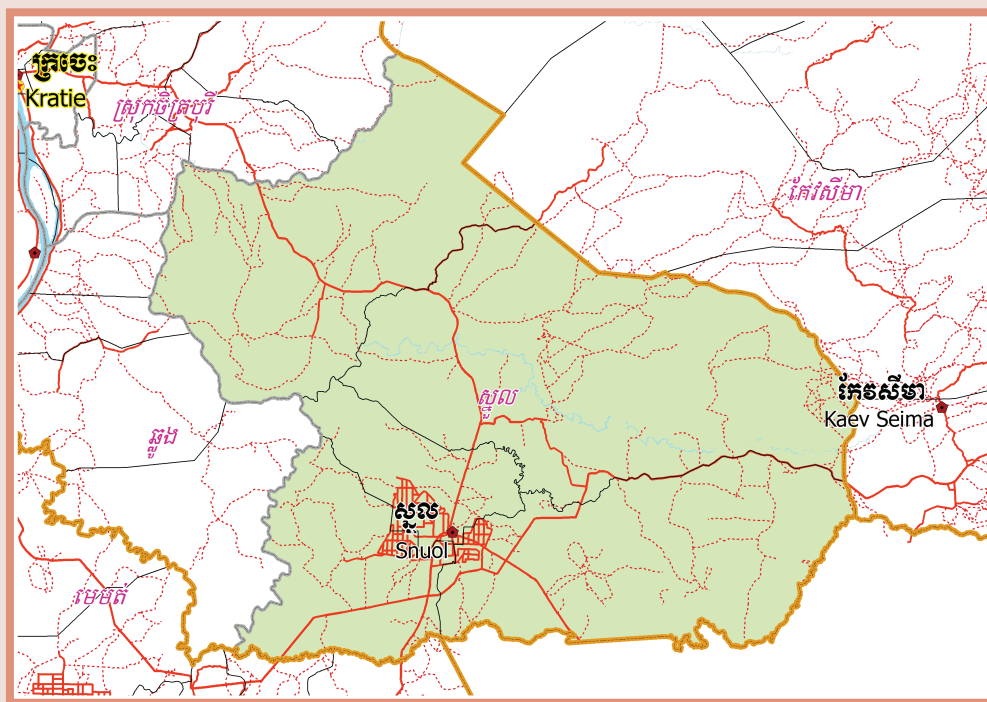


A decorative horizontal line featuring a central rose flanked by symmetrical, stylized floral or scrollwork patterns.



October 2009

Snuol District Data Book 2009

District Code Nr: 1005

Kracheh Province

Table of Contents

List of Abbreviations	i
Glossary.....	ii
Preface	vi
Introduction	vii
SECTION A: GEOGRAPHY	1
1 Administration and Infrastructure.....	3
2 Land Use and Natural Resources.....	5
3 Geography	7
3.1 Land Area	7
3.2 Distances between Offices	7
SECTION B: DISTRICT PROFILE	9
1 General Information	11
1.1 Population of the District.....	11
1.2 Occupations	12
1.3 Property	14
2 Infrastructure and Economy.....	16
2.1 Roads in meters over 3 years.....	16
2.2 Sewerage Pipes in meters over 3 years.....	16
2.3 Drainage and Bridges	16
2.4 Services in the District	16
2.5 Agriculture.....	17
3 Social Aspects	28
3.1 Education	28
3.2 Health.....	34
3.3 Water and Sanitation	36
3.4 Vulnerable groups.....	40
3.5 Migration	42
4 Natural Resources and Environment (NRE).....	44
4.1 Families involved with NRE issues over 3 years	44
4.2 Percentage of Families involved with Natural Resource issues, by Commune, for 2008	44
4.3 Percentage Houses with access to Garbage collection and Families affected by environmental Pollution, by Commune, for 2008	44
4.4 Percentage Families using chemical Fertilizer and chemical Pesticides, by Commune, for 2008 ..	45
5 Administration and Security	46

5.1	Birth Registration across 3 years.....	46
5.2	Number of unregistered Infants born in 2008, by Commune	46
5.3	Registered criminal Cases over 3 years	46
5.4	Registered criminal Cases per 10,000 people, by Commune, for 2008.....	46
5.5	Number of registered Land Disputes, by Commune, in 2008	46
6	Gender	47
6.1	Registered Domestic Violence over 3 years.....	47
6.2	Percentage of registered cases of Families experiencing domestic Violence, by Commune, in 2008	47
6.3	Women's involvement over 3 years.....	47
6.4	Percentage of Female Participants in Civil Society and of 18-60 year women with uncertain Jobs, by Commune, in 2008	48
6.5	Female-headed Households over 3 years.....	48
6.6	Percentage female-headed Households and with Children of less than 5 years old, by Commune, in 2008	48
7	Indigenous People in the District	49
7.1	Ethnic Minorities in the District over 3 years.....	49
7.2	Other Minorities in the District over 3 years.....	49
	SECTION C: PLANS AND PROJECTS	51
8	Priorities and Plans	53
8.1	Priorities of Commune Councils for 2009 in the District by Sector	53
8.2	Temporary Agreements by Commune, for 2009	59
8.3	Outputs, estimated and actual costs of C/S Fund Projects between 2005 and 2008, by Commune	69
8.4	Total Expenditure on C/S Fund Projects by sector and commune between 2005 and 2008.....	70
8.5	Actual 2009 C/S Fund projects by Commune	70
9	District level Projects from 2006 to 2009	71
9.1	District Initiative Infrastructure Projects from 2006 to 2009	71
9.2	District Initiative Service Projects from 2006 to 2009	72
9.3	Inter Commune Council Projects in 2008 and 2009	73
9.4	Other Projects in 2008 and 2009	74
	SECTION D: SERVICES AND ORGANIZATIONS	75
10	Infrastructure.....	77
10.1	Length of and Expenditure on Roads in 2008, by District	77
10.2	Scale of and Expenditure on Irrigation in 2008, by District.....	77
10.3	Power Supply in 2008, by District	77
11	Health Facilities.....	78

11.1 Health Facilities in the Province, by Operational District.....	78
11.2 Health Facilities and Staff in the province, by Operational District.....	78
11.3 Deliveries in 2007 in the Province, by Operational District.....	79
12 Education	80
12.1 Schools, Classes, Students, Staff, for for all levels, for 2007/2008 by District.....	80
12.2 Characteristics of Schools and School Principals for 2007/2008 by Commune	80
12.3 Enrolment by Level of Education, 2006/2007 by Commune	81
12.4 Enrolment by Level of Education, 2007/2008 by Commune	81
12.5 Aspects of Enrolment for 2007/2008 by Commune.....	81
12.6 School Buildings for all schools in the District for 2007/2008, by Commune	82
12.7 Conditions of Classrooms and Existence of Separate School Office and Library, by Commune	82
12.8 Community Participation and Financing across all schools in the District for 2007/2008 by Commune	82
12.9 Percentage Student Flow Rates and Graduation by level 2006/2007, by Commune	83
13 Staff and Resources at the District	84
13.1 District Councilors elected in 2009	84
13.2 Committees of the Council.....	84
13.3 Board of Governors.....	85
13.4 Offices under Sala Krong, Sala Srok and Sala Khan	85
13.5 Municipality/District/Khan line offices.....	85
13.6 Properties and Equipment of District Administration	85
13.7 Registered Revenue of the District Administration in 2008	86
13.8 Services in the District	87
13.9 Civil Society Organizations active in the District.....	87
13.10 Private Sector Organizations.....	88
SECTION E: POVERTY DATA	89
14 Data on Poverty	91
14.1 Predicted Poverty Rates for 2009, by commune	91
14.2 Poverty data from survey.....	91

List of Abbreviations

#	Number
AGR	Agriculture
BR	Birth Registration
C. Pilot	Piloted Commune
C/S	Commune / Sangkat
CBO	Community-Based Organization
CDB	Commune Database
CDPD	Commune Development and Planning Database
CIP	Commune Investment plan
CLTS	Community Led-Total Sanitation
Comm.	Commune
Com Cov	Commune Covered
CPA	Complementary Package of Activities
CPS	Community Preschool
CCWC	Commune Committees for Women and Children
DANIDA	Danish International Development Agency
DDLG	Democratic Development and Local Governance Project (EC-UNDP)
DFID	Department For International Development (UK)
DIP	District Initiative Project
DIS	District Information System
District PDRD	District Office of Rural Development
District WP	District Work Plan
DIW	District Integration Workshop
DoLA	Department of Local Administration
Dr	Doctor
DWRM	District Office of Water Resource and Meterology
ECD	Early Childhood education (part of PE)
EMIS	Education Management Information System
Event IC	Celebration of International Days
FDH	Former District Hospital
GTZ	German Society for Technical Cooperation (Gesellschaft für Technische Zusammenarbeit GmbH)
Ha	Hectare
HC	Health Center
HC (NB)	Health Center (no building)
HH	Headed Household
HSI	Intervention for Health
HP	Health Post
HW	Hand Washing
ICC	Inter Commune Council
IFAD	International Fund for Agricultural Development
IND	Industry
Inter-commune	Inter-Commune Project Management Committee or Inter-commune project
IO	International Organization
LASED	Land Allocation for Socio-Economic Development
LGCR	Local Governance for Children's Rights
M&E	Monitoring and Evaluation
MA	Medical Assistant
MoEYS	Ministry of Education, Youth and Sports
MoH	Ministry of Health

MoP	Ministry of Planning
MPA	Minimum Package of Activities
MW1	Primary Midwives
MW2	Secondary Midwives
n/a	Not available
NCD	National Contracts Database
NCDD	National Committee for Sub-National Democratic Development
NGO	Non-Governmental Organization
NRML	Natural Resources Management and Livelihood
NU1	Primary Nurse
NU2	Secondary Nurse
OD	Operational District
ODF	Open Defecation Free
Ope. Costs	Operational Costs
Others	Other Staff
PBW	Public Works
PDoEYS	Provincial Department of Education, Youth and Sport
PDRD	Provincial Department of Rural Development
PDWRM	Provincial Department of Water Resource and Meteorology
PE	Parenting Education
PHAST	Participatory Hygiene and Sanitation Transformation
PHD	Provincial Health Department
PID	Project Information Database
PMC	Project Management Committee
Pop 04-05	Population Covered 2004 or 2005
PSDD	Project to Support Democratic Development through Decentralization and Deconcentration
RRD	Rural Road Development
RH	Referral Hospital
RILGP	Rural Investment and Local Governance Project
RPRP	Rural Poverty Reduction Program
RuLIP	Rural Livelihoods Improvement Program
SIDA	Swedish International Development Cooperation Agency
SPPA	Senior Provincial Program Advisor
TBA	Traditional Birth Attendant
UNDP	United Nations Development Project
UNICEF	United Nations Children's Fund
Vil	Village
Vil Cov	Village Covered
VIL-HC	Distance from Village to Health Center
WASH	Water, Sanitation and Hygiene
WRM	Water Resource and Meteorology

Glossary

C/S Fund: The Commune/Sangkat Fund is established and managed by the Government of Cambodia to provide financial support for development projects and administrative costs of Commune/Sangkat Councils. The amount is determined as a percentage of the National Budget (for 2009: 2.8% over the 2008 budget) and is expected to increase gradually over the years. The total 2009 budget under this fund is \$ 27,643,902 (of which \$ 19,272,170 is for Development Projects and \$ 8,371,731 for Administration). Under the Rural Investment and Local Governance Project the World Bank currently reimburses the costs of development projects if these meet the Bank's criteria.

CDB: the Commune Data Base is a national database, compiled by the Ministry of Planning, on the basis of detailed questionnaires, completed at village and commune level, which are then sent to the Departments of Planning for data entry. The most recent round of data collection took place at the end of 2008 (and is reflected in the District Data Books). Commune, District and Provincial Profiles can be generated from this database and should be available from provincial Departments of Planning.

CDPD: the Commune Development and Planning Database is a database maintained by Departments of Planning and Ministry of Planning, recording proposed activities as determined and prioritized by Commune and Sangkat Councils; the Temporary Agreements between these councils and supporting agencies, as decided at District Integration Workshops and details on projects that actually take place at commune, district and provincial levels.

CIP: The Commune Investment Plan is a rolling three-year plan, developed and decided by the Commune or Sangkat Council. It sets priorities and identifies the projects proposed for the years to come.

Commune and Sangkat (C/S): the Communes (in rural areas) and Sangkats (in urban areas) are the lowest and smallest units of local government. Councils are elected directly, once in five years, for the 1417 Communes and 204 Sangkats. In the C/S there are 14,119 villages, which have Village Chiefs, but don't constitute a formal level of local government.

DIP: the District Initiative Project is jointly supported by the MDLF (Multi-Donor Livelihood Facility (supporting the NRM&L Program)) and PSDD. In 2009 it covers 106 districts, 60% of the total in the country, with a budget of \$ 3.2 million. It is focused on capacity development in planning, democratic development, public competitive procurement, financial management and service delivery.

DIS: The District Information System is a national database maintained by NCDD, recording resources, staff, revenue, infrastructure and equipment available in the 193 Districts and Khans throughout the country. The last update took place in July 2009.

District, Municipality and Khan constitutes the third level of Government in Cambodia. There are 159 rural Districts, 26 Municipalities and 8 Khans of Phnom Penh Capital. They all have Councils which were, for the first time, elected in May 2009, by the Commune/Sangkat Councilors. These councils have a mandate for 5 years.

DIW: District Integration Workshops are held between July and October, to bring Commune/Sangkat Councils, looking for support for their projects, together with the governmental and non-governmental agencies that may provide support.

ICC: Inter Communes Council projects are executed in 10 provinces under the Democratic and Decentralized Local Governance Project (DDLG). This five year project (2006-2010) is executed by Ministry of Interior and funded by the European Commission and UNDP. The project focuses on improving dialogue partnership and accountability; create a network of Commune Councils at the provincial and national level and support and contribute to local area development for poverty reduction. The work under the ICC component supports investments and services formulated through inter-commune dialogue and planning.

MEDiCAM: A non-profit and non-partisan membership organization for NGOs active in Cambodia's health sector. It is the primary networking agency for health-related NGOs.

NCDD: the National Committee for sub-National Democratic Development is the inter-ministerial body charged with the implementation of the Organic Law (a key legislative document, adopted in 2008, outlining the envisaged decentralization). NCDD also channels substantial financial assistance by a number of Development Partners, to projects and programs at various levels. This amounted to over \$ 91 million in 2008. More information at: www.ncdd.gov.kh. This website also provides access to reports, manuals, legal documents, details on projects and more.

OD: the Operational Districts are the districts as defined and used by the Ministry of Health. These do not coincide with the 193 (Administrative) Districts and Khans, as used by all other RGC agencies. The Operational Districts are usually larger, and so there are 77 Operational Districts against 193 administrative Districts and Khans. However they do fit within the boundaries of administrative provinces.

PID: The Project Information Database is the database maintained by NCDD at national and sub national level, to follow all aspects of projects by Commune and Sangkat Councils, including the C/S Fund projects

Provincial Investment Fund (PIF)

The Provincial Investment Fund is allocated to all Provinces and Municipalities according to a population based formula. Part of the fund is earmarked for support to planning activities of the Provincial / Municipal Department of Planning; and to gender mainstreaming activities of the Provincial Department of Women's Affairs. The remaining "un-earmarked PIF" is allocated by PRDC to sectoral technical departments against established criteria and in response to proposals with prioritisation taking into account: priorities formulated by the CS Councils and aggregated by District into District Priority Activities Matrices (DPAM); alignment with national planning and poverty alleviation criteria, complementarity with other planned activities; and performance of the Department concerned in implementation of activities in previous years. With this provisional allocation, the Department then programs activities through the District Integration Process. Finally, the agreed activities, plus support costs amounting to no more than 25% of the total, are included in a sub-contract signed between PRDC and the Department, pursuant to the overall PSDD contract signed between NCDD and PRDC. Total budget has been around \$ 2 million per year.

Province: the 23 Provinces and Phnom Penh Capital City represent the 2nd layer of government. They vary in size, from very small, like Kep (approx. 36,000 people) and Pailin (approx. 70,000 people), or large but with small populations, like Mondulkiri (over 60,000 people), and Ratanakiri (over 153,000) to densely populated and large, like Kampong Cham (over 1.7 million people) and Kandal (approx. 1.4 Million people).

PSDD: the Project to Support Democratic Development through Decentralization and Deconcentration is funded by DFID (UK), SIDA (Sweden) and UNDP and runs from 2006 till the end of 2010 (including a one year extension). Annual budgets range from \$ 11 million to over \$ 18 million. The project provides core technical support to NCDD and to the provinces, financial support to the C/S Fund, District Initiative, Provincial Investment Fund and capacity building support through training, studies and advisory services.

RILGP: The Rural Investment and Local Governance Project is a World Bank funded project that provides substantial support to C/S Fund projects and to developing the required infrastructure, policies, systems and skills. It started in 2003 with a Loan for \$ 22 million for 2003-2007 and was then extended with a Grant of \$ 36 million for the period of 2007-2010. Discussions about a possible RILGP 2 are taking place between RGC and the World Bank.

RPRP: the Rural Poverty Reduction Project is a seven year project from 2004 till 2010, funded by IFAD and UNDP and implemented through the Ministry of Agriculture, Forestry and Fishery, supported by the Ministry of Interior and facilitated by NCDD. The project is active in the provinces Prey Veng and Svay Rieng and focuses on 120,600 households below poverty line. The objective is poverty reduction with the active participation of the poor through improved livelihoods, Strengthened capacity, Sustainable farming systems and natural resource management, new and/or rehabilitated infrastructure development, increase accessibly to technology, services and markets for their economic and social development.

RULIP: the Rural Livelihoods Improvement Project is implemented by the Ministry of Agriculture Forestry and Fisheries (MAFF)' Project Support Unit- PSU, with the NCDD playing the role of cooperating agency. Funded by IFAD and UNDP, the project will run till 2014. The target group consists of poor households who have little or even no land, few livestock or other assets and often many dependents. The main goal of the project is to directly or indirectly improve the livelihood systems, food security and incomes of a total of 33,900 rural poor, ethnic minority and female headed households in targeted village of Kratie, Preah Vihear and Ratanakiri provinces in a sustainable manner.

Seth Koma: The UNICEF funded Seth Koma program focuses on measurable action for children and women. During 2006 -2010 it is implemented in six provinces. Government and UNICEF pursue a set of inter-related goals, addressing critical stages of the life cycle of the child: a) Mothers have safe pregnancies and deliveries and healthy newborns; b) best possible start in life of infant; c) Children enter schools at the right age of six years; d) Children are protected from exploitation, abuse, violence, discrimination and other risks; and e) Youth and adolescents acquire life skills, express their views, participate in the decisions.

Preface

The Government of Cambodia attaches great importance to optimal use of scarce resources and to participatory planning and management at all levels. The Organic Law which was adopted in 2008 provides the legal context for further steps towards improving and decentralizing planning, management and monitoring, and towards greater accountability and transparency of institutions at sub-national levels.

The Government has established elected Councils at the sub-national levels, and we will progressively give them the responsibilities, together with the human and financial resources, to deliver a wide range of public services. They will be more democratic, more efficient, more transparent and accountable, better at addressing gender and other inequalities, and at fighting corruption. We recognize that development does not come from government alone; it needs the involvement of citizens, civil society and the private sector, and the new system will facilitate this.

A central element in this process is the availability of information on any aspect of development to all concerned parties. The newly elected Councillors at District and Khan level, line departments operating at these levels, but also NGOs, Development Partners, Commune Councillors and citizens throughout Cambodia need information on problems and requirements, resources and opportunities, services and agencies, plans and projects. They will need such information to better understand the present situation, set targets for the future, monitor progress, know what others are doing and to apply resources wisely and this is the reason the District Data books will be so valuable.

The District Data Books are a major step towards full transparency and towards informed planning and decision-making. They provide all available data at District, Khan, Commune and Sangkat level in easily accessible formats, in Khmer and English, through over 16,000 printed copies, CD-ROMs and the NCDD website.

This is the first time in Cambodia (and possibly in South East Asia) that such detailed information is made so widely available and NCDD should be commended for the hard work that has gone into this. We also thank the Ministry of Planning, which provided the detailed data of the Commune Data Base, the sectoral ministries and provincial authorities who contributed data and the Development Partners who provided financial support.

It is our sincere hope that the publication of the District Data Books will strengthen capacities, especially at district levels, for evidence-based development planning. We also hope that this information will deepen the understanding among Ministries, Provincial Authorities, Development Partners, NGOs and research agencies of the realities at commune and district levels.

We call upon all to use and distribute this information, complement or correct where appropriate and to contribute new data in the years to come.

Sar KHENG

Deputy Prime Minister, Minister of Interior and Chairman of NCDD

Introduction

Purpose

The purpose of the District Data Books is to bring together information on any aspect of life and development of Districts, Khans, Communes and Sangkat, together and make this widely available. The primary targets are the newly elected District Councilors, district level line departments, provincial agencies, Development Partners and NGOs operating at this level. They need detailed knowledge on current living conditions, natural resources, infrastructure, agriculture and other economic activities, current service levels, past and planned projects and available resources.

While much information exists on many of the above aspects, it is often hard to access that information and much is lost to reports, databases and statistics that are not widely shared. Data are often only available in one language and often out-of-date, and many reports cover only one sector or region.

We found that these problems are especially acute at the district level. Now that Districts are becoming a much more significant level of local government and development planning, there is an urgent need for wide-ranging data to be used for setting base-lines, planning and prioritizing, monitoring and learning.

Approach

We have attempted to identify and compile all available statistics, reports, maps and other data at district and/or commune level. From this we have selected information that is available for all or most districts, reasonably reliable and up-to-date, sufficiently detailed and of possible interest to development planners, decision makers, agencies and citizens.

The major sources of the information in these District Data Books are:

- a) The Commune Data Base information over the years 2006 to 2009 (the most recent data were collected late last 2008), as compiled by the Ministry of Planning
- b) Detailed information directly collected from the Ministry of Health, the Ministry of Education, Youth and Sports and (for maps) the Ministry of Land Management, Urban Planning and Construction
- c) The Project Information Database (PID) at NCDD (up-to-date)
- d) The Commune Development and Planning Database (CDPD) (up to date)
- e) The District Information System (DIS) (updated per Mid 2009)
- f) Direct data collection at provincial and district level on private sector, irrigation, roads, and electricity, through provincial agencies
- g) Medical data collected from MEDiCAM
- h) The ID Poor Project – for poverty data on a number of provinces and districts
- i) NCDD's work on predictive poverty rates
- j) Specific projects for outputs, plans and budgets (Seth Koma, RILGP, RPRP and ICC)

Limitations of the data

We are fully aware that the data we collected are not always complete, consistent or correct. While we have rejected information that was wrong or very incomplete, we decided not to aim for statistical and scientific perfection, but to include information that is useful, relevant

and comprehensive. We also accepted different sources for the same data as this may encourage discussion on the quality of the respective data.

We strongly encourage anyone who notes errors or incompleteness in these data to contact us and to share their data. We hope that the next round of producing such District Data Books can draw on wider sources and more complete data.

We encourage the District Administrations, who receive these data also in digital format, not only to use these for their planning and monitoring, but also to start correcting and updating these data and to share new data with NCDD for future use.

Contents

The information in the following pages is organized in five sections:

- a) **Geographical data:** this section provides maps on infrastructure and administration and on land use and natural resources management. These maps are also provided in large format to all Districts and Khans.
- b) **District Profile:** this presents wide ranging data, covering 2006 – 2009, at district and commune level, extracted from the Commune Data Base, but edited for better understanding.
- c) **Plans and Projects:** this section presents development priorities determined by Commune and Sangkat Councils, Temporary Agreements, outputs and expenditure of major projects at Commune and District level over 2006 – 2008 and plans and budgets for 2009.
- d) **Services and Organizations:** this section provides details on key infrastructure (roads, electricity, irrigation systems) and services in health and education at district and commune level. It also provides an inventory of resources at the District Administration, NGOs operating in the district and private sector agencies active in the district.
- e) **Poverty Data:** this section provides predicted poverty rates for 2009 for all districts and communes and detailed poverty data compiled and processed by the ID Poor project for those that have been covered by this project.

The future

It is our hope that this is the start of a longer-term process. We hope that a next edition of these District Data Books will offer more comprehensive, correct and up-to-date information. We hope that the District Administrations will not only start using this information, but also improve and update it. For this they are all provided with the full data set in digital format.

We invite agencies, projects and experts to send reports, statistics and maps that could be used for a next version to us and we invite all users of the District Data Books to inform us about errors, updates and inconsistencies. Please contact us through info@ncdd.gov.kh

We now invite you to browse through this data book. You may open this randomly or use the table of contents and go to the aspects that have your special interest.

We hope that you will be informed, surprised and assisted. We hope, above all, that this information will lead to a deeper understanding of causes and effects of poverty, to purposeful decisions on how to tackle those causes and to greater transparency in using scarce resources for the benefit of all.

Martin de Graaf
Program Advisor, PSDD/NCD

SECTION A: GEOGRAPHY

1 Administration and Infrastructure

Please see separate folder containing A3 maps.

2 Land Use and Natural Resources

Please see separate folder containing A3 maps.

3 Geography

3.1 Land Area

Total Land Area (ha)	Forest Land Area (ha)		Cultivation Land Area (ha)	Construction Land Area (ha)	Other Land Area (ha)
	Total	Flooded Forest Area			
261100	171558	0	13706	484	75352

3.2 Distances between Offices

Location	Distance (Km)
From District Office to C/S Office of Khsum	13
From District Office to C/S Office of Pir Thnu	4
From District Office to C/S Office of Snuol	2.2
From District Office to C/S Office of Srae Char	5
From District Office to C/S Office of Svay Chreah	40

SECTION B: DISTRICT PROFILE¹

¹ All data in this section come from the Commune Database (CDB) unless otherwise specified. These include primarily new CDB data, collected late 2008, and some data from earlier years. Please note that percentages are rounded to the nearest whole number.

1 General Information

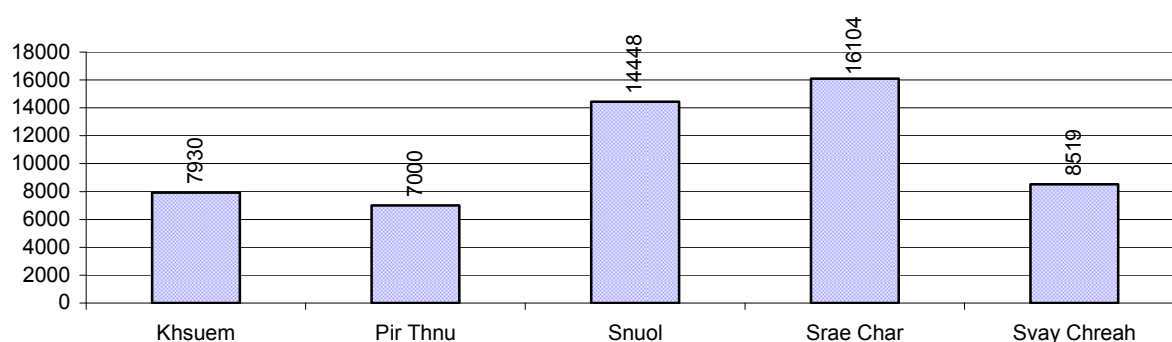
1.1 Population of the District

1.1.1 Total Population

Number of families	2005	2006	2007	2008
Total number of families	8,468 families	9,055 families	10,003 families	11,016 families
Increase (+)/Decrease (-) in nr of families		7%	10%	10%
Total population	42,319 pers	44,508 pers	48,565 pers	54,001 pers
Increase (+)/Decrease (-) in nr of people		5%	9%	11%
Number of female Headed Households (HH)	945 families	980 families	928 families	1,017 families

Note: Percentages of population and increase/decrease are calculated on basis of the previous year. A negative sign in front of the percentage indicates a decrease in population.

1.1.2 Population, by Commune, in 2008



1.1.3 Population, by Age Group, over 3 years

Population by age group	2006	2007	2008	
	%	%	%	Number
Age 0-5 years (as percentage of the population)	14%	16%	16%	8,792 persons
Male 0-5 yrs	50%	49%	51%	4,505 persons
Female 0-5 yrs	50%	51%	49%	4,287 persons
Age 6-17 (as percentage of the population)	28%	33%	33%	18,030 persons
Male 6-17 yrs	51%	48%	52%	9,295 persons
Female 6-17 yrs	49%	52%	48%	8,735 persons
Age 18-60 (as percentage of the population)	51%	46%	45%	24,265 persons
Male 18-60 yrs	51%	49%	50%	12,238 persons
Female 18-60 yrs	49%	51%	50%	12,027 persons
Age 61 above (as percentage of the population)	7%	5%	5%	2,914 persons
Male 61	48%	49%	50%	1,443 persons
Female 61	52%	51%	50%	1,471 persons

Note: The overall percentage for each age group is calculated on the basis of the total population. The gender distribution of each group is calculated on the basis of the population within that particular age group.

1.2 Occupations

1.2.1 Percentage of families with a particular Occupation over 3 years

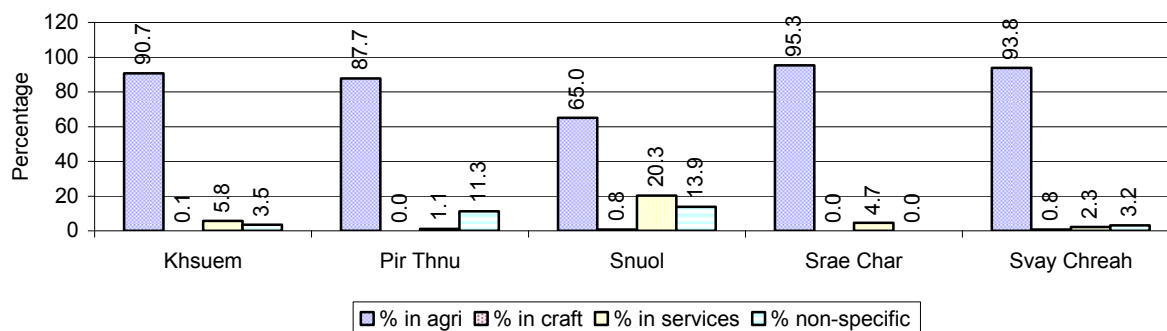
This table shows the percentage of the population who have a particular occupation (job), for example the percentage of the population in the district who are rice farmers, furniture crafter, trader, etc.

Description	2006	2007	2008	
	%	%	%	Number
Families whose main occupation is agriculture	85%	87%	85%	9,381 Families
Families whose primary occupation is rice farming	58%	50%	50%	5,546 Families
Families whose primary occupation is cultivating long-term crops	14%	16%	15%	1,652 Families
Families whose primary occupation is cultivating short-term crops	12%	19%	18%	2,018 Families
Families whose primary occupation is cultivating vegetable	1%	1%	1%	91 Families
Families whose primary occupation is fisherman	0%	0%	0%	2 Families
Families whose primary occupation is livestock farmer	0%	0%	0%	0 Families
Families whose primary occupation is NTFP collection	1%	1%	1%	72 Families
Families whose main occupation is craft work	0%	0%	0%	38 Families
Families, whose main occupation is in furniture craft, wooden, rattan, vine, bamboo	0%	0%	0%	26 Families
Families whose main occupation is in metal, aluminum, glass goods production	0%	0%	0%	2 Families
Families whose main occupation is food production	0%	0%	0%	0 Families
Families whose main occupation is tire, plastics and rubber goods production	0%	0%	0%	0 Families
Families whose main occupation is textile, clothing goods production	0%	0%	0%	1 Families
Families whose main occupation is in other production, not listed above	0%	0%	0%	9 Families
Families whose main occupation is services	8%	7%	8%	910 Families
Families whose main occupation is trade	5%	5%	6%	715 Families
Families whose main occupation is repair	1%	1%	1%	85 Families
Families whose main occupation is providing transport services	1%	1%	1%	79 Families
Families whose main occupation is providing other services	1%	0%	0%	31 Families
Families whose main occupation is not clear (or multi)	6%	6%	6%	687 Families

Note: The occupation percentages are calculated on the basis of the total number of families.

1.2.2 Percentage Families that work in one of four occupational sectors, by Commune in 2008

This table indicates the percentage of families involved in one of four occupation types: agriculture, craft, services or non-specific (other). Please note agriculture includes forestry activities such as cutting down trees and gathering gum from the trees.



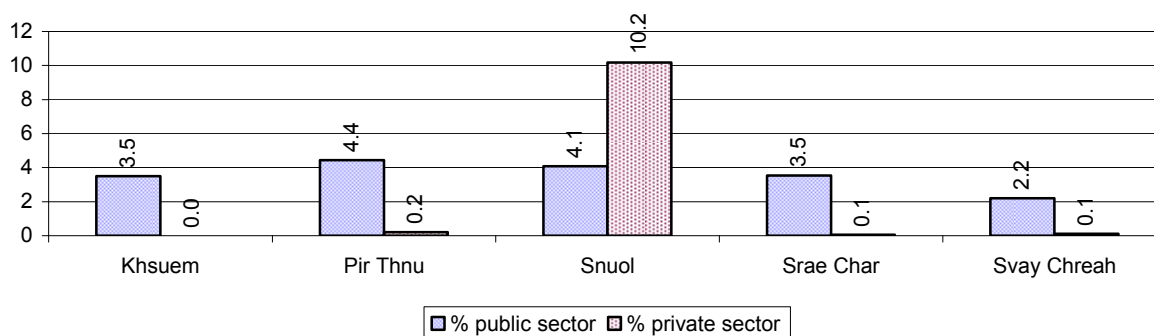
Note: Calculated on the basis of the total number of families within a commune.

1.2.3 Percentage of Families with public Sector, private Sector or uncertain Jobs, over 3 years

Description	2006	2007	2008	
	%	%	%	Number
Families that have a family member who is a government official, staff or worker	4%	4%	4%	396 families
Families that have a family member who is a private sector staff or worker	3%	4%	3%	313 families
Number of people aged 18-60 with uncertain/irregular jobs	0%	3%	0%	53 persons

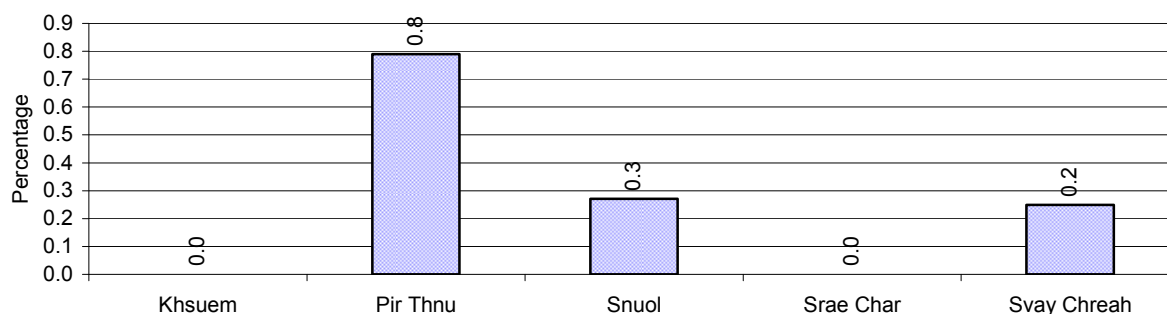
Note: In the first two rows percentages are calculated on the basis of the total number of families. In the third row the percentage is calculated on the basis of the total number of people aged 18-60 years.

1.2.4 Percentage of Families with public or private Sector Jobs, by Commune in 2008



Note: Calculated on the basis of the total number of families in the commune

1.2.5 Percentage of People aged 18-60 years with uncertain/irregular Jobs, by Commune, in 2008.



1.3 Property

1.3.1 Housing types and facilities over 3 years

This table shows the percentage of people living in a certain type of house. It also indicates how many houses have electricity or battery powered lights and how many have TV.

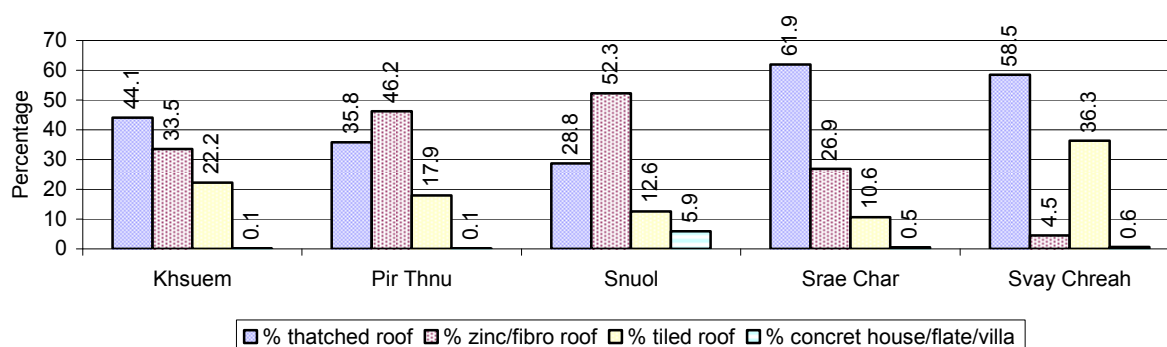
House Type	2006	2007	2008	
	%	%	%	Number
House with thatched roof	58 %	51 %	46 %	4,584 houses
House with zinc/fibro roof	26 %	29 %	34 %	3,387 houses
House with tiled roof	15 %	16 %	17 %	1,727 houses
Flats/apartments (with many families living)	2 %	2 %	2 %	149 houses
Concrete house or flat (with one family living)	0 %	0 %	1 %	53 houses
Villa house	0 %	1 %	0 %	6 houses
Houses with electricity	11 %	12 %	14 %	1,421 houses
Houses with battery light	50 %	53 %	70 %	6,980 houses
Houses with TV	24 %	31 %	34 %	3,357 houses

Note: Calculated against the total number of houses

1.3.2 Families living on public Land or without a permanent House

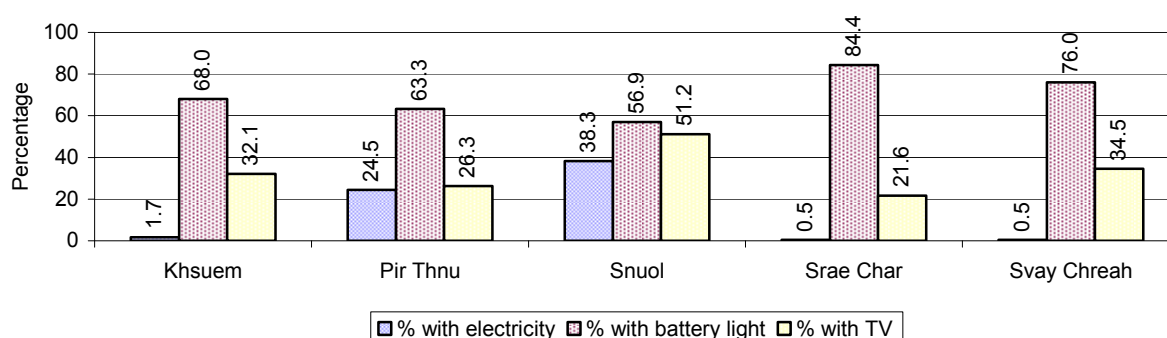
Living situation	2006	2007	2008
Families living in a house on public land	13 families	126 families	131 families
People, without permanent housing	25 person(s)	22 person(s)	19 person(s)

1.3.3 Percentage of Population living in a particular type of House, by Commune, in 2008



Note: Calculated against the total number of houses in each commune

1.3.4 Percentage of Houses with Electricity, Battery Lights and/or TVs, by Commune, in 2008



Note: Calculated against the total number of houses in each commune

1.3.5 Types of Vehicles and their ratio to Families across 3 years

This table shows the number of families per vehicle in the district. The last column shows the total number of each type of vehicle in the district for 2008.

Description	2006 ratio	2007 ratio	2008	
			Ratio	Number
Bicycle and bicycle with trailer	3	3	3	3,212
Ox-carts and horse-carts	4	4	4	2,950
Motorbike/with trailer	3	2	2	5,838
Motor tri-cycle	312	10,003	3,672	3
Large Transportation				
Total number of cars/trucks	37	32	29	375
Locally made vehicles	216	133	136	81
Trucks for goods transport	95	94	82	135
Buses/mini buses for passengers	1,294	2,001	1,377	8
Family cars	92	81	73	151
Agriculture machinery				
Tractors used for plowing	477	256	424	26
Power-tillage used for plowing	63	59	36	307
Other type of machinery				
Other type of machinery	159	270	51	218
Water transportation				
Row boats	79	67	106	104
Total number of motor boats				
Motor boats used for fishing	2,264	1,429	1,836	6
Motor boats used for passengers	9,055	3,334	2,754	4
Motor boats used for goods transporting	N/A	10,003	N/A	0
Motor boats used for goods transporting	3,018	3,334	5,508	2

Note: Ratio of families to a particular type of vehicle is the result of the total number of families divided by total number of that type of vehicle. Other types of vehicles, such as bulldozer, excavator, rollers etc. are not listed.

2 Infrastructure and Economy

2.1 Roads in meters over 3 years

Description	2006	2007	2008
Bituminous road	0 m	0 m	0 m
DBST, Macadam road	0 m	0 m	0 m
Concrete road	0 m	0 m	0 m
Laterite road	42,070 m	20,197 m	11,950 m
Constructed earth road	19,543 m	46,310 m	26,693 m
Un-constructed earth road	19,500 m	57,090 m	12,930 m

2.2 Sewerage Pipes in meters over 3 years

Description	Sewage pipe length		
	2006	2007	2008
Total length of sewage pipe, diameter 30-50 cm	15 m	0 m	0 m
Length of newly constructed sewage pipe, diameter 30-50 cm	0 m	0 m	0 m
Length of sewage pipe, diameter 30-50 cm needs repair/rehabilitation	0 m	0 m	0 m
Total length of sewage pipe, diameter of pipe 60-100 cm	47 m	0 m	0 m
Length of newly constructed sewage pipe, diameter 60-100 cm	0 m	0 m	0 m
Length of sewage pipe, diameter 60-100 cm needs repair/rehabilitation	0 m	0 m	0 m
Sewage pipe, diameter of pipe over 100 cm	0 m	0 m	0 m
Length of newly constructed sewage pipe, diameter over 100 cm	0 m	0 m	0 m
Length of sewage pipe, diameter over 100 cm needs repair/rehabilitation	0 m	0 m	0 m

2.3 Drainage and Bridges

Construction Type	2006		2007		2008	
	place(s)	Length	place(s)	Length	place(s)	Length
Single pipe culvert	72	313m	76	365 m	80	362 m
Double-pipe culvert	2	13m	5	17 m	9	52 m
Box pipe culvert	2	7m	2	7m	1	7 m
Wooden bridge	19	152m	11	115m	9	77 m
Concrete bridge	2	34m	1	7m	1	66 m
Bale bridge	10	212m	9	192m	9	102 m
Spillway construction	5	34m	4	34m	5	64 m

2.4 Services in the District

Descriptions	Number of places by year		
	2006	2007	2008
Public			
Electricity generating stations	2	2	2
Health clinics	2	7	0
Private			
Bicycle and motorcycle repair places	55	56	44
Agricultural machinery, tools and equipment repair places	6	7	6
Electronic tool repair places	6	6	8
Battery-charging services	30	31	43
Handicraft places, wooden furniture and forest by-products	31	32	32
Other handicraft places (excluding furniture)	12	10	9
Small-scale services (hairstylist, phone service, massage,	131	108	110

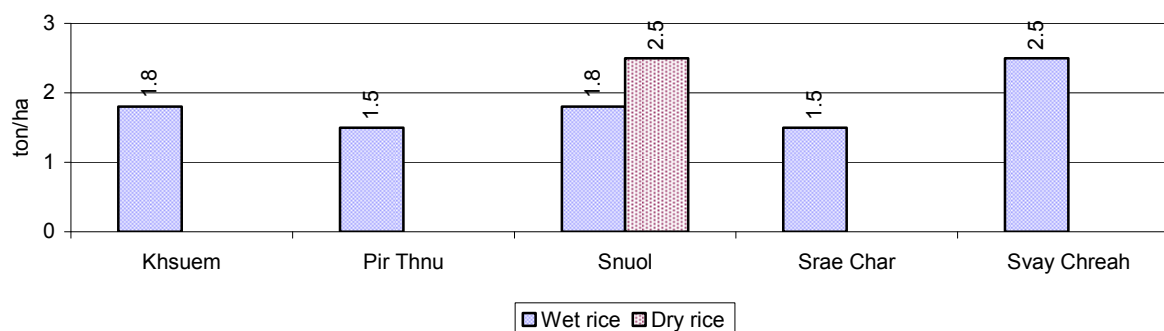
Descriptions	Number of places by year		
	2006	2007	2008
Karaoke, etc)			
Small-scale food shop businesses (Food, groceries, drink shop, etc)	282	407	372
Small-scale rice mills	280	172	279
Medium or large-scale rice mills	0	0	1
Small-scale markets	2	2	2
Large-scale market	1	1	1
Alcohol refinery places	50	56	90
Pharmacies and small drug stores	5	6	7
Hotels	0	0	1
Guest houses	6	6	6
Restaurants	3	4	3
Gasoline stations	0	0	0

2.5 Agriculture

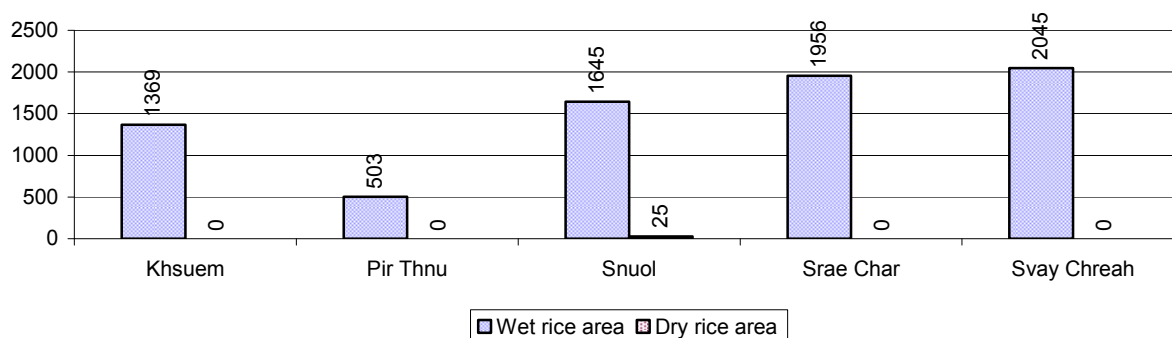
2.5.1 Rice cultivation in the District over 3 years

Description	2006	2007	2008
Total dry rice land area	53 ha	82 ha	184 ha
Actual dry rice cultivation area	0 ha	32 ha	25 ha
% actual cultivation to total land	0%	38%	14%
Total dry rice production	- tonne(s)	63 tonne(s)	63 tonne(s)
Average dry rice yield	- tonne(s)/ha	2.0 tonne(s)/ha	2.5 tonne(s)/ha
Total wet rice land area	5,270 ha	6,008 ha	7,639 ha
Actual wet rice cultivation area	4,877 ha	5,609 ha	7,518 ha
% actual cultivation to total land	93 %	93%	98%
Total wet rice production	7,120.42 tonne(s)	14,302.95 tonne(s)	13,682.76 tonne(s)
Average wet rice yield	1.5 tonne(s)/ha	2.6 tonne(s)/ha	1.8 tonne(s)/ha
Total intensive rice land area	5 ha	0 ha	0 ha
Actual intensive rice cultivation area	- ha	- ha	- ha
Average intensive rice yield	- tonne(s)/ha	- tonne(s)/ha	- tonne(s)/ha
Actual upland rice cultivation area	852 ha	138 ha	2,516 ha
Total upland rice production	1,039 tonne(s)	238 tonne(s)	4,193 tonne(s)
Average upland rice yield	1.2 tonne(s)/ha	1.7 tonne(s)/ha	1.7 tonne(s)/ha

2.5.2 Estimated wet and dry Season Rice Yield in tonne(s)/Ha, by Commune, in 2008



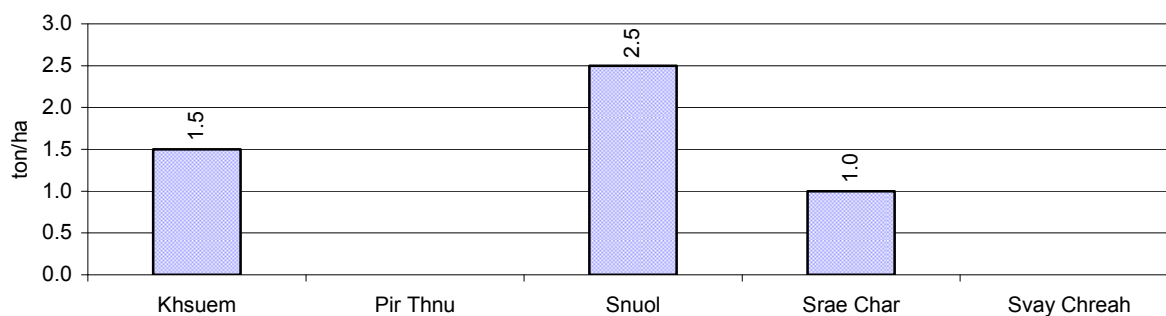
2.5.3 Cultivated wet and dry Season Rice areas in Ha, by Commune, in 2008



2.5.4 Estimated intensive Rice Yields in tonnes/Ha, by Commune, for 2008

There were no estimated intensive rice yields in this District in 2008

2.5.5 Estimated upland Rice Yield in tonnes/Ha, by Commune, for 2008

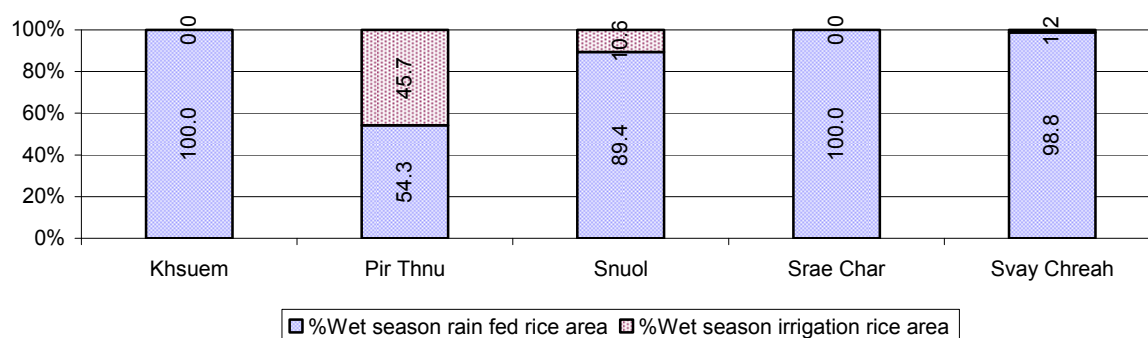


2.5.6 Wet season Rice irrigation across 3 years

Description		2006	2007	2008	
		%	%	%	Number
Total area of wet season rain fed rice land		88%	89%	94 %	7,089 ha
Percentage of wet season rice land that is irrigated; and for 2008 area in Ha		12 %	11 %	6 %	429 ha
Where	Area irrigated from canal/dam	97 %	69 %	95 %	409 ha
	Area irrigated from river, stream, lake, natural pond	3 %	29 %	5 %	20 ha
	Area irrigated from drilled well	0 %	2 %	0 %	0 ha
	Area irrigated from dug pond	0 %	0 %	0 %	0 ha

2.5.7 Water sources for wet Season Rice Cultivation, by Commune, in 2008

This chart shows the percentage of wet season rice cultivation receiving water from rain (natural) and from irrigation.



2.5.8 Access to Irrigation

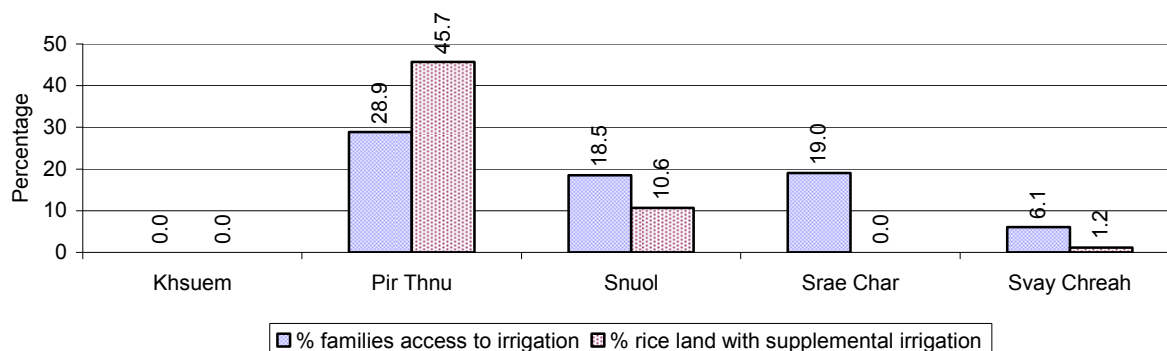
Description	2006 %	2007 %	2008	
			%	Number
Families who have access to irrigation water	14%	15%	13%	718 families
Families who have irrigation wells	0%	0%	0%	0 families

Note: Calculated against the total number of families are rice farmers

2.5.9 Number of Irrigation Wells over 3 years

Description	2006	2007	2008
Number of irrigation wells	20 wells	2 wells	0 wells

2.5.10 Percentage of Families with access to (supplemental) Irrigation for wet Season Rice cultivation, by Commune, in 2008



Note: % of families, with access to irrigation is calculated against the total number of families, whose main occupation is rice farming. Irrigated wet rice land area is calculated against the total actual wet rice land cultivated areas

2.5.11 Irrigation Wells, by Commune, in 2008

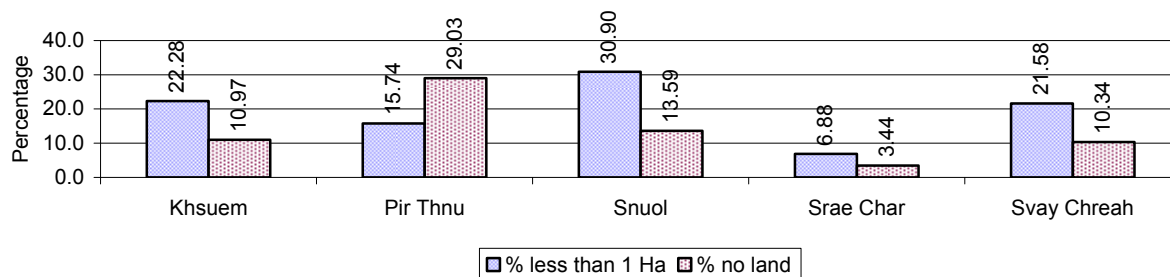
There are no irrigations wells in this District in 2008

2.5.12 Farmers owning less than one hectare of Rice Land

Description	2006 %	2007 %	2008	
			%	Number
Families who have less than one hectare of rice land	23%	21%	19%	1,075 families
Families who do not own any rice land	10%	11%	12%	675 families

Note: Calculated on basis of total number of families who are rice farming

2.5.13 Percentage of Farmers with less than one Hectare or no Rice Land, by Commune, in 2008

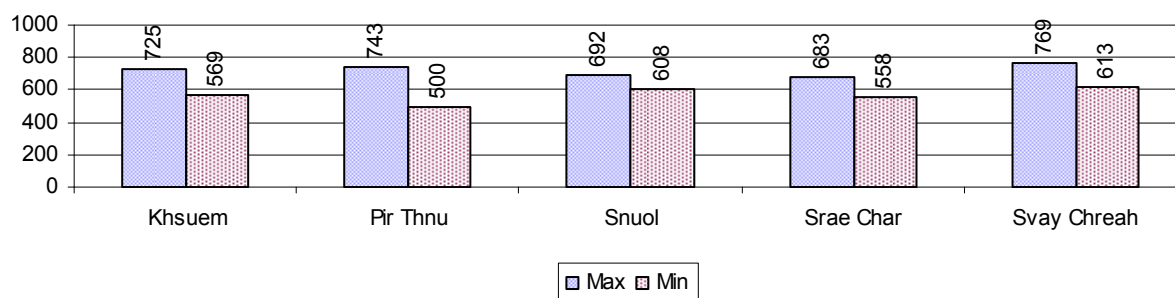


Note: Calculated on basis of total number of families who are rice farming

2.5.14 Average farm-gate Prices of Rice, over 3 years

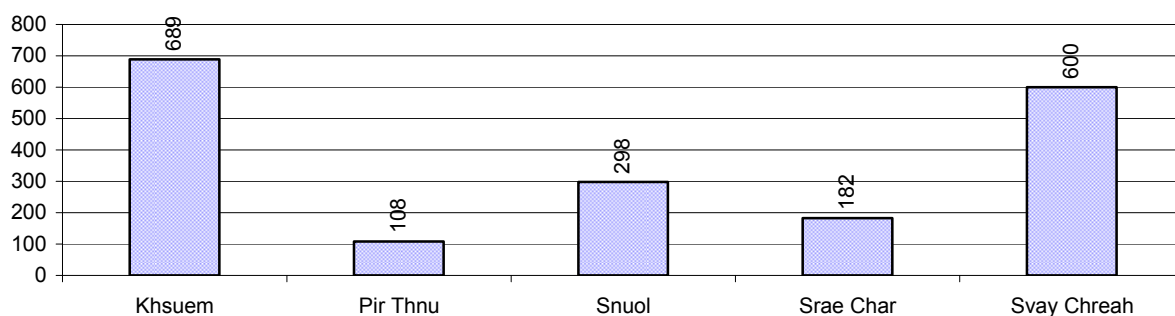
Description	2006	2007	2008
Maximum average farm gate price	520 Riels/Kg	753 Riels/Kg	722 Riels/Kg
Minimum average farm gate price	386 Riels/Kg	598 Riels/Kg	570 Riels/Kg
Average farm gate price	453 Riels/Kg	675 Riels/Kg	646 Riels/Kg
Average rice production per person	183 Kg/person	301 Kg/person	332 Kg/person

2.5.15 Minimum and maximum farm-gate Prices of Rice in Riel/kg, by Commune, in 2008



2.5.16 Production of Paddy in Kgs/Person, by Commune, in 2008

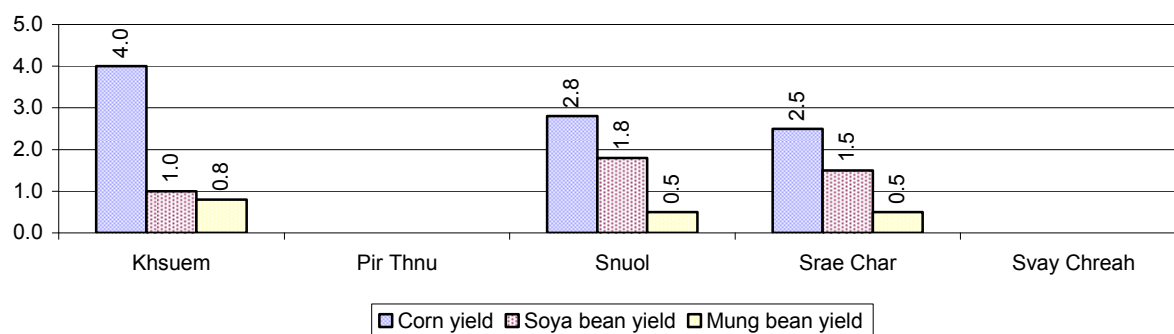
This table shows how much paddy (harvested rice) is produced in a year in a commune, in kgs per person.



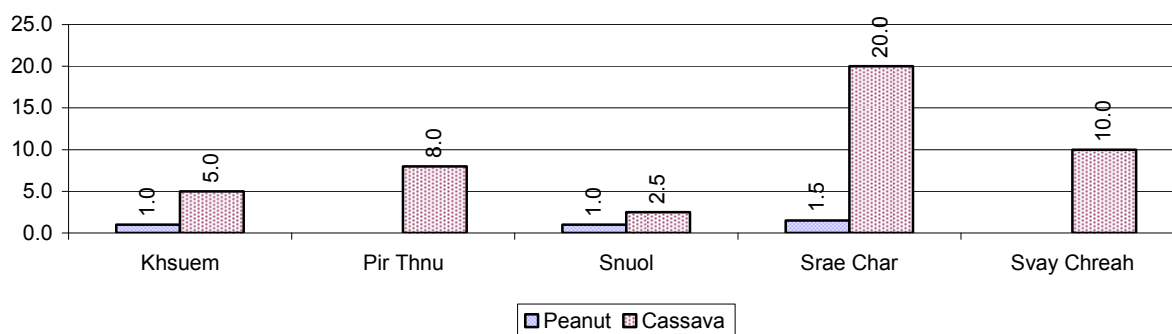
2.5.17 Production of other Crops, over 3 years

Crops	2006	2007	2008
Corn cultivation area	234 ha	28 ha	34 ha
Estimated corn yield	2.3 tonne(s)/ha	4.3 tonne(s)/ha	3.1 tonne(s)/ha
Estimated corn production	528 tonne(s)	121 tonne(s)	106 tonne(s)
Soya bean cultivation area	459 ha	1,180 ha	1,193 ha
Estimated Soya bean yield	2.1 tonne(s)/ha	2.0 tonne(s)/ha	1.4 tonne(s)/ha
Estimated Soya bean production	975 tonne(s)	2,360 tonne(s)	1,711 tonne(s)
Mungbean cultivation area	108 ha	29 ha	117 ha
Estimated Mungbean yield	1.2 tonne(s)/ha	1.2 tonne(s)/ha	0.6 tonne(s)/ha
Estimated Mungbean production	132 tonne(s)	34 tonne(s)	70 tonne(s)
Peanut cultivation area	68 ha	11 ha	37 ha
Estimated Peanut yield	1.3 tonne(s)/ha	1.0 tonne(s)/ha	1.2 tonne(s)/ha
Estimated Peanut production	88 tonne(s)	11 tonne(s)	43 tonne(s)
Cassava cultivation area	3,407 ha	4,917 ha	10,871 ha
Estimated Cassava yield	8.8 tonne(s)/ha	10.1 tonne(s)/ha	9.1 tonne(s)/ha
Estimated Cassava production	29,982 tonne(s)	49,662 tonne(s)	98,926 tonne(s)
Sweet potatoes cultivation area	17 ha	1 ha	0 ha
Estimated Sweet potatoes yield	1.0 tonne(s)/ha	1.0 tonne(s)/ha	- tonne(s)/ha
Estimated Sweet potatoes production	17 tonne(s)	1 tonne(s)	- tonne(s)
Sesame cultivation area	52 ha	0 ha	26 ha
Estimated Sesame yield	1.0 tonne(s)/ha	- tonne(s)/ha	0.5 tonne(s)/ha
Estimated Sesame production	49 tonne(s)	- tonne(s)	13 tonne(s)

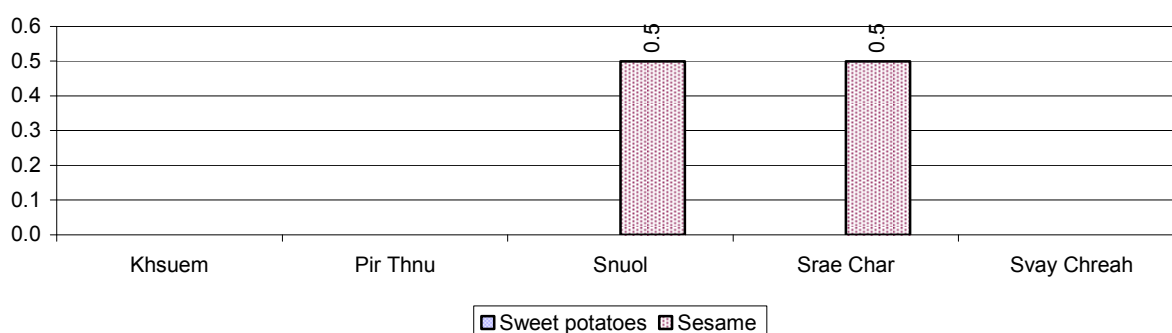
2.5.18 Yields of Corn, Soya beans and Mungbeans in tonne(s)/ha, by Commune, in 2008



2.5.19 Yields of Peanuts and Cassava in tonne(s)/ha by Commune, in 2008



2.5.20 Yields of Sweet Potatoes and Sesame in tonne(s)/ha, by Commune, in 2008



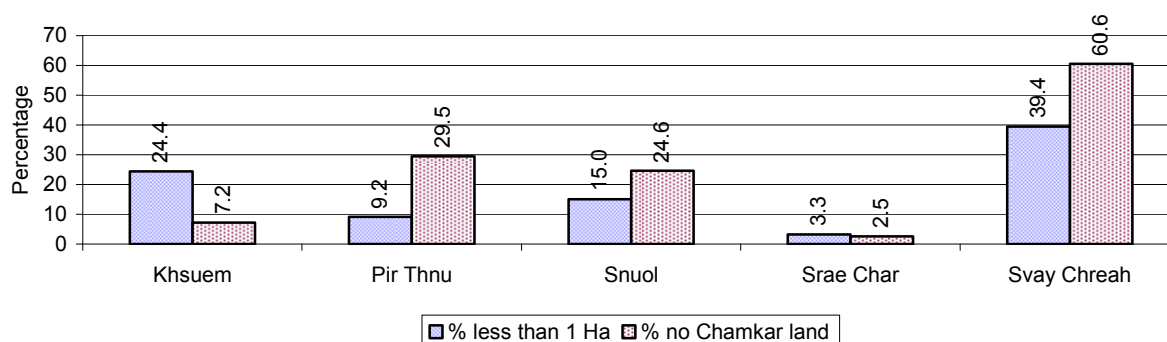
2.5.21 Percentage Farmers who own less than 1 Ha or no Chamkar land

Description	2006	2007	2008	
	%	%	%	Number
Families, who own less than 1ha of Chamkar land	23%	13%	10%	359 families
Families, with no Chamkar land	4%	9%	14%	527 families

Note 1: Calculated as a percentage of the total number of families whose main occupation is Chamkar (not rice) farming

Note 2: Chamkar land is no-rice land, i.e. other crops

2.5.22 Percentage Farmers owning less than 1 ha or no Chamkar land, by Commune, in 2008



Note: Percentage is calculated among families, who Chamkar farm as a main occupation, not the total population of the commune.

2.5.23 Percentage of Families raising Cattle/Buffalo, over 3 years

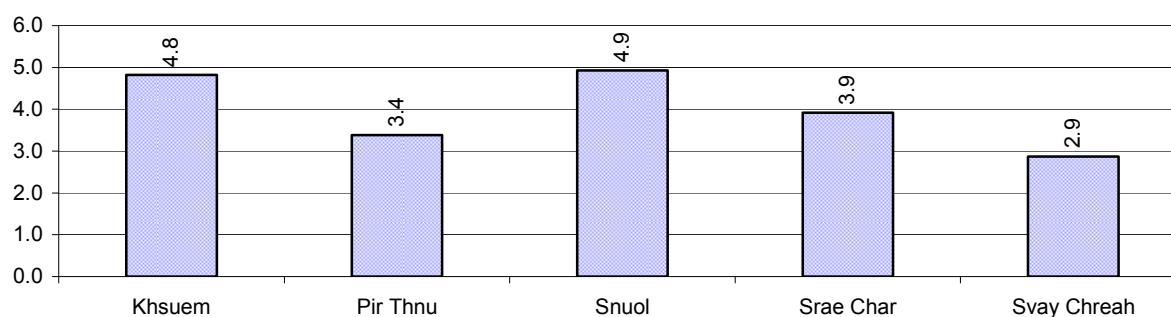
Description	2006 %	2007 %	2008	
			%	Number
Families raising cattle/buffalo	51%	46%	44%	4,821 families
Families raising cattle/buffalo as labor forces	43%	41%	40%	4,368 families

Note: Calculated against the total number of families.

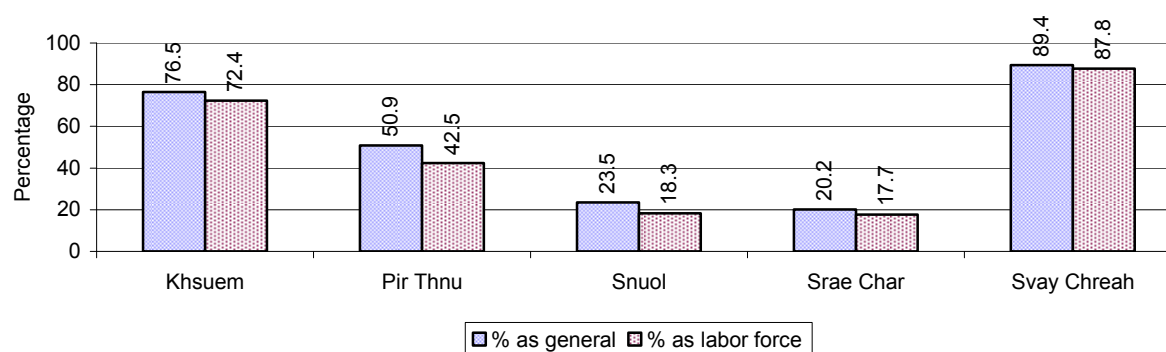
2.5.24 Number of Cattle/buffalo being raised, over 3 years

Description	2006	2007	2008
Total number of cattle/buffalo	18,060 head(s)	18,845 head(s)	18,757 head(s)
Average cattle/buffalo per families	3.9 head(s)/families	4.1 head(s)/families	4 head(s)/families

Note: Calculated by dividing total number of cattle/buffalo by total number of cattle/buffalo raising families

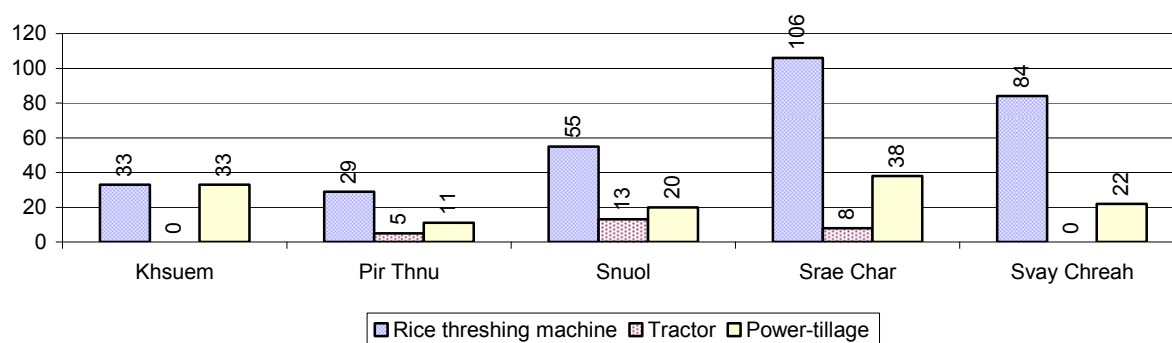
2.5.25 Average number of Cattle/Buffalo per Family, by Commune, in 2008

Note: Calculated by dividing total number of cattle/buffalo by total number of cattle/buffalo raising families

2.5.26 Percentage Families raising Cattle/Buffalo, for general and labor purposes in 2008, by Commune

Note: Calculated using the total number of families raising cattle/buffalo against the total number of families.

2.5.27 Type and number of agricultural Machines, by Commune, in 2008

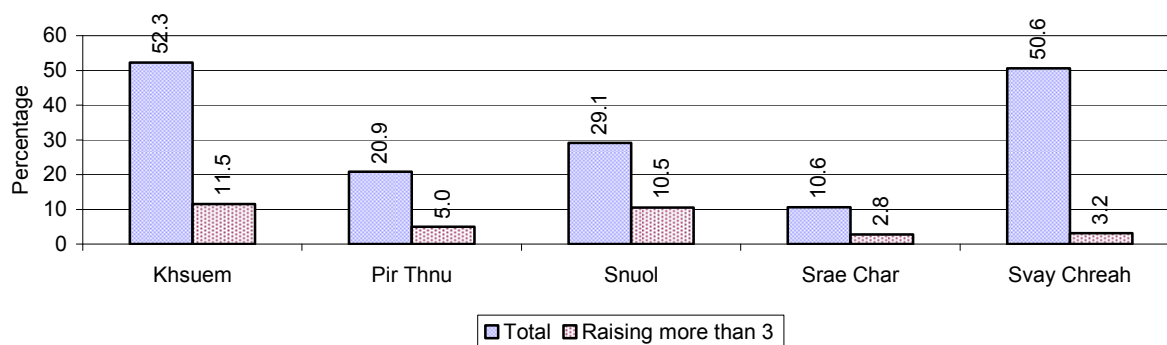


2.5.28 Livestock-producing Households over 3 years

Description	2006 %	2007 %	2008	
			%	Number
Total number of families raising pigs	34%	29%	29%	3,205 families
number of families raising more than 3 pigs	9%	8%	7%	717 families
Total number of families raising chickens	79%	69%	78%	8,643 families
number of families raising more than 3 chickens	63%	53%	65%	7,130 families
Total number of families raising ducks	9%	6%	6%	620 families
number of families raising more than 5 ducks	6%	4%	4%	400 families
Total number of families raising goats or sheep	0%	0%	0%	15 families
Total number of families raising horses	1%	1%	0%	48 families

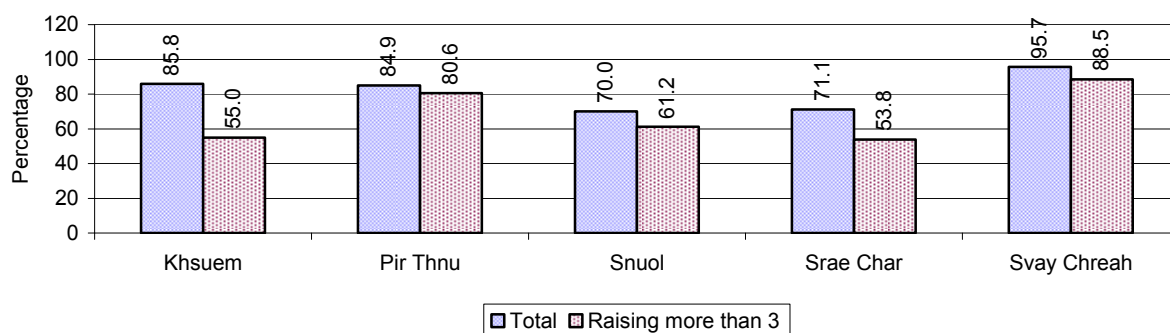
Note: Calculated against the total number of families

2.5.29 Percentage Families raising Pigs, by Commune, in 2008



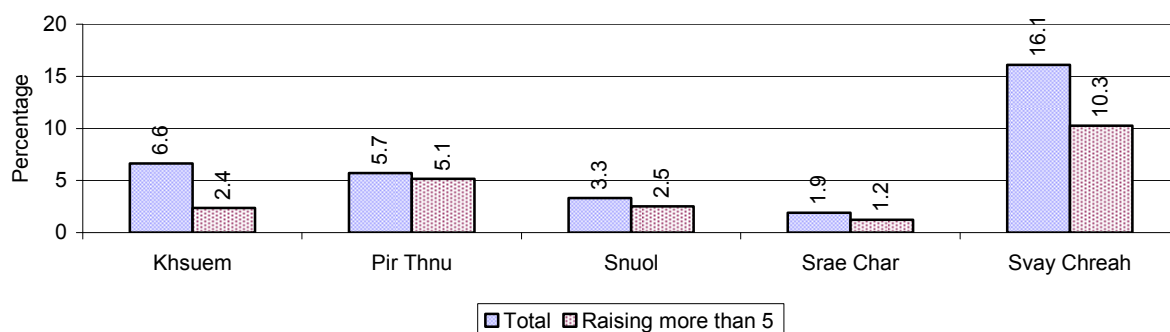
Note: Calculated against the total number of families in the commune

2.5.30 Percentage Families raising Chickens, by Commune, in 2008



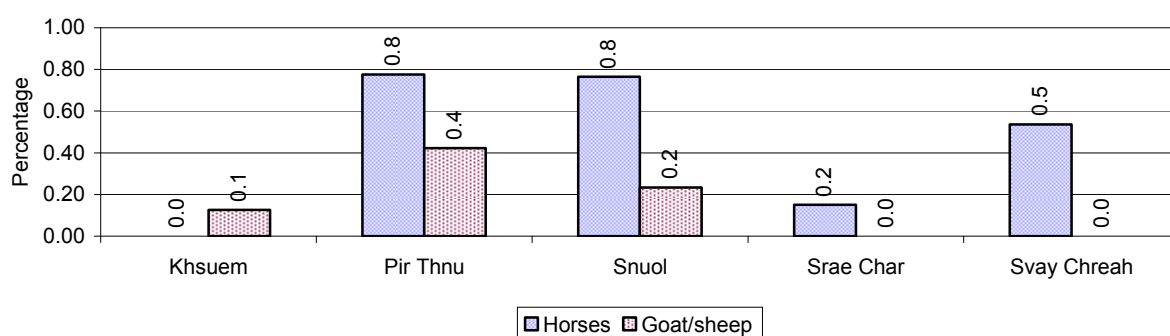
Note: Calculated against the total number of families in the commune

2.5.31 Percentage Families raising Ducks, by Commune, in 2008



Note: Calculated against the total number of families in the commune

2.5.32 Percentage Families raising Horses, Goats or Sheep, by Commune, in 2008

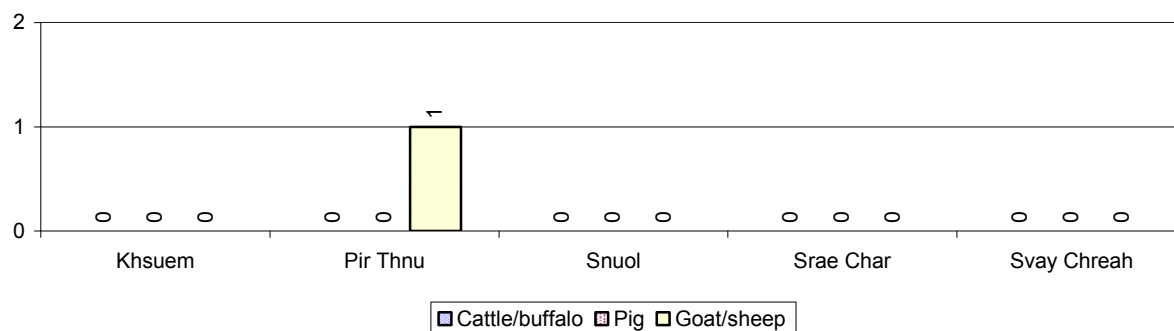


Note: Calculated against the total number of families in the commune

2.5.33 Livestock Farms over 3 years

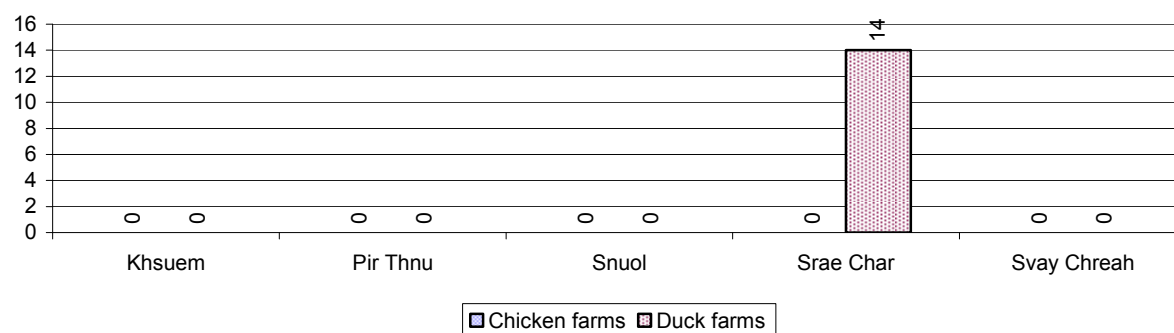
Description	2006	2007	2008
Number of cattle/buffalo farms	0 farm(s)	0 farm(s)	0 farm(s)
Number of pig farms	0 farm(s)	0 farm(s)	0 farm(s)
Number of goat/sheep farms	141 farm(s)	2 farm(s)	1 farm(s)
Number of chicken farms	30 farm(s)	3 farm(s)	0 farm(s)
Number of duck farms	0 farm(s)	0 farm(s)	14 farm(s)

2.5.34 Number Livestock Farms, by Commune in 2008



Note: Number of farms are recorded by the village chief, not by counting number of livestock in each farm

2.5.35 Number Chicken and Duck Farms, by Commune, for 2008



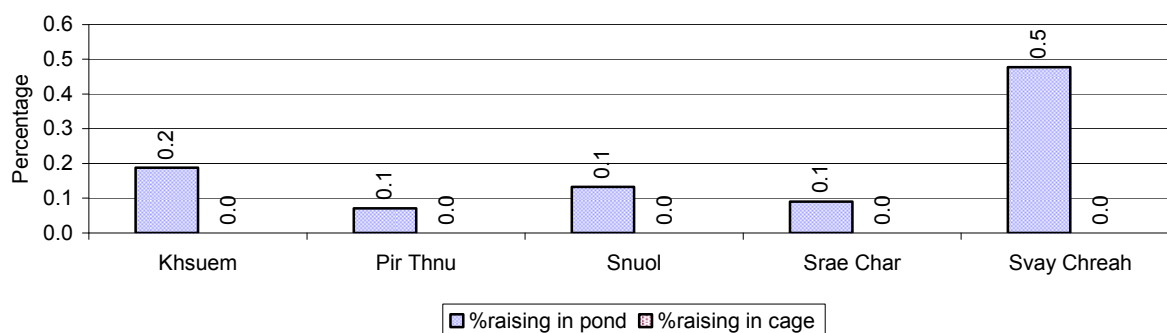
Note: Number of farm places recorded by village chief, not by counting number of livestock in each farm

2.5.36 Families raising Fish over 3 years

Description	2006	2007	2008
Total number of families raising fish	10 families	15 families	19 families
% families raising fish	0%	0%	0%
Number families raising fish in pond	10 families	15 families	19 families
% families raising fish in pond	0%	0 %	0%
Number fish pond	10 pond(s)	18 pond(s)	35 pond(s)
No. of ponds per family	1.0 pond/families	1.2 pond/families	1.8 pond/families
Number of families raising fish in cage	0 families	0 families	0 families
%families raising fish in cage	0 %	0 %	0%
Number of fish cage	0 cage(s)	0 cage(s)	0 cage(s)
No. of fish cage per family	- cage /families	- cage /families	- cage /families

Note: % of families raising fish or fish in ponds or cages is calculated a percentage of the total number of families.

2.5.37 Percentage of Families raising Fish, by Commune, in 2008



Note: Calculated as a percentage of the total number of families in the commune.

2.5.38 Shrimp and Prawn Farming over 3 years

Description	2006	2007	2008
Number of families raising shrimps	0 families	0 families	0 families
% Families raising shrimps	0%	0%	0%
Number of shrimp ponds	0 pond	0 pond	0 pond
Total area raising shrimps	0 ha	0 ha	0 ha
Area per family	-ha/families	-ha/families	-ha/families
Number of families raising prawns	0 families	0 families	0 families
% families raising prawns	0%	0%	0%
Number prawn ponds	0 pond	0 pond	0 pond
Ponds per families	- pond/families	-pond/families	-pond/families
Number of prawn cages	0 cage	0 cage	0 cage
Cages per families	0 cage /families	0 cage /families	0 cage /families

Note: Percentage of families raising either prawns or shrimp is calculated against the number of families, who do aquaculture farming, NOT the total population.

2.5.39 Numbers of Families raising Shrimps and number of Shrimp Ponds, by Commune, in 2008

There were none of these in this District in 2008

2.5.40 Number of Families raising Prawn and Number of Prawn Ponds/Cages, by Commune, in 2008

There were none of these in this District in 2008

3 Social Aspects

3.1 Education

3.1.1 Kindergarten in the District over 3 years

Description	2006	2007	2008
Number of community kindergarten schools	0 school(s)	0 school(s)	2 school(s)
Number of community kindergarten class rooms	0 room(s)	0 room(s)	2 room(s)
Number of community kindergarten classes	0 class(es)	0 class(es)	2 class(es)
Number of community kindergarten teachers	0 person(s)	0 person(s)	2 person(s)
Number of women community kindergarten teachers	0 women	0 women	2 women
Number of state and private kindergarten schools	2 school(s)	2 school(s)	3 school(s)
Number of state and private kindergarten class rooms	3 room(s)	2 room(s)	3 room(s)
Number of state and private kindergarten classes	3 class(es)	2 class(es)	3 class(es)
Number of state and private kindergarten teachers	4 person(s)	2 person(s)	4 person(s)
Number of women state and private kindergarten teachers	3 women	2 women	4 women

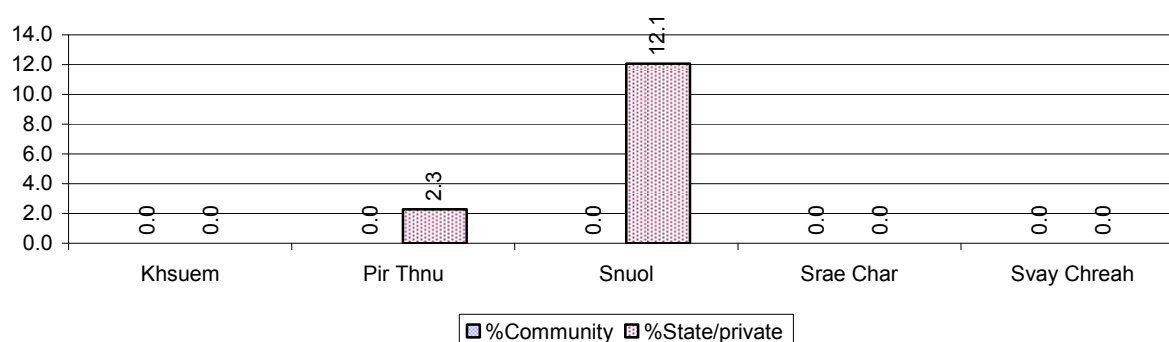
3.1.2 Percentage enrolment at Kindergarten level over 3 years

This table shows the percentage of the total 3-5 year old population attending kindergarten.

Description	2006 %	2007 %	2008	
			%	Number
Total percentage of children, 3-5 yrs, go to kindergarten	12%	7%	3%	175 person(s)
Percentage of children, 3-5 yrs, go community kindergarten	4%	1%	0%	0 person(s)
Percentage children, 3-5 yrs, go state/private kindergarten	8%	6%	3%	175 person(s)

Note: Calculated against the total for that age group

3.1.3 Percentage of Children 3-5 yrs attending Kindergarten, by Commune, in 2008



3.1.4 Basic Education over 3 years

Primary School

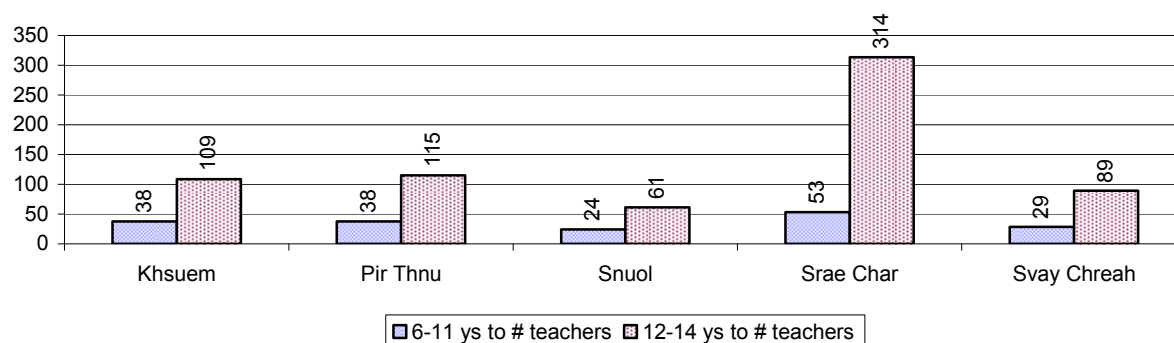
Description	2006	2007	2008
Number of primary schools	44 school(s)	49 school(s)	49 school(s)
Number of primary school rooms	173 room(s)	203 room(s)	204 room(s)
Number of primary classes	270 class(es)	251 class(es)	282 class(es)
Number of primary teachers	189 person(s)	224 person(s)	256 person(s)
Ratio of children 6-11 yrs to school	148	164	182
Ratio of children 6-11 yrs to school room	38	40	44
Ratio of children 6-11 yrs to class	24	32	32
Ratio of children 6-11 yrs to teacher	34	36	35

Note: According to education norm, children 6-11 yrs should attend primary school, while 12-14 yrs should be in lower secondary school, but in reality this varies.

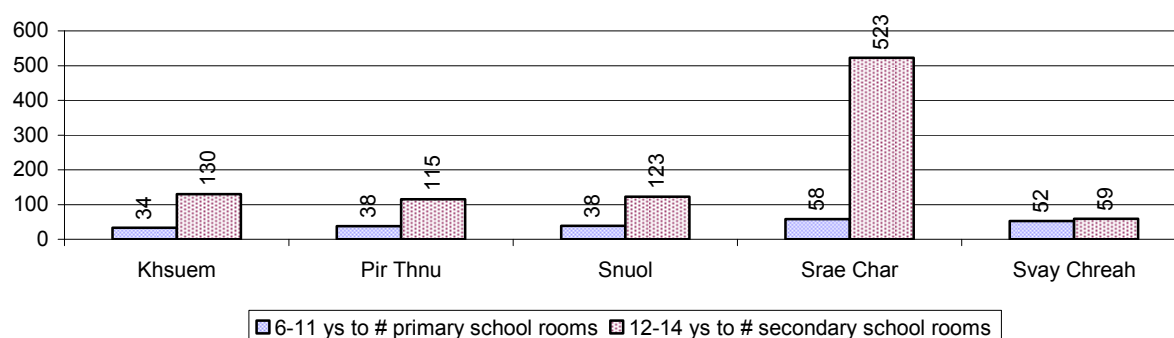
Lower Secondary School

Description	2006	2007	2008
Number of lower secondary schools	7 school(s)	7 school(s)	7 school(s)
Number of lower secondary school rooms	37 room(s)	39 room(s)	35 room(s)
Number of lower secondary classes	26 class(es)	26 class(es)	27 class(es)
Number of lower secondary teachers	45 person(s)	44 person(s)	44 person(s)
Ratio children 12-14 yrs to school	444	582	677
Ratio of children 12-14 yrs to school room	84	105	135
Ratio of children 12-14 yrs to class	120	157	175
Ratio of children 12-14 yrs to teacher	69	93	108

3.1.5 Ratio of 6-11 year old and 12-14 year old Children to number of Teachers, by Commune, in 2008



3.1.6 Ratio of 6-11 year old and 12-14 year old Children to number of School Rooms, by Commune, in 2008



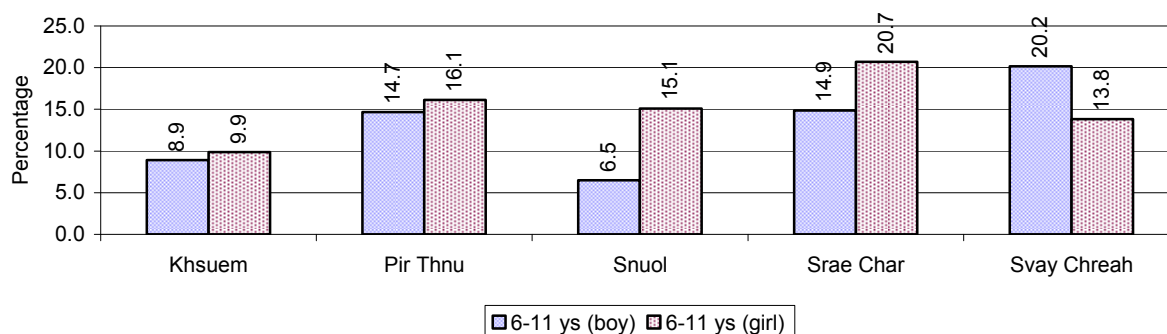
3.1.7 Enrolment status at Primary Level over 3 years

Description	2006 %	2007 %	2008	
			%	Number
Total children aged 6-11 years old	15%	17%	17%	8,931 person(s)
Total children aged 6-11 who are in school	82%	76%	86%	7,652 person(s)
Total children aged 6-11 who are not in school	18%	24%	14%	1,279 person(s)
Total girls aged 6-11 years old	15%	17%	16%	4,371 person(s)
Total girls aged 6-11 who are in school	82%	72%	84%	3,684 person(s)
Total girls aged 6-11 who are not in school	18%	28%	16%	687 person(s)
Total boys aged 6-11 years old	15%	16%	17%	4,560 person(s)
Total boys aged 6-11 who are in school	83%	81%	87%	3,968 person(s)
Total boys aged 6-11 who are not in school	17%	19%	13%	592 person(s)

Note 1: Percentage is calculated on the basis of the total number of children within 6-11 year age group for the first 3 rows and for the total girls and the total boys aged 6-11 yrs.

Note 2: Number of girls aged 6-11 who are in & not in school is calculated against the total number of girls aged 6-11 yrs. Number boys, 6-11 yrs who are in & not in school are calculated against the total number of boys aged 6-11 yrs.

3.1.8 Percentage of 6-11 year old Children not in School, by Commune, in 2008



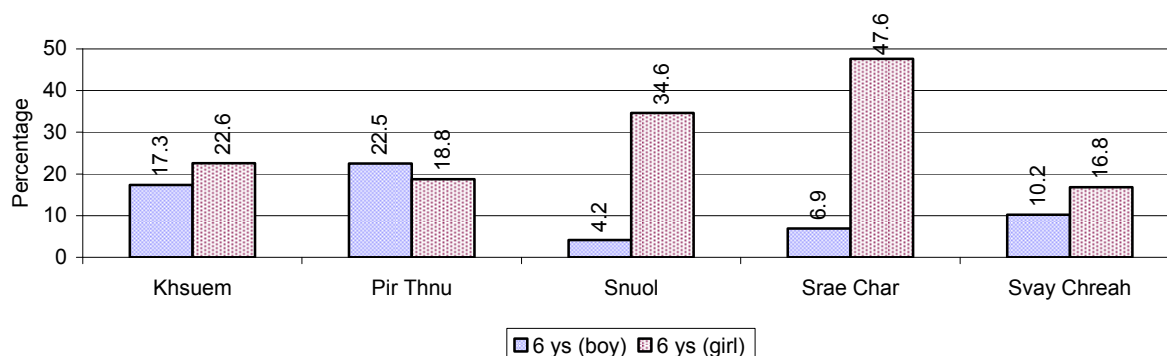
Note: calculated on the basis of the total number of children within 6-11 year age group in the commune.

3.1.9 Enrolment of 6 year old Children over 3 years

Description	2006 %	2007 %	2008	
			%	Number
Total % and number of children aged 6 years old	3%	4%	5%	2,711 person(s)
Total % of children aged 6 years old in school	68%	72%	84%	2,275 person(s)
Total % of children aged 6 years old not in school	32%	28%	16%	436 person(s)

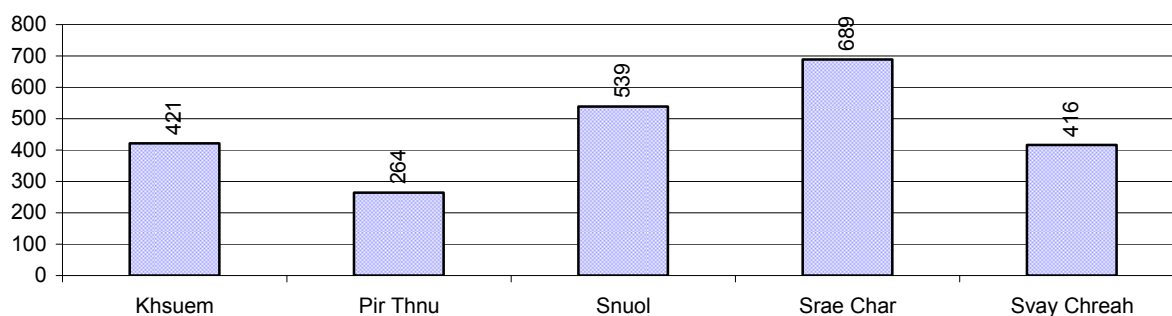
Note: First row calculated as a percentage of total population. Second and third row calculated as a percentage of the total number of 6 year olds.

3.1.10 Percentage of 6 year old Children not in School, by Commune, in 2008



Note: Calculated as a percentage of total 6 year old population

3.1.11 Number of 5 year old Children in each Commune in 2008

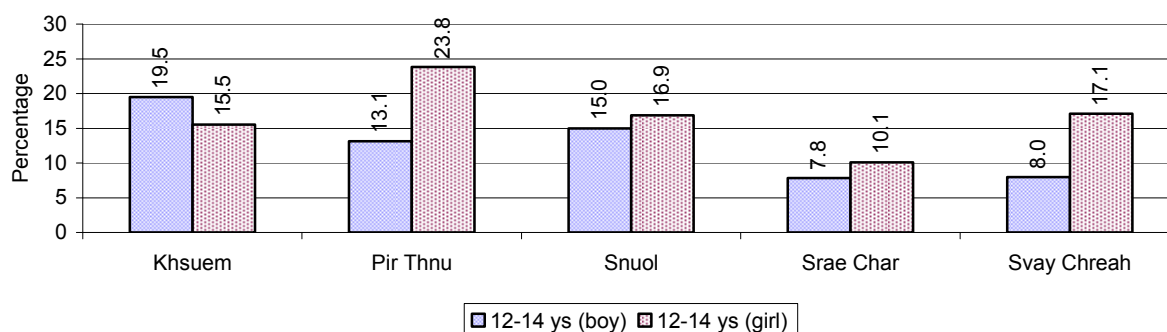


3.1.12 Enrolment at Lower Secondary Level over 3 years

Description	2006 %	2007 %	2008	
			%	Number
Total children aged 12-14 years old	7%	8%	9%	4,737 person(s)
Children aged 12-14 years old in school	86%	82%	86%	4,090 person(s)
Children aged 12-14 years old not in school	14%	18%	14%	647 person(s)
Total girls aged 12-14 years old	7%	8%	9%	2,297 person(s)
Girls aged 12-14 years old in school	85%	81%	84%	1,940 person(s)
Girls aged 12-14 years old not in school	15%	19%	16%	357 person(s)
Total boys aged 12-14 years old	7%	9%	9%	2,440 person(s)
Boys aged 12-14 years old in school	88%	83%	88%	2,150 person(s)
Boys aged 12-14 years old not in school	12%	17%	12%	290 person(s)

Note: Percentage is calculated on the basis of number of the total number of children within 12-14 yrs group, except for the first row of each section which is calculated on the basis of the total population.

3.1.13 Percentage of 12-14 year olds not in School, by Commune, in 2008



Note: Calculated as a percentage of the total 12-14 year old population in each commune

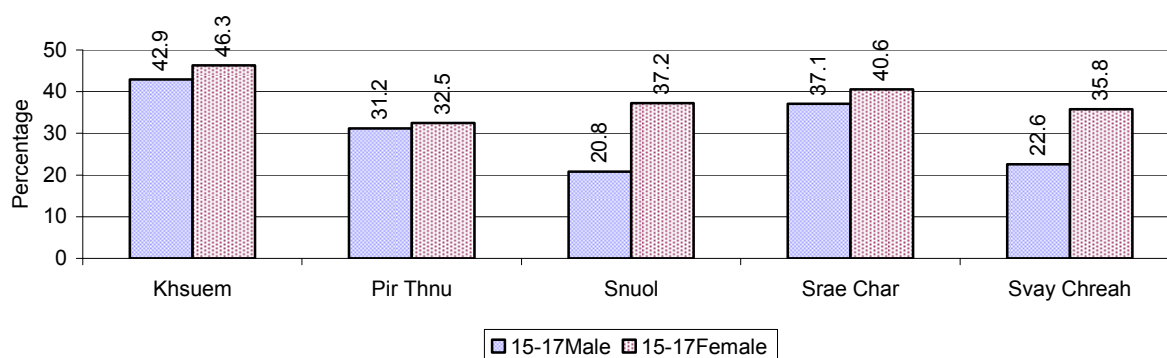
3.1.14 Upper Secondary Schools over 3 years

Description	2006	2007	2008
Number of upper secondary schools	1 school(s)	1 school(s)	1 school(s)
Number of upper secondary school rooms	3 room(s)	20 room(s)	12 room(s)
Number of upper secondary classes	3 class(es)	11 class(es)	12 class(es)
Number of upper secondary teachers	3 person(s)	23 person(s)	27 person(s)
Ratio of 15-17 yr olds to number of school	2,976	3,755	4,362
Ratio of 15-17 yr olds to number of school room	992	188	364
Ratio of 15-17 yr olds to number of classes	992	341	364
Ratio of 15-17 yr olds to number of teacher	992	163	162

3.1.15 Enrolment of 15-17 year old teenagers over 3 years

Description	2006	2007	2008
Number of teenage, 15-17 years old	2,976 person(s)	3,755 person(s)	4,362 person(s)
Number of teenage, 15-17 years old, who are not studying	839 person(s)	1,247 person(s)	1,507 person(s)
Percentage of teenage, 15-17 years old not studying	28%	33%	35%

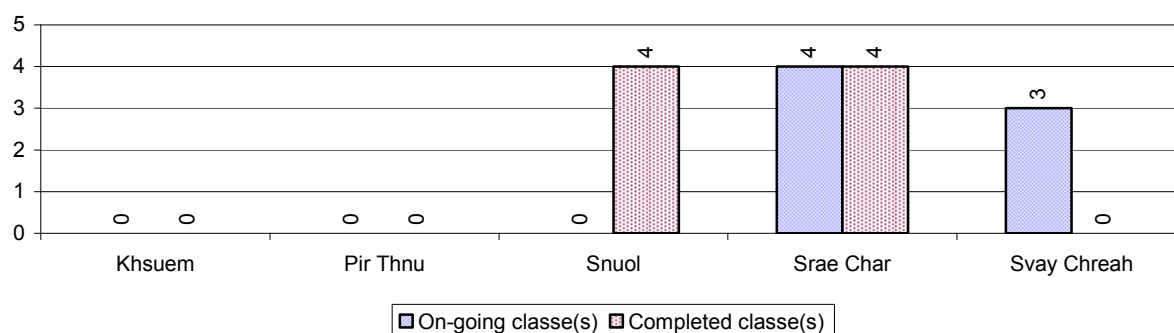
3.1.16 Percentage of 15-17 year old Teenagers not at School, by Commune, in 2008



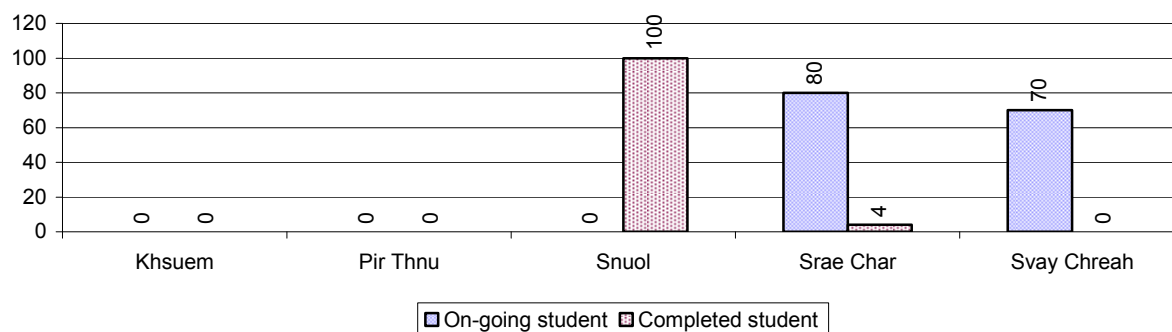
3.1.17 Literacy Classes as of 2008

Literacy classes	Organized by:		Other Program(s)	Total
	PDoEYS	NGOs		
Number of On-going literacy classes	0 class(es)	7 class(es)	0 class(es)	7 class(e(s)
Number of literacy students in on-going classes	0 person(s)	150 person(s)	0 person(s)	150 person(s)
Completed literacy class(es)	4 classes	4 classes	0 classes	8 classes
Number of literacy students that have completed literacy classes	100 person(s)	4 person(s)	0 person(s)	104 person(s)
Number of students that passed	100 person(s)	0 person(s)	0 person(s)	100 person(s)

3.1.18 Number of on-going and completed Literacy Classes, by Commune, in 2008



3.1.19 Students of on-going & completed Literacy Classes, by Commune, in 2008

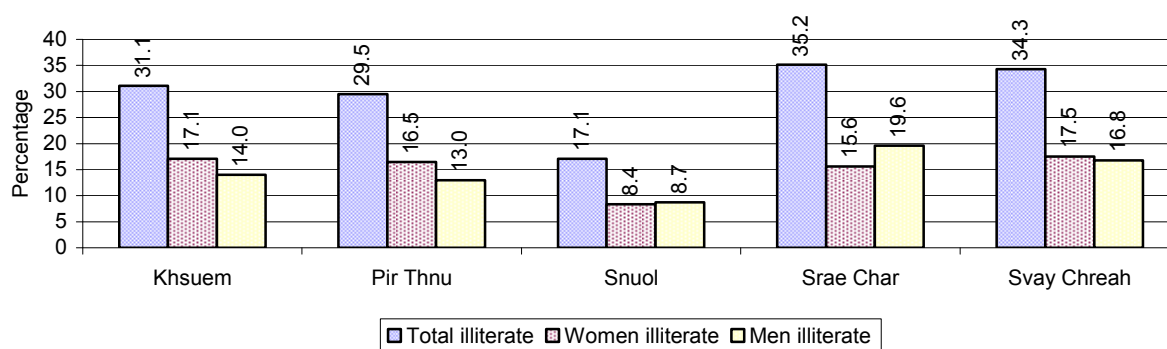


3.1.20 Percentage of illiterate People between 15-60, over 3 years

Illiteracy Status	2006 %	2007 %	2008	
			%	Number
Illiterate people, 15-60 years old	36%	30%	29%	8,165 person(s)
Illiterate females, 15-60 years old	20%	17%	14%	4,038 person(s)
Illiterate people, 15-17 years old	20%	15%	18%	797 person(s)
Illiterate females, 15-17 years old	10%	9%	9%	373 person(s)
Illiterate people, 18-24 years old	28%	26%	24%	1,489 person(s)
Illiterate females, 18-24 years old	16%	15%	13%	801 person(s)
Illiterate people, 25-60 years old	42%	35%	33%	5,879 person(s)
Illiterate females, 25-60 years old	23%	20%	16%	2,864 person(s)

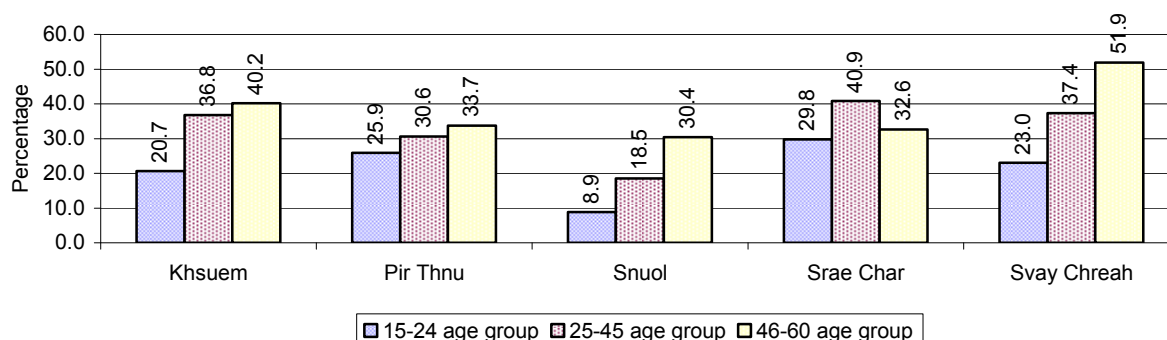
Note: Percentage is calculated on the basis of number of people in age each group.

3.1.21 Percentage illiterate People among 15-60 yrs old, by Commune, in 2008



Note: Percentages are calculated on the basis of number of people in that age group.

3.1.22 Percentage illiterate People for 15-24 yrs, 25-45 yrs and 46-60 yrs, by Commune, in 2008



Note: Percentage of illiterate people in each age group is calculated on the basis of number of people in that age group.

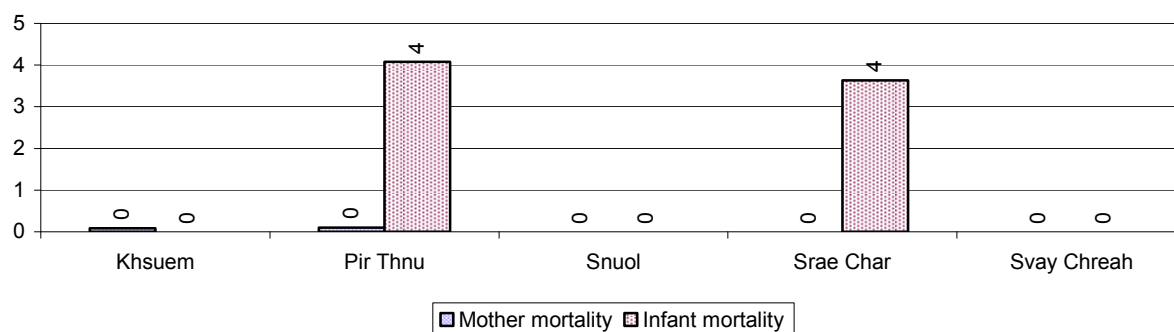
3.2 Health

3.2.1 Health Situation of Women and Children, over 3 years

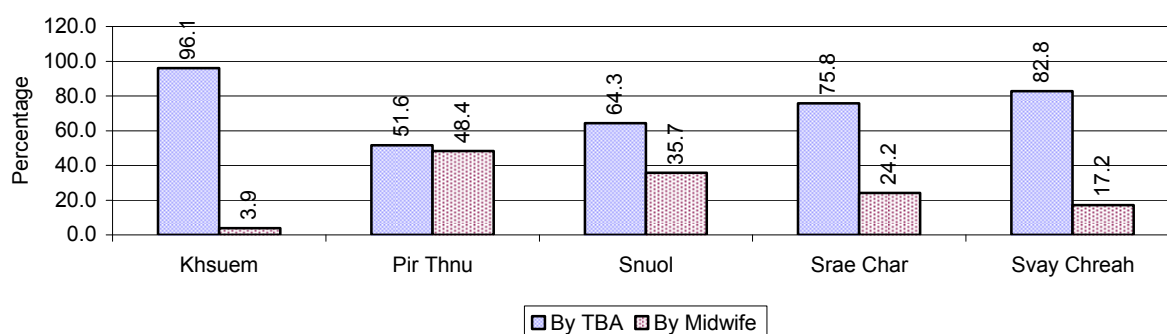
Description	2006	2007	2008
Number families with a birth during the year	692 families	750 families	732 families
Number of women who had their baby delivered by a TBA	561 person(s)	579 person(s)	556 person(s)
Percentage of women who had their baby delivered by a TBA	81 %	77 %	76 %
Number of women who had their baby delivered by a midwife	131 person(s)	171 person(s)	176 person(s)
Percentage of women had their baby delivered by a midwife	19 %	23 %	24 %
Number of mothers who died within 1 month of giving birth	5 person(s)	3 person(s)	2 person(s)
Mothers who died within 1 month of giving birth per 100,000 families having a delivery	723	400	273
Number of infants born during the year	681 person(s)	752 person(s)	733 person(s)
Number of Infants who died within 1 month	17 person(s)	12 person(s)	6 person(s)
Infants mortality within 1 month per 1,000 births	25	16	8
Number of children who died below the age of 5.	13 person(s)	19 person(s)	14 person(s)
Number of infants, aged 9-12 months, born during the year	303 person(s)	406 person(s)	445 person(s)
Nr. infants, aged 9-12 months, not receiving full immunization	17 person(s)	34 person(s)	78 person(s)
% of 9-12 months infants, not receiving full immunization	6 %	8 %	18 %

Note: TBA = Traditional Birth Attendant

3.2.2 Mothers dying within 0 days to 1 month of giving Birth and Infants dying within 1 month in 2008, by Commune

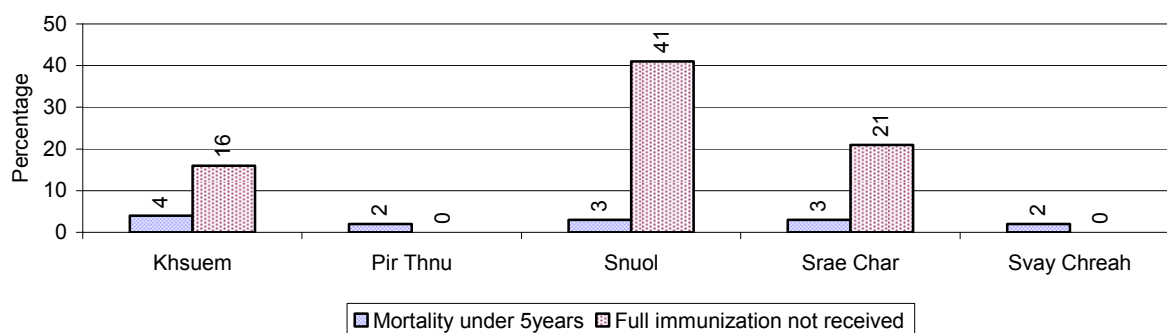


3.2.3 Percentage of Women delivering with a TBA or Midwife, by Commune



Note: Calculated as a percentage of total deliveries

3.2.4 Percentage of Children dying below 5 & of 9-12 months not receiving full Immunization, by Commune, in 2008



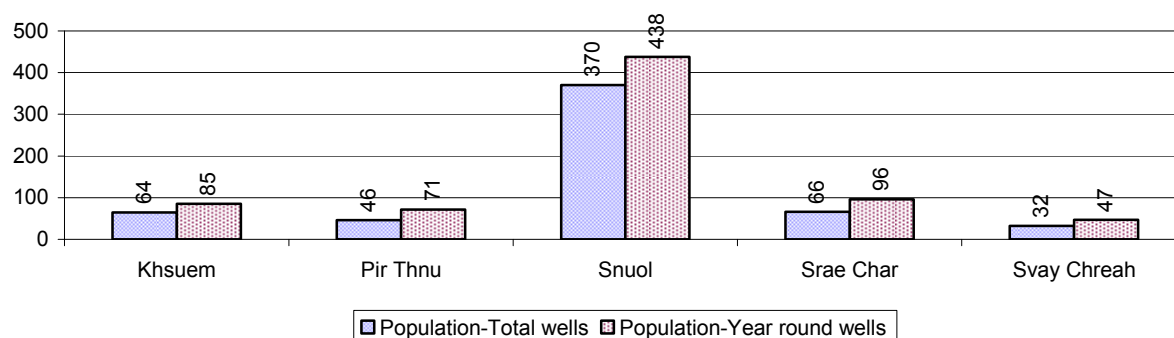
Note: Mortality rate calculated as a percentage of the total 5 year old population. Lack of immunization received calculated as a percentage of the total number 9-12 months olds there are

3.3 Water and Sanitation

3.3.1 Number of different types of Wells over 3 years

Type of wells	Number of wells by year		
	2006	2007	2008
<i>Total number of pumped or mixed wells</i>	402	612	420
Year-round usable pumped or mixed wells	294	518	315
Dry season unusable pump or mixed wells	108	94	105
Pump or mixed wells needing repair/rehabilitation	106	131	94
<i>Total number of ring wells</i>	161	570	403
Year-round usable ring wells	123	486	259
Dry season unusable ring wells	38	84	144
Ring wells needing repair/rehabilitation	50	51	112
<i>Total number of unprotected dug wells</i>	1,430	1,244	1,690
Year-round usable unprotected dug wells	1,240	1,029	1,417
Dry season unusable unprotected dug wells	190	215	273

3.3.2 Ratio of People to Wells, by Commune, in 2008

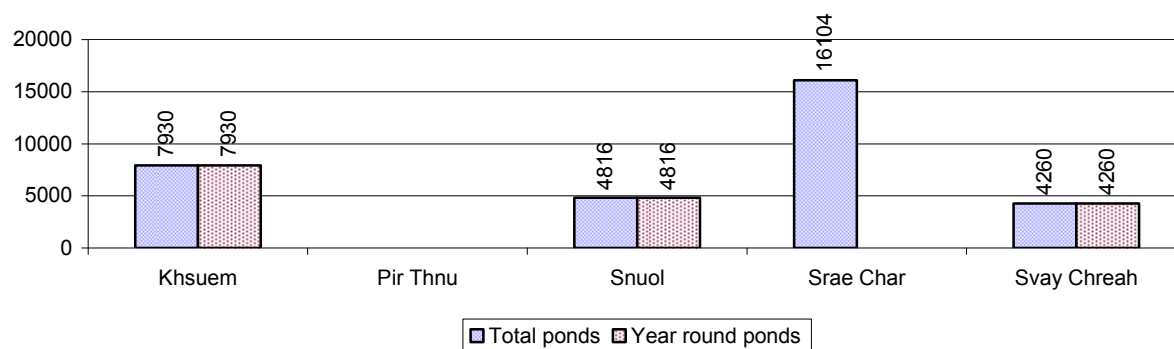


Note: Year-round wells excluding unprotected wells

3.3.3 Potable Ponds over 3 years

Type of Pond	2006	2007	2008
<i>Total number of normal-type ponds</i>	3 pond	4 pond	7 pond
Year-round usable normal-type ponds	1 pond	3 pond	6 pond
Dry season unusable normal-type ponds	2 pond	1 pond	1 pond
Normal-type ponds needing repair/rehabilitation	3 pond	1 pond	2 pond
<i>Total number of filter ponds</i>	1 pond	1 pond	0 pond
Year-round usable filter ponds	1 pond	1 pond	0 pond
Filter ponds, dry season unusable	0 pond	0 pond	0 pond
Filter ponds needing repair/rehabilitate	0 pond	1 pond	2 pond

3.3.4 Ratio of People to normal Ponds, by Commune in 2008



3.3.5 Ratio of People to Filter Ponds, by Commune, in 2008

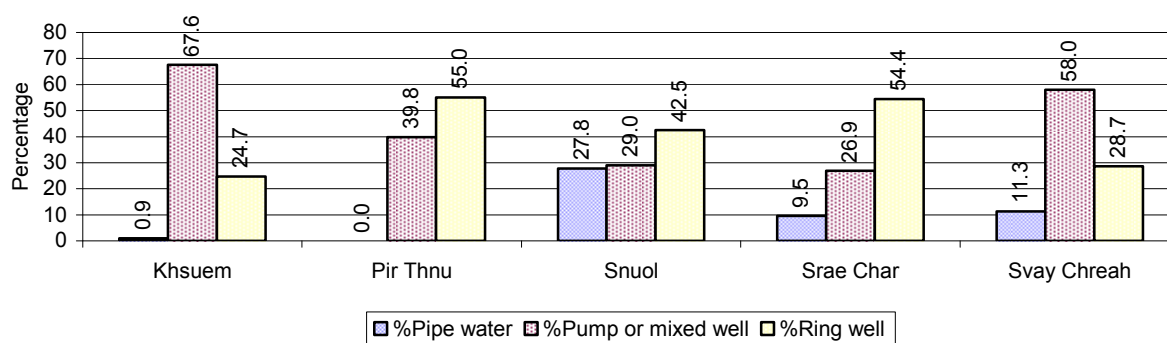
There were no filter ponds in this District in 2008

3.3.6 Source of potable Water for Households, over 3 years

Water sources	2006	2007	2008	
	%	%	%	Number
Families using water from purification system	7%	3 %	12 %	1,357 families
Families using water from pump, mixed wells	34%	43 %	40 %	4,382 families
Families using water from ring wells and open dug wells	55%	50 %	43 %	4,739 families
Families using water from pond	1%	0 %	0 %	11 families
Families using water from rain water storage	0%	0 %	0 %	1 families
Families using water from rivers, lakes, natural ponds and reservoirs	3%	3 %	5 %	526 families

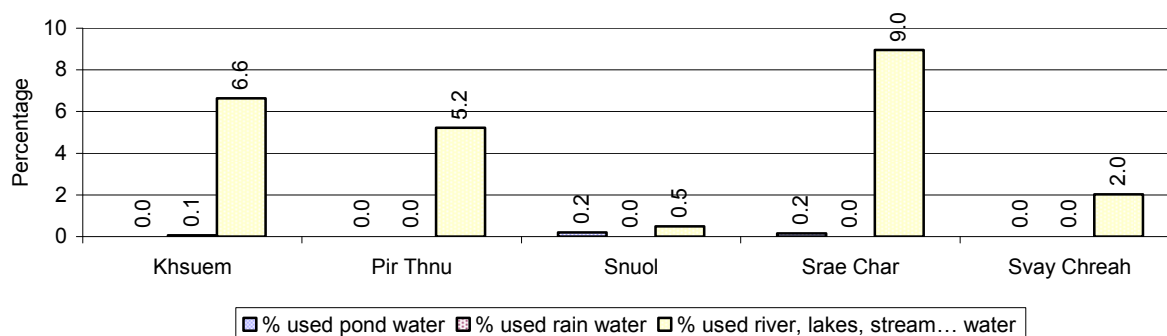
Note: Calculated as a percentage of the total number of families.

3.3.7 Percentage Families using different Water Sources, by Commune, in 2008



Note: Calculated as a percentage of the total number of families in each commune

3.3.8 Percentage Families using Water from Rain Water Storage, Ponds and natural Sources (rivers/lakes/natural ponds/reservoirs), by Commune, 2008



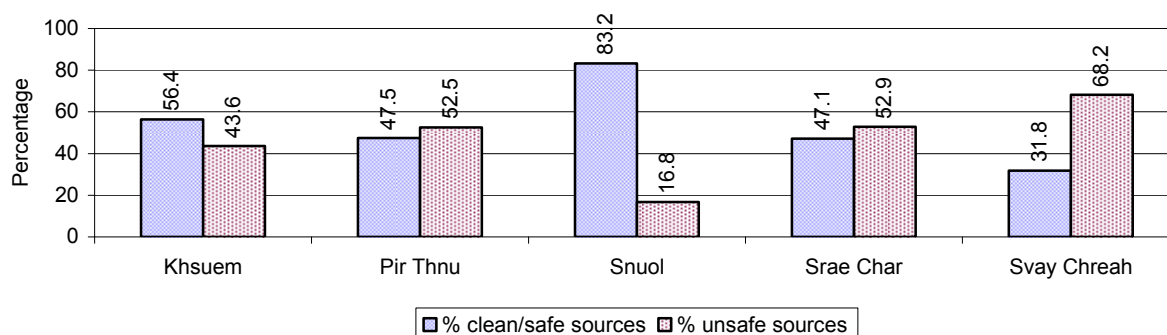
Note: Calculated as a percentage of the total number of families in each commune

3.3.9 Drinking Water Sources in the dry Season over 3 years

Percentage Families that get drinking water from:	2006	2007	2008	
	%	%	%	Number
from clean/safe sources	57 %	43 %	56 %	6,175 families
from unsafe sources	43 %	57 %	44 %	4,841 families

Note: Calculated as a percentage of the total number of families.

3.3.10 Percentage Families using safe and unsafe Water Sources in the dry Season, by Commune, in 2008



Note: Calculated as a percentage of the total number of families in each commune.

3.3.11 Drinking Water Purification by Households, over 3 years

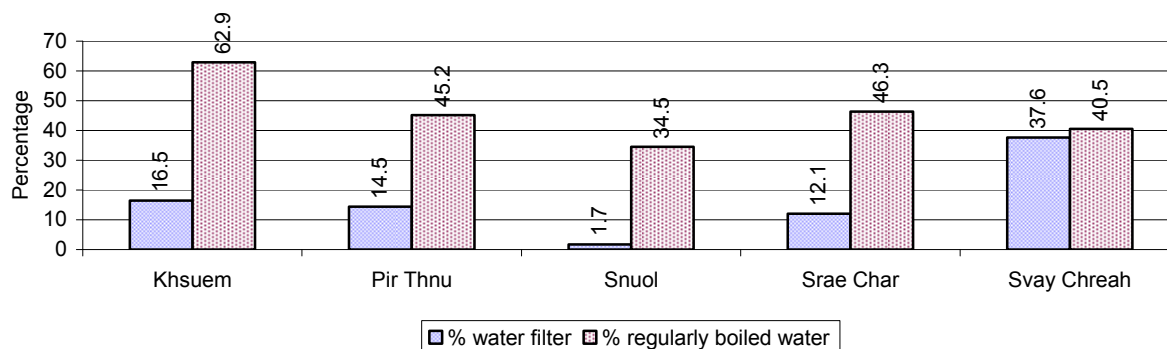
This table shows the different ways families make water safe for drinking.

Families, who:	2006	2007	2008	
	%	%	%	Number
Filter water for drinking	13%	12%	14 %	1,551 families
Boil water for drinking	49%	45%	44 %	4,898 families

Note: Calculated as a percentage of the total number of families

3.3.12 Percentage Families filtering Water or regularly boiling Water, by Commune, in 2008

This graph shows the different ways families make drinking water safe.



Note: Calculated on as a percentage of the total number of families in each commune.

3.3.13 Families' access to Water, over 3 years

Families access to water	2006	2007	2008	
	%	%	%	Number
Families with water at home or in less than 150m	64%	61%	58 %	6,419 families
Families with water 150m or more away from home	26%	14%	20 %	2,169 families

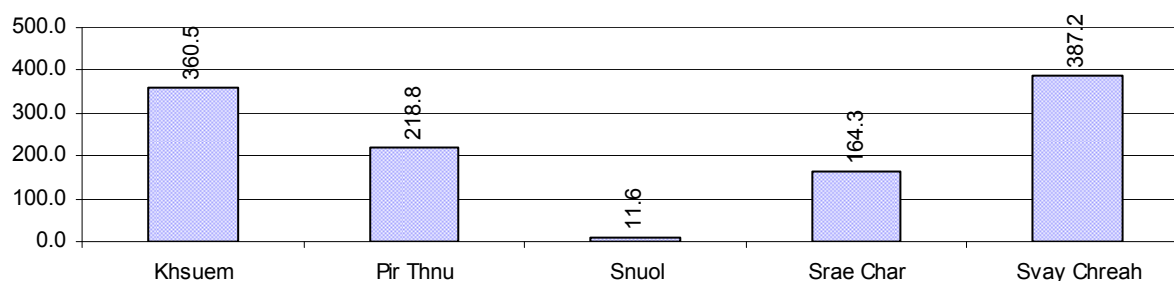
Note: Calculated as a percentage of the total number of families

3.3.14 Ratio of people to Latrines over 3 years

Description	2006	2007	2008	
	Ratio	Ratio	Ratio	Number
Ratio of people to latrines	34.1	34.3	38.0	1,421.0

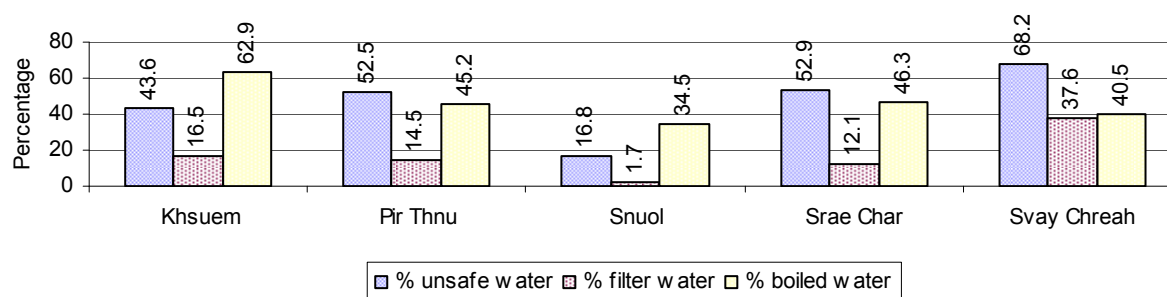
Note: Ratio calculated by dividing the number of houses with latrines by the total population

3.3.15 Ratio of People to Latrines, by Commune, in 2008



Note: Ratio calculated by dividing the number of houses with latrines by the total population in a Commune.

3.3.16 Percentage of Families drinking boiled, filtered or unsafe Water, by Commune, in 2008



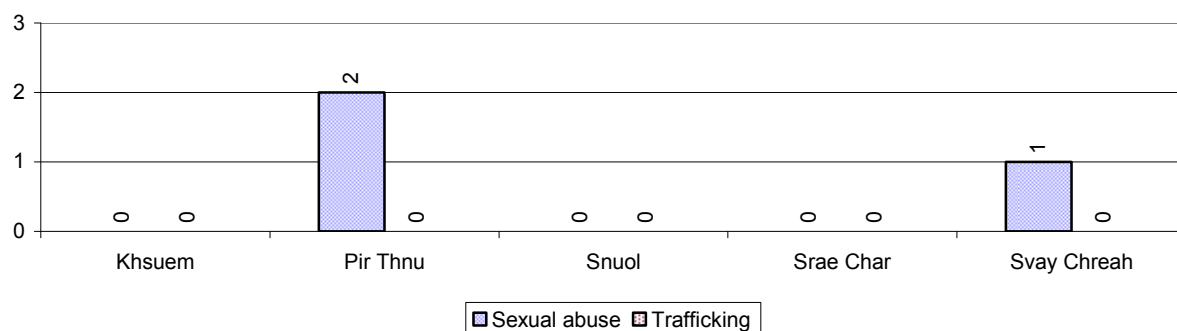
Note: Calculated as a percentage of the total number of families in each commune.

3.4 Vulnerable groups

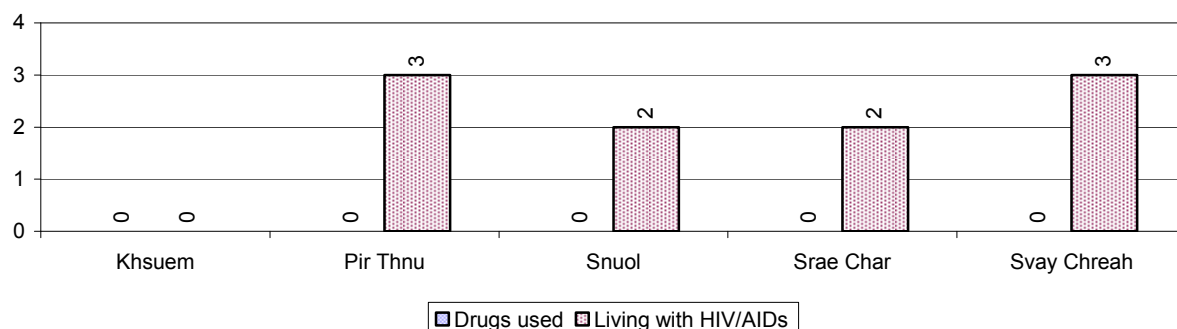
3.4.1 Vulnerable Groups in need of special Protection over 3 years

Vulnerable groups	2006	2007	2008
Victims of sexual abuse	4 person(s)	1 person(s)	3 person(s)
Victims of human trafficking	1 person(s)	0 person(s)	0 person(s)
Families with family member(s) using drugs	11 families	15 families	0 families
Families with family member(s) living with HIV/AIDS	4 families	8 families	10 families
Children under 18 yrs old whose parent died of AIDS	14 person(s)	18 person(s)	16 person(s)
Orphaned/abandoned children under 18 yrs old (all cases)	128 person(s)	120 person(s)	102 person(s)
Elderly persons without guardian	69 person(s)	73 person(s)	57 person(s)
Disabled people able to earn an income	26 person(s)	31 person(s)	43 person(s)
Disabled people unable to earn an income	26 person(s)	16 person(s)	28 person(s)
Disabled people under 18 yrs old	15 person(s)	6 person(s)	13 person(s)
Victims of natural disasters	200 families	42 families	11 families
Victims of land mines and unexploded weapons	10 person(s)	5 person(s)	9 person(s)

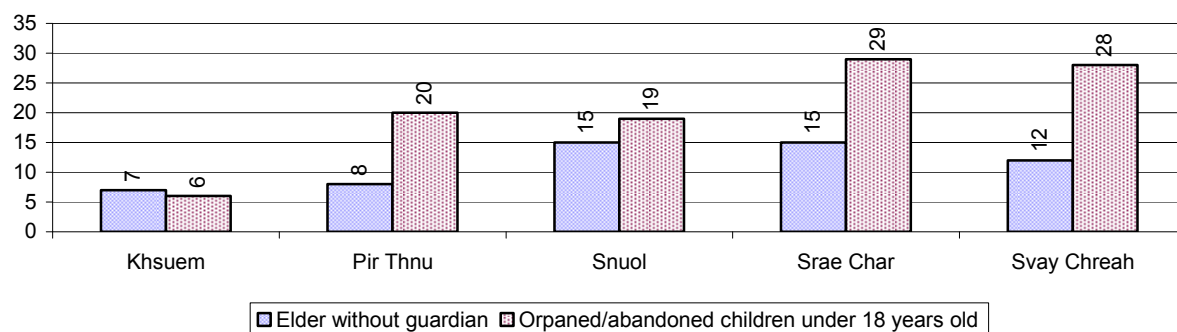
3.4.2 Registered Victims of sexual Abuse or Trafficking, by Commune, for 2008



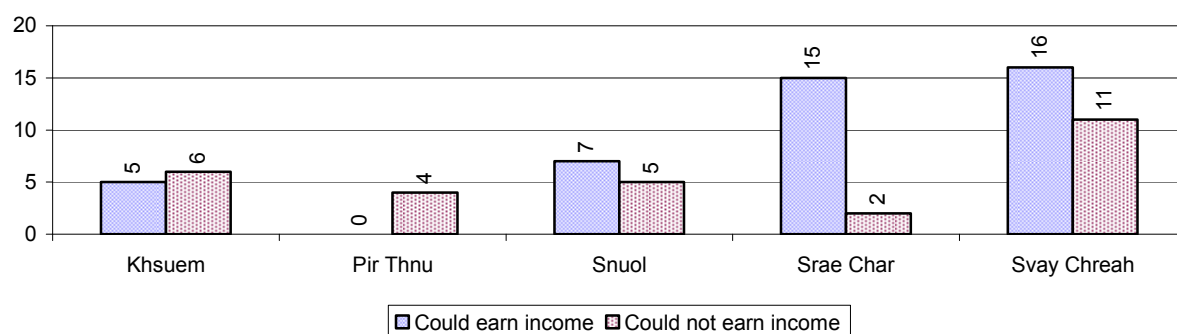
3.4.3 Registered Families with Member(s) using Drugs or living with HIV/AIDS, by Commune, for 2008



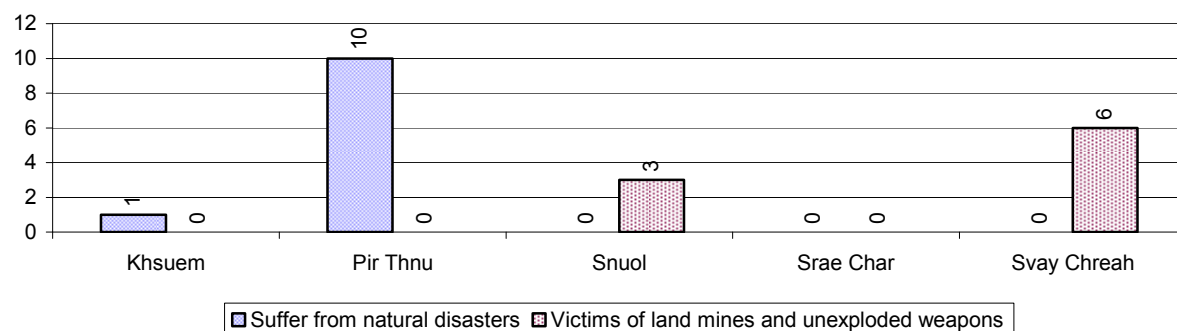
3.4.4 Elderly Persons without a Guardian and orphaned/abandoned Children under 18 years old, by Commune, for 2008



3.4.5 Number of disabled People who could or could not earn an Income, by Commune, for 2008



3.4.6 Number of Families who suffered from natural Disasters, and number of Victims of Land Mines and unexploded Weapons, by Commune, in 2008



3.5 Migration

3.5.1 Migration over 3 years

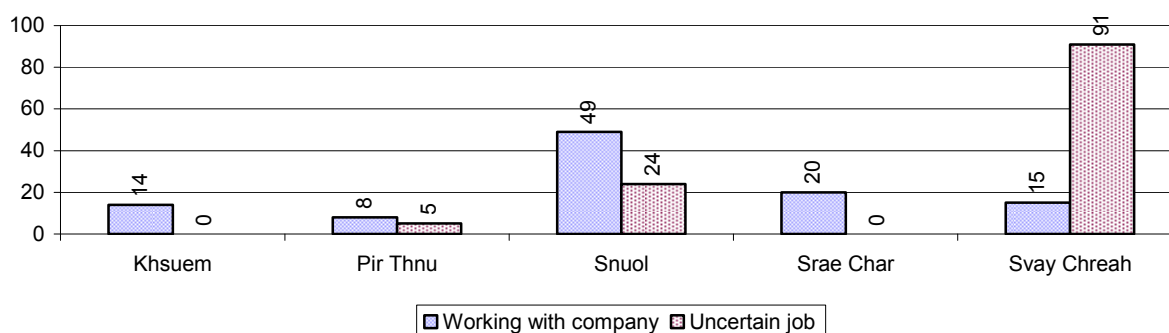
Description	2006	2007	2008
Number of families permanently in-migrated	240 families	244 families	272 families
Total number of people	1,034 person(s)	879 person(s)	1,335 person(s)
Total number of female	521 person(s)	530 person(s)	685 person(s)
Number of families permanently out-migrated	31 families	39 families	52 families
Total number of people	120 person(s)	215 person(s)	226 person(s)
Total number of female	63 person(s)	120 person(s)	109 person(s)
Number of families staying temporarily	68 families	200 families	404 families
Total number of people	253 person(s)	765 person(s)	1,483 person(s)
Total number of female	113 person(s)	379 person(s)	785 person(s)

3.5.2 Job Migration

Description	2006	2007	2008
Number of people migrated to work with company/factory	0%	0%	0% 106 persons
Number of people migrated to work, but have uncertain jobs	0%	0%	0% 120 persons

Note: Calculated as a percentage of the total population of 18-60 year olds

3.5.3 Number of People working outside their home Villages in a Company/Factory or with an uncertain Job in 2008

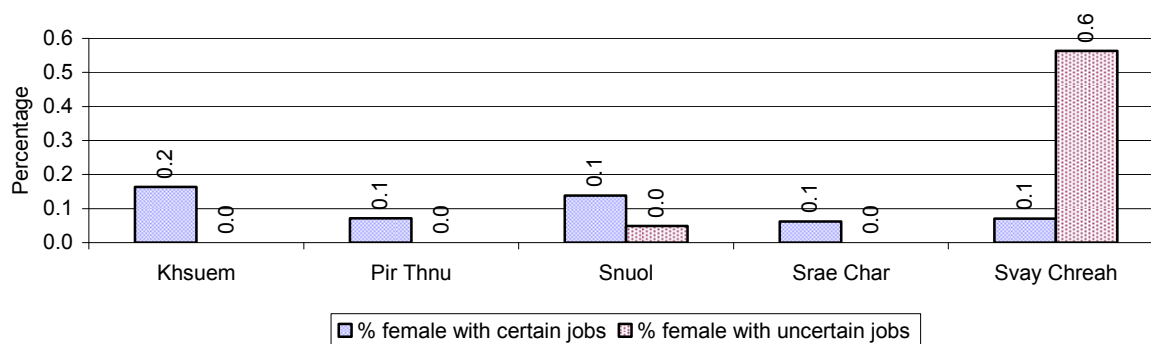


3.5.4 Female migration over 3 years

Description	2006 %	2007 %	2008	
			%	Number
Total number of migrants	0.2%	0.3%	0.4%	226 person(s)
Number of female migrants	0.1%	0.1%	0.2%	109 person(s)
Total number of migrants, who go to work with company/factory (with certain jobs)	0.1%	0.2%	0.2%	106 person(s)
Number of female migrants with certain jobs	0.1%	0.1%	0.1%	54 person(s)
Total number of migrants with uncertain jobs	0.1%	0.1%	0.2%	120 person(s)
Number of female migrants with uncertain jobs	0.0%	0.0%	0.1%	55 person(s)

Note: Calculated as a percentage of the total population

3.5.5 Percentage female Migrants with certain and uncertain Jobs, by Commune, in 2008



Note: Calculated as a percentage of the total population of the commune

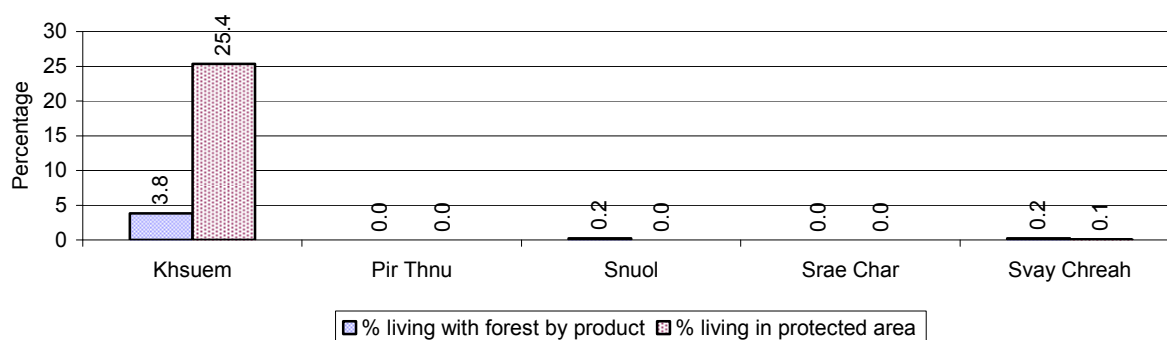
4 Natural Resources and Environment (NRE)

4.1 Families involved with NRE issues over 3 years

Description	2006 %	2007 %	2008	
			%	Number
Families living with forest by products	1 %	1 %	1 %	72 families
Families living in a protected area	4 %	2 %	4 %	406 families
Houses with access to garbage collection service	2 %	2 %	2 %	183 families
Families affected by environmental pollution	1 %	4 %	1 %	66 families
Families using chemical fertilizer	7 %	12 %	10 %	1,111 families
Families using chemical pesticide	6 %	13 %	10 %	1,127 families

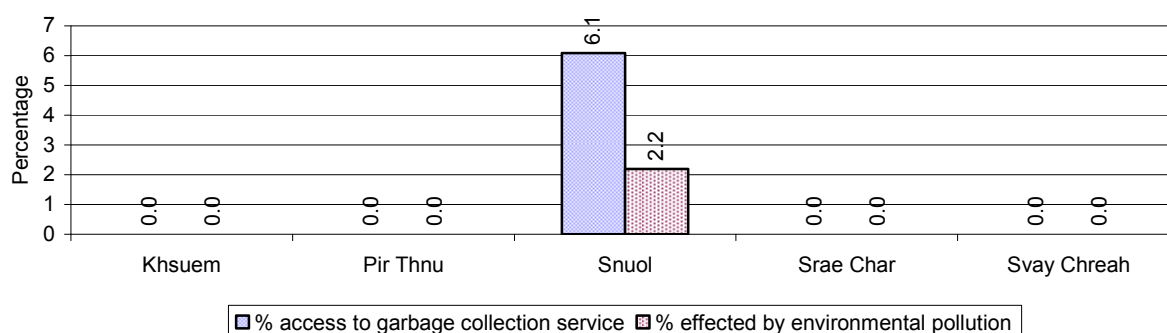
Note: Calculated as a percentage of the total number of families

4.2 Percentage of Families involved with Natural Resource issues, by Commune, for 2008



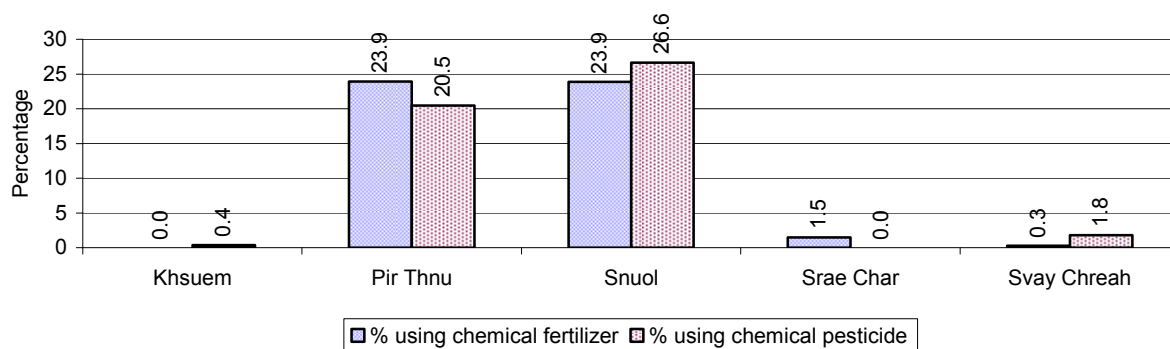
Note: Calculated as a percentage of the number of families in each commune

4.3 Percentage Houses with access to Garbage collection and Families affected by environmental Pollution, by Commune, for 2008



Note: Garbage collection is calculated as a percentage of the total number of houses in each commune and families affected by environmental pollution is calculated as a percentage of the total number of families in each commune.

4.4 Percentage Families using chemical Fertilizer and chemical Pesticides, by Commune, for 2008



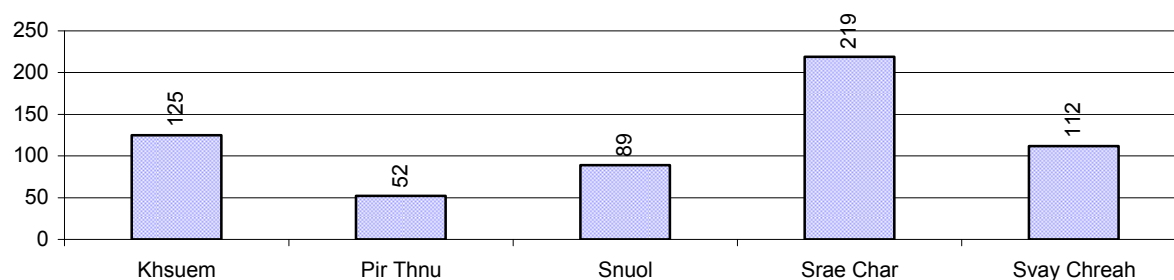
Note: Calculated as a percentage of the total number of families in each commune

5 Administration and Security

5.1 Birth Registration across 3 years

Description	2006	2007	2008
Number of infants to be registered	664 person(s)	740 person(s)	727 person(s)
Number of unregistered infants the year	196 person(s)	402 person(s)	597 person(s)
Percentage of infants unregistered	30 %	54 %	82 %

5.2 Number of unregistered Infants born in 2008, by Commune

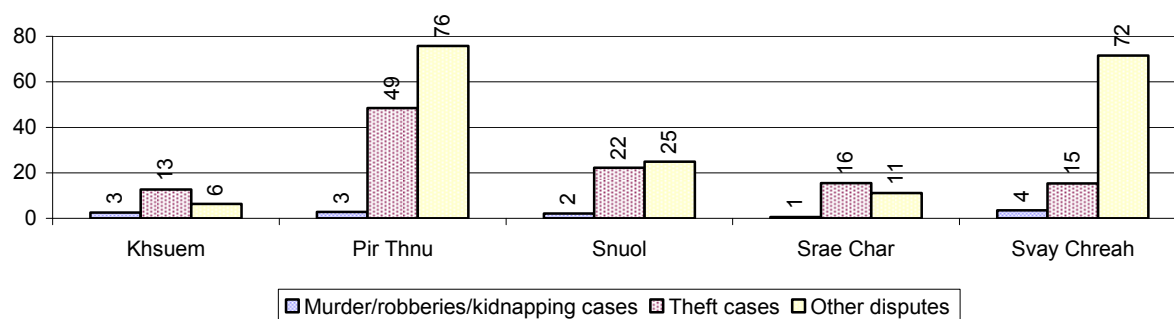


5.3 Registered criminal Cases over 3 years

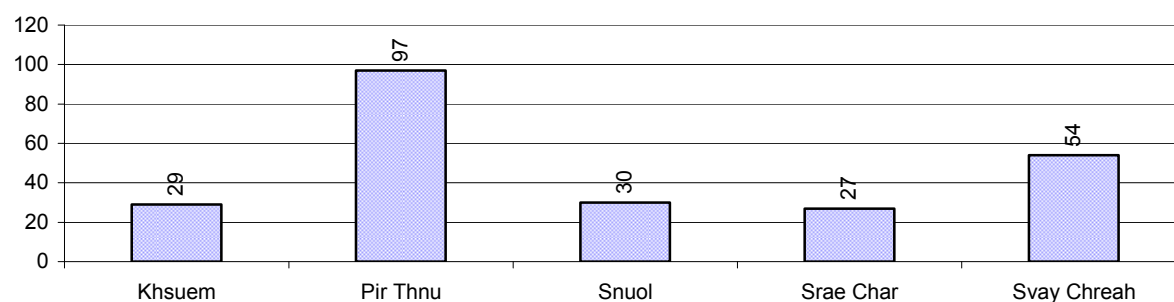
Description	2006	2007	2008
Murders, robberies and kidnapping cases	8 case(s)	6 case(s)	11 case(s)
Theft cases	107 case(s)	109 case(s)	114 case(s)
land dispute cases	123 case(s)	230 case(s)	237 case(s)
Other disputes cases	164 case(s)	194 case(s)	173 case(s)

Note: this reflects only registered criminal cases

5.4 Registered criminal Cases per 10,000 people, by Commune, for 2008



5.5 Number of registered Land Disputes, by Commune, in 2008

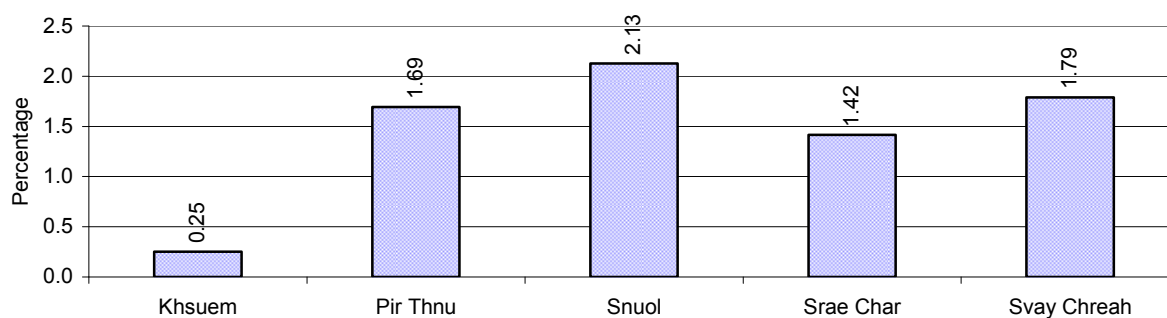


6 Gender

6.1 Registered Domestic Violence over 3 years

Description		2006	2007	2008
Families experiencing domestic violence		223 families	233 families	169 families(s)
% families experiencing domestic violence		2 %	2 %	2 %
Domestic violence cases reported by village chiefs		58 case(s)	132 case(s)	143 case(s)
Type	Physical violence	28 case(s)	62 case(s)	61 case(s)
	Sexual violence	2 case(s)	20 case(s)	5 case(s)
	Mental violence	15 case(s)	23 case(s)	35 case(s)
	Household economic violence	13 case(s)	27 case(s)	42 case(s)
Number of administrative decisions on domestic violence		42 case(s)	62 case(s)	29 case(s)
% of administrative decisions on domestic violence		72 %	47 %	20 %

6.2 Percentage of registered cases of Families experiencing domestic Violence, by Commune, in 2008



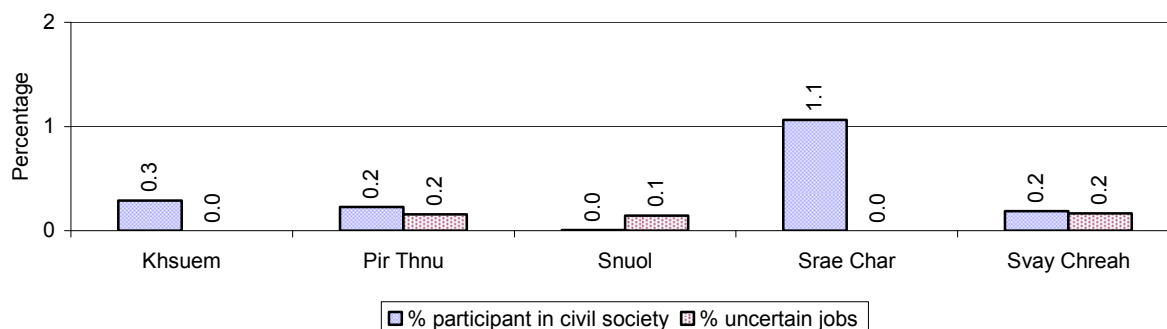
Note: Calculated as a percentage of the total number of families in each commune

6.3 Women's involvement over 3 years

Description	2006 %	2007 %	2008	
			%	Number
People participating in civil society	1%	2%	1%	500 person(s)
Women participating in civil society	0%	1%	0%	227 person(s)
People, 18-60 yrs, with uncertain/irregular jobs	0%	3%	0%	53 person(s)
Women, 18-60 yrs, with uncertain/irregular jobs	0%	1%	0%	21 person(s)

Note: Participation can be in NGOs, CBOs, credit groups, women's unions, parties and other civil society organizations. The first section is calculated as a percentage of the total population. The second section is calculated as a percentage of the total 18-60 year old population.

6.4 Percentage of Female Participants in Civil Society and of 18-60 year women with uncertain Jobs, by Commune, in 2008



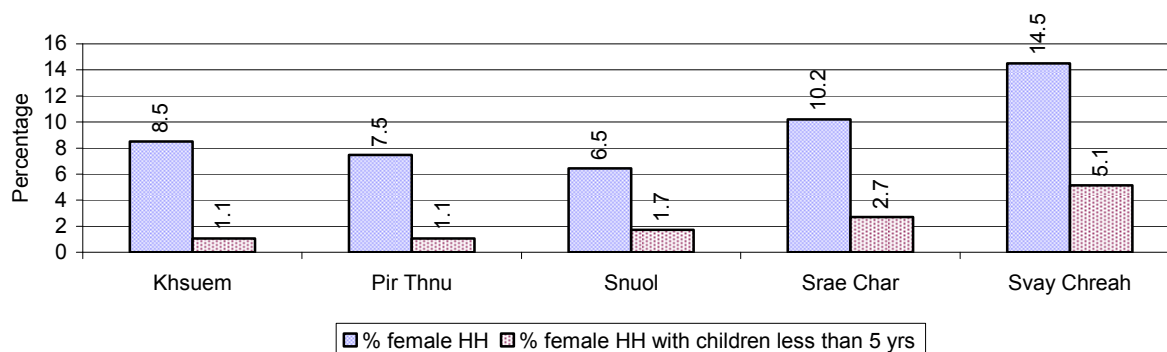
Note: Percentage of female participants in civil society is calculated as a percentage of the total population per commune. The percentage of 18-60 years old women with uncertain jobs is calculated as a percentage of the total 18-60 year old population per commune.

6.5 Female-headed Households over 3 years

Families with:	2006	2007	2008	
	%	%	%	Number
Households in which a woman is the family head	11%	9%	9%	1,017 families
Households in which a woman is the family head with children of less than 5 yrs	2%	2%	2%	260 families

Note: Calculated as a percentage of the total number of families

6.6 Percentage female-headed Households and with Children of less than 5 years old, by Commune, in 2008



Note: Calculated as a percentage of the total number of families in each commune

HH: Headed Household

7 Indigenous People in the District

7.1 Ethnic Minorities in the District over 3 years

Race of indigenous	2006		2007		2008	
	# families	# population	# families	# population	# families	# population
Phnong	198 families	842 person(s)	176 families	803 person(s)	164 families	779 person(s)
Kouy	2 families	12 person(s)	9 families	52 person(s)	6 families	35 person(s)
Stieng	1,617 families	7,525 person(s)	1,603 families	7,641 person(s)	1,761 families	8,227 person(s)
Mil	0 families	0 person(s)	0 families	0 person(s)	0 families	0 person(s)
Kroal	0 families	0 person(s)	0 families	0 person(s)	0 families	0 person(s)
Thmorn	0 families	0 person(s)	0 families	0 person(s)	0 families	0 person(s)
Khaonh	0 families	0 person(s)	0 families	0 person(s)	0 families	0 person(s)
Tompuonn	0 families	0 person(s)	0 families	0 person(s)	0 families	0 person(s)
Charay	0 families	0 person(s)	0 families	0 person(s)	0 families	0 person(s)
Kroeung	0 families	0 person(s)	0 families	0 person(s)	0 families	0 person(s)
Kavet	0 families	0 person(s)	0 families	0 person(s)	0 families	0 person(s)
Saouch	0 families	0 person(s)	0 families	0 person(s)	0 families	0 person(s)
Lun	0 families	0 person(s)	0 families	0 person(s)	0 families	0 person(s)
Kachak	0 families	0 person(s)	0 families	0 person(s)	0 families	0 person(s)
Praov	0 families	0 person(s)	0 families	0 person(s)	0 families	0 person(s)
Others	0 families	0 person(s)	0 families	0 person(s)	0 families	0 person(s)
Total	1,817 families	7,537 person(s)	1,788 families	7,693 person(s)	1,931 families	8,262 person(s)

Note: "Others" refer to other ethnic groups which are not listed.

7.2 Other Minorities in the District over 3 years

Minority	2006		2007		2008	
	# families	# population	# families	# population	# families	# population
Khmer Islamic	352 families	1,657 person(s)	466 families	2,190 person(s)	1,073 families	3,306 person(s)
Vietnamese	19 families	52 person(s)	27 families	84 person(s)	27 families	73 person(s)
Laos	1 families	2 person(s)	1 families	9 person(s)	1 families	9 person(s)

Note: Number of indigenous and minority population are additional data, so some village may not recorded.

SECTION C: PLANS AND PROJECTS

8 Priorities and Plans

8.1 Priorities of Commune Councils for 2009 in the District by Sector

The District Priority Activity Matrix (DPAM) data are taken from the CDPD. The DPAM is used for the District Integration Workshop (DIW), to show what kind of projects the commune has proposed in their Commune Investment Plan (CIP) for 2009. Donors, departments and other agencies then consider which projects they want to support and which projects they are not interested in. This results in Temporary Agreements between the Commune Council and the Supporter (NGO, Department, private donor, etc), as shown in table 8.2

No.	Project Name	Khsuem	Pir Thnu	Snuol	Srae Char	Svay Chreah	Req.Project
		100501	100502	100503	100504	100505	Total
Economic							
1	Compost fertilizer training	1 training	7 training	14 training		8 training	4
2	Chemical and pesticide application training	1 training			20 training		2
3	Vegetable growing training	8 training		70 family			2
4	Mixed farming system training		7 training				1
5	Rice seed production training					8 Team	1
6	Rice field demonstration	10 ha		30 ha		8 ha	3
7	Natural rice cultivation practice	1 training					1
8	Crop variety demos training				20 time		1
9	Rice cultivation technique training			10 training	20 training	2 training	3
10	Animal vaccination request	990 Head	14 time	2112 time	1200 Head	16 time	5
11	Village veterinary training	3 training	2 training		2 training		3
12	Animal raising training	1 training			10 training	40 training	3
13	Cow raising training		2 training	2 training			2
14	Agriculture association activation	2 Team					1
15	Agricultural marketing	1 Team					1
16	Rice seed request	240 T	2 T	480 T			3
17	Agricultural tools request	16 set					1
18	Chicken request			700 family			1
19	Family fish pond construction	8 Pond	13 Pond	35 Pond	20 Pond		4
20	Fish raising training	1 training	2 training	1 training	2 training		4
21	Fish fingerling request	8 family		30 family	20000 Head		3
22	Fish hatchery station construction			3 Pond	1 place		2
23	Culvert construct across road					13 place	1
24	Earth road construction	1 Line		1 Line			2
25	Culvert construction	25 place		41 place			2

District Data Book 2009: Development Plans and Projects

No.	Project Name	Khsuem	Pir Thnu	Snuol	Srae Char	Svay Chreah	Req.Project
		100501	100502	100503	100504	100505	Total
26	Bridger construction	5 place			7 place	6 place	3
27	River water barrier construction	2 Line					1
28	Earth road repairing	6 Line	3 Line	1 Line	24500 m	8 Line	5
29	Laterite/natural gravel road repairing	2 Line					1
30	Canal construction		5 Line	2 Line	6 place		3
31	Dam construction			2 place	3 place		2
32	Irrigation pond construction	2 place					1
33	Canal repairing	4 Line		5 Line			2
34	Dam repairing	4 place		3 place	3 place		3
35	Cash credit	200 family	1313 family	2654 Team			3
36	Rice seed bank					8 family	1
37	Rice bank establish	100 family					1
38	Pig bank			70 Head			1
39	Livestock bank	40 Head	21 Head	70 Head	10 Head		4
40	Saving group association strengthening	1 Team					1
41	Development of natural tourism area		3 place				1
42	Electricity supply				3300 m		1
43	Small-scale hydro-electricity construction			1 place			1
Social							
1	Antenatal care	16 time					1
2	Reproductive health awareness education	16 time	8 time				2
3	Antenatal care service accessibility improvement			14 time			1
4	HIV/AIDS awareness education		2 time				1
5	Health/hygiene education for local people	16 time	14 time		12 time		3
6	Health education service at health center	16 time					1
7	Women and children health care education	2 training		7 time			2
8	Transmitting disease prevention education	16 time					1
9	Maternal health education					8 time	1
10	Children immunization provision	16 time	14 time	7 time	12 time		4
11	Midwife strengthening/training	1 training					1
12	TBA training	1 training	2 training	1 training	2 training	8 training	5
13	TBA equipment needs			14 time			1
14	Mosquito nets distribution/treatment	800 mosqui-		2354 time		160	3

District Data Book 2009: Development Plans and Projects

No.	Project Name	Khsuem	Pir Thnu	Snuol	Srae Char	Svay Chreah	Req.Project
		100501	100502	100503	100504	100505	Total
		net				mosqui-net	
15	Birth delivery package/birth attendant equipment need				2 time		1
16	Health post construction/renovation	1 training					1
17	Ferric tablet and Vitamin A distribution campaign			7 time			1
18	Nutrition support				2 time		1
19	Latrine construction	400 toilet		2654 toilet			2
20	Latrine construction at school				6 place		1
21	Sanitation education	16 time					2
22	Commune health center construction		1 place		1 place		2
23	Village health post construction	3 place					1
24	Water filter equipment supply	130 Container		700 tank			2
25	Mixed wells construction				35 well		1
26	Pump wells construction	18 well		23 well			2
27	Ring wells construction	12 well	38 well	22 well			3
28	Mixed wells repairing					24 well	1
29	Pump wells repairing			11 well			1
30	Literacy class	8 class		7 class	10 class		3
31	Literacy teacher support		13 person				1
32	Literacy teacher training	1 training					1
33	Literacy class materials support	200 person		7 time			2
34	Literacy class participation encouragement		2 time				1
35	School building/furniture		4 place		8 building		2
36	Junior high school construction				1 building		1
37	School renovation			2 building			1
38	School building	2 place	4 place				2
39	Kindergarten school construction/repair	8 place		4 place	2 place		3
40	Pre-school teacher/kid keeper support				4 person		1
41	Kid center nurse training	1 training					1
42	Kindergarten equipment provision	240 person					1
43	Motivating pupil's parents for school enrollment	8 time	7 time		12 time		3
44	Teacher/volunteer teacher need	19 person		4 person	30 person		3
45	School materials support to poor pupils	540 set		210 set	2 time		3
46	Scholarship provision to poor pupils			210 time			1

District Data Book 2009: Development Plans and Projects

No.	Project Name	Khsuem	Pir Thnu	Snuol	Srae Char	Svay Chreah	Req.Project
		100501	100502	100503	100504	100505	Total
47	Dormitory construction for teacher/pupils	1 building			1 building		2
48	Vocational training		14 training	7 training			2
49	Vegetable food processing training			7 training			1
50	Electric equipment repair skill training			7 training			1
51	Non-formal class teaching/generating					16 time	1
52	Teacher/volunteer teacher training			2 training	2 training		2
53	School visit/monitoring				2 training		1
54	Teacher/volunteer teacher encouragement needs			4 person	4 time		2
55	Elderly association formation/support				6 Team		1
NREM							
1	Fishery law education	1 time	2 time	7 training	6 time	16 time	5
2	Forestry law education	16 time	2 time	7 training	12 time	16 time	5
3	Wildlife protection law education	8 time		7 time		8 time	3
4	Bamboo forest plantation/coservation	8 Forestry Community				8 time	2
5	Establishment of NREM protection community				2 Forestry Community		1
6	Kravanh essence awareness dissemination					10 time	1
7	Forestry protection poster setting up	80 piece		4 piece			2
8	Tree plantation project	5000 Tree					1
9	Illegal fishing prevention					16 time	1
10	Strengthening fishery community	1 training	2 Fishing Community		6 training		4
11	Natural water ways/reservoirs rehabilitation/conservation	1 training					1
12	Community flooded forestry support	1 piece					1
13	Fishery community boundary identification			200 Tree			1
14	Mangrove forest protection strengthening			2 training			1
15	Community forestry activities support	2 Forestry Community					2
16	Forest protection strengthening	1 set				16 time	2
17	Forestry soil improvement project	12 time					1
18	Wildlife protection enforcement			1 Team			1
19	Sewage culvert system construction/rehabilitation			1 place			1
20	Waste dumping creation/improvement	1 place					1

District Data Book 2009: Development Plans and Projects

No.	Project Name	Khsuem	Pir Thnu	Snuol	Srae Char	Svay Chreah	Req.Project
		100501	100502	100503	100504	100505	Total
21	Public rubbish bin sitting	20 Garbage bin		200 Garbage bin			2
22	Market/urban place sanitation control	1 Team					1
Administration and Security							
1	Civil registration encouragement		2 time				1
2	CC capacity strengthening			1 training			1
3	Administration and commune law training		2 training				1
4	Good governance training			1 training	2 training		2
5	Facilitation skills training				2 training		1
6	Conflict resolution training				2 training		1
7	Radio communication provision		14 set				1
8	Land law dissemination	16 time	2 time	7 time	12 time	8 time	5
9	Provision of land titles/certificates	400 doc		2654 family	500 doc		3
10	Land registration dissemination/enforcement			7 time			1
11	New village creation/dwelling establishment	340 family	296 family	700 family			3
12	Village/commune border identification			7 time		8 place	2
13	Forest protection boundary identification			4 time			1
14	Social land concession project					8 family	1
15	People guard activities formation/strengthening	17 Team	10 Team	7 Team	10 Team		4
16	Drug and related law education				12 time		1
17	Local security strengthening				1 set		1
18	Gambling control/elimination activation	8 time			12 time		2
19	Drug business/use prevention	8 time					1
20	Police post construction/renovation			1 building	1 building		2
21	Crop/livestock protection activities	4 time					1
22	Law/regulation dissemination	1 time				8 time	2
23	Human right and related law education	8 time		7 time			2
24	Mine exploitation management law dissemination					3 time	1
25	Livelihood community improvement establishment/support	2 Team					1
26	Water pump group establishment			5 set			1
27	Dead relief community formation	1 Team					1
Gender							
1	Gender mainstreaming among local people			7 training			1

District Data Book 2009: Development Plans and Projects

No.	Project Name	Khsuem	Pir Thnu	Snuol	Srae Char	Svay Chreah	Req.Project
		100501	100502	100503	100504	100505	Total
2	Gender FP strengthening	1 training					1
3	CCWCs strengthening/activation	1 training					1
4	Woman and children's rights dissemination	16 time		7 time			2
5	Women vocational training		2 training			8 time	2
6	Tailor skill training	1 training		7 training			2
7	Weaving skill training/weaving craft creation	1 training		7 training			2
8	Food cooking/processing skill training	1 training					1
9	Lady makeup/hair dressing skill training	1 training		14 training			2
10	Law against domestic violence dissemination	8 time	8 time	14 training	12 time	8 time	5
11	Law against trafficking dissemination				12 time	16 time	2
12	Trafficking of women/children control activity strengthening	8 time					1

Source: CDPD – District Priority Matrix

8.2 Temporary Agreements by Commune, for 2009²

At the District Integration Workshop (DIW) the Supporters (donors, agencies, private donors, NGOs, etc.) identify which projects/activities they would like to support or they put forward their own projects to be implemented in a particular commune. Once there is agreement between Commune Councils and Supporters on specific projects a **Temporary Agreement** is signed by the commune and the Supporter to show their mutual commitment to the identified projects/activities.

It is important to keep in mind that such Temporary Agreements do not necessarily result in implementation.

8.2.1 Temporary Agreements for 2009 as per DIW 2008 for Commune: Khsuem

Commune GIS	Commune	Temporary Agreements				Supporter	Funding Source	Listed in CIP befor DIW
		Project Name	Quantity	Unit	Est.Cost (K.Riels)			
Economic								
100501	Khsuem	Rice bank establish	2	Team	3360	Oxfam Great Britian		✓
100501	Khsuem	Fish raising training	1	training	320	Oxfam Great Britian		✓
100501	Khsuem	Rice field demonstration	5	ha	5000	Oxfam Great Britian		✓
100501	Khsuem	Village veterinary training	2	training	2880	Oxfam Great Britian		✓
100501	Khsuem	Agriculture association activation	2	Team	2400	Department of Agriculture Forestry and Fisheries		✓
100501	Khsuem	Animal vaccination request	0	Head	990	Oxfam Great Britian		✓
100501	Khsuem	Livelihood improvement group formation	2	Team	35696	Department of Agriculture Forestry and Fisheries		□
100501	Khsuem	Youth farmer club formation	1	Team	480	Department of Agriculture Forestry and Fisheries		□
100501	Khsuem	Fish fingerling request	0	family	4000	Oxfam Great Britian		✓
100501	Khsuem	Dam repairing	1	place	6000	Oxfam Great Britian		✓
100501	Khsuem	Agricultural marketing	1	Team	120	Oxfam Great Britian		✓
100501	Khsuem	Compost fertilizer training	1	training	600	Oxfam Great Britian		✓
100501	Khsuem	Livelihood improvement group formation	1	Team	17000	Oxfam Great Britian		□
100501	Khsuem	Agriculture association activation	2	Team	6200	Oxfam Great Britian		✓
100501	Khsuem	New village vet training	1	training	150	Oxfam Great Britian		□
100501	Khsuem	Small scale ploughing machine	2	set	23000	Oxfam Great Britian		□
100501	Khsuem	System of rice intensification (S.R.I) training	1	training	3000	Oxfam Great Britian		□

² Not all the data from the CDPD has been translated to English, this has resulted in some cells in the TA tables being blank.

District Data Book 2009: Development Plans and Projects

Commune GIS	Commune	Temporary Agreements				Supporter	Funding Source	Listed in CIP before DIW
		Project Name	Quantity	Unit	Est.Cost (K.Riels)			
Social								
100501	Khsuem	Ring wells construction	4	well	16000	Oxfam Great Britian		✓
100501	Khsuem	Pump wells construction	4	well	3200	Oxfam Great Britian		✓
100501	Khsuem	Water filter buckets provision	30	Container	2600	Oxfam Great Britian		□
100501	Khsuem	Forestry law education	8	class	320	Department of Education Youth and Sports		✓
100501	Khsuem	Budget support for treatment, travel cost, food cost for patient and attendants	106	person	15864	Action For Health		□
100501	Khsuem	Livelihood community improvement establishment/support	2	well	250	Department of Rural Development		✓
100501	Khsuem	Pump wells repair	15	well	0	Department of Rural Development		□
100501	Khsuem	Target trained teachers refresher training	7	person	800	Partners for Development		□
100501	Khsuem	Small fund for health center committee to combat malaria	4	Team	640	Partnership for Health and Development		□
100501	Khsuem	Malaria combat planning formulation meeting at commune level	4	training	800	Partnership for Health and Development		□
100501	Khsuem	Malaria awareness education	1	time	0	Partners for Development		□
100501	Khsuem	Trained school teacher monitoring	7	person	400	Partners for Development		□
100501	Khsuem	Latrine construction	4	toilet	200	Oxfam Great Britian		□
NREM								
100501	Khsuem	Farmer club formation	10	time	3200	Forest administration		✓
100501	Khsuem	Bamboo forest plantation/coservation	1	Forestry Community	0	Cambodia Community Development Organization		✓
100501	Khsuem	Wildlife protection law education	2	time	1600	Department of Environment		✓
100501	Khsuem	Community forestry activities support	0	training	0	Cambodia Community Development Organization		✓
100501	Khsuem	Forestry law education	0	time	0	Cambodia Community Development Organization		✓
100501	Khsuem	Forest protection strengthening	0	set	0	Cambodia Community		✓

District Data Book 2009: Development Plans and Projects

Commune GIS	Commune	Temporary Agreements				Supporter	Funding Source	Listed in CIP before DIW
		Project Name	Quantity	Unit	Est.Cost (K.Riels)			
						Development Organization		
100501	Khsuem	Forestry soil improvement project	8	time	0	Cambodia Community Development Organization		✓
100501	Khsuem	Forestry law education	0	time	0	Forest administration		✓
Administration and Security								
100501	Khsuem	Land law, fishery, forestry and agriculture laws dissemination	8	time	3200	Department of Agriculture Forestry and Fisheries		□
100501	Khsuem	New village creation/dwelling establishment	0	family	6000	Department of Land Management, Urban Planning & Construction		✓
Gender								
100501	Khsuem	Woman and children's rights dissemination	2	time	0	Department of Social and Veteran Affairs and Youth Rehabilitation		✓
100501	Khsuem	Brainstorming forum with commune leaders and gender focal point on local gender mainstreaming	2	person	130	Department of Women		□
100501	Khsuem	Local leaders and CWCC focal point meeting on Gender mainstreaming in CIP	2	person	130	Department of Women		□
100501	Khsuem	Human rights and laws compliance training to community representative	6	training	0	Association for Development and Human Rights of Cambodia		□

8.2.2 Temporary Agreements for 2009 as per DIW 2008 for Commune: Pir Thnu

Commune GIS	Commune	Temporary Agreements				Supporter	Funding Source	Listed in CIP before DIW
		Project Name	Quantity	Unit	Est.Cost (K.Riels)			
Economic								
100502	Pir Thnu	Water user community formation at Ou Lomot dam	1	Team	2200	Department of Water Resources and Meteorology		<input type="checkbox"/>
100502	Pir Thnu	Pig raising training	1	training	1200	Department of Labor and Vocational Training		<input type="checkbox"/>
Social								
100502	Pir Thnu	Literacy class creation	12	class	0	Department of Education Youth and Sports		<input type="checkbox"/>
100502	Pir Thnu	Budget support for treatment, travel cost, food cost for patient and attendants	86	person	12000	Action For Health		<input type="checkbox"/>
100502	Pir Thnu	Malaria awareness education	1	training	1000	Cambodia Community Development Organization		<input type="checkbox"/>
100502	Pir Thnu	Target trained teachers refresher training	7	person	400	Cambodia Community Development Organization		<input type="checkbox"/>
100502	Pir Thnu	Follow up trained teachers	7	person	400	Cambodia Community Development Organization		<input type="checkbox"/>
100502	Pir Thnu	Support teachers, equipments, and pupil stuffs	446	person	7742	Oversea Mission Fellow ship		<input type="checkbox"/>
100502	Pir Thnu	Mushroom growing training	1	training	1200	Department of Labor and Vocational Training		<input type="checkbox"/>
NREM								
100502	Pir Thnu	Forestry law education	1	time	1300	Forest administration		✓
100502	Pir Thnu	Community forest demarcation	1000	Tree	40000	Forest administration		<input type="checkbox"/>
100502	Pir Thnu	Tree planting along national road	1000	Tree	80000	Forest administration		<input type="checkbox"/>
Administration and Security								
100502	Pir Thnu	Commune land use planning projects	1	time	12000	Department of Land Management, Urban Planning & Construction		<input type="checkbox"/>
100502	Pir Thnu	New village creation/dwelling establishment	100	family	6000	Department of Land Management, Urban Planning & Construction		✓

Commune GIS	Commune	Temporary Agreements				Supporter	Funding Source	Listed in CIP before DIW
		Project Name	Quantity	Unit	Est.Cost (K.Riels)			
Gender								
100502	Pir Thnu	Local leaders and CWCC focal point meeting on Gender mainstreaming in CIP	1	training	12	Department of Women		<input type="checkbox"/>
100502	Pir Thnu	Gender concept training to village and commune leaders	1	training	1200	Department of Women		<input type="checkbox"/>
100502	Pir Thnu	Brainstorming forum with local leaders and focal point on local gender mainstreaming	1	time	13	Department of Women		<input type="checkbox"/>

8.2.3 Temporary Agreements for 2009 as per DIW 2008 for Commune: Snuol

Commune GIS	Commune	Temporary Agreements				Supporter	Funding Source	Listed in CIP befor DIW
		Project Name	Quantity	Unit	Est.Cost (K.Riels)			
Social								
100503	Snuol	Waste dumping area management and improvement	1	place	1000	Department of Environment		<input type="checkbox"/>
100503	Snuol	Budget support for treatment, travel cost, food cost for patient and attendants	175	person	26191	Action For Health		<input type="checkbox"/>
100503	Snuol	Malaria public forum with community	1	training	600	Partners for Development		<input type="checkbox"/>
100503	Snuol	Malaria education and prevention method	0		0	Partners for Development		<input type="checkbox"/>
100503	Snuol	Malaria awareness trainer strengthening	7	person	800	Partners for Development		<input type="checkbox"/>
100503	Snuol	Teacher follow up monitoring after training session	7	person	800	Partners for Development		<input type="checkbox"/>
100503	Snuol	Multi-business creation	0		0	Cambodia Community Development Organization		<input type="checkbox"/>
100503	Snuol	Literacy class materials support	4	class	3600	Oversea Mission Fellow ship		✓
100503	Snuol	Pump wells repairing	10	well	0	Department of Rural Development		<input type="checkbox"/>

District Data Book 2009: Development Plans and Projects

Commune GIS	Commune	Temporary Agreements				Supporter	Funding Source	Listed in CIP before DIW
		Project Name	Quantity	Unit	Est.Cost (K.Riels)			
NREM								
100503	Snuol	Tree planting along national road	1000	Tree	8000	Forest administration		<input type="checkbox"/>
100503	Snuol	Forestry community formation	1	Forestry Community	4000	Forest administration		<input type="checkbox"/>
100503	Snuol	Forestry law education	7	training	2800	Forest administration		✓
100503	Snuol	Mangrove forest protection strengthening	0	training	0	Cambodia Community Development Organization		✓
Administration and Security								
100503	Snuol	New village creation/dwelling establishment	0	family	60000	Department of Land Management, Urban Planning & Construction		✓
100503	Snuol	Human right and related law education	0	time	0	Association for Development and Human Rights of Cambodia		✓
100503	Snuol	Land use planning projects	1	place	12000	Department of Land Management, Urban Planning & Construction		<input type="checkbox"/>
Gender								
100503	Snuol	Gender mainstreaming among local people	1	training	1200	Department of Women		✓
100503	Snuol	Woman and children's rights dissemination	2	time	0	Department of Social and Veteran Affairs and Youth Rehabilitation		✓
100503	Snuol	Brainstorming forum with commune and village leaders and focal point on local gender issues	2	person	130	Department of Women		<input type="checkbox"/>
100503	Snuol	Women rights dissemination	0		0	Association for Development and Human Rights of Cambodia		<input type="checkbox"/>
100503	Snuol	Local leaders and CWCC focal point meeting on Gender mainstreaming in CIP	2	person	130	Department of Women		<input type="checkbox"/>

8.2.4 Temporary Agreements for 2009 as per DIW 2008 for Commune: Srae Char

Commune GIS	Commune	Temporary Agreements				Supporter	Funding Source	Listed in CIP befor DIW
		Project Name	Quantity	Unit	Est.Cost (K.Riels)			
Economic								
100504	Srae Char	Livelihood improvement group formation	2	Team	35696	Department of Agriculture Forestry and Fisheries		<input type="checkbox"/>
100504	Srae Char	Agriculture improvement group formation	2	Team	2500	Department of Agriculture Forestry and Fisheries		<input type="checkbox"/>
100504	Srae Char	Youth farmer club formation	1	Team	420	Department of Agriculture Forestry and Fisheries		<input type="checkbox"/>
100504	Srae Char	Dam repairing	1	place	1800000	Department of Water Resources and Meteorology		✓
100504	Srae Char	Water user community formation	1	Team	0	Department of Water Resources and Meteorology		<input type="checkbox"/>
Social								
100504	Srae Char	Pump wells repair	10	well	0	Department of Rural Development		<input type="checkbox"/>
100504	Srae Char	Literacy class	10	class	0	Department of Education Youth and Sports		✓
100504	Srae Char	School materials support to poor pupils	653	person	1081	Oversea Mission Fellow ship		✓
100504	Srae Char	Ring wells repair	1	well	0	Department of Rural Development		<input type="checkbox"/>
100504	Srae Char	Budget support for treatment, travel cost, food cost for patient and attendants	195	person	29184	Action For Health		<input type="checkbox"/>
100504	Srae Char	Teacher follow up monitoring after training session	7	person	400	Partners for Development		<input type="checkbox"/>
100504	Srae Char	Malaria awareness trainer strengthening	7	person	800	Partners for Development		<input type="checkbox"/>
100504	Srae Char	Malaria awareness education at school	1	training	600	Partners for Development		<input type="checkbox"/>
100504	Srae Char	Teacher/volunteer teacher encouragement needs	5	person	8708	Oversea Mission Fellow ship		✓
NREM								
100504	Srae Char	Forestry law education	3	time	1200	Forest administration		✓

District Data Book 2009: Development Plans and Projects

Commune GIS	Commune	Temporary Agreements				Supporter	Funding Source	Listed in CIP before DIW
		Project Name	Quantity	Unit	Est.Cost (K.Riels)			
100504	Srae Char	Tree planting along national road	1000	Tree	8000	Forest administration		<input type="checkbox"/>
100504	Srae Char	Establishment of NREM protection community	1	Forestry Community	4000	Forest administration		✓
Administration and Security								
100504	Srae Char	Khmer rouge trial dissemination	0		0	Association for Development and Human Rights of Cambodia		<input type="checkbox"/>
100504	Srae Char	Social land concession project support	1	place	6000	Department of Land Management, Urban Planning & Construction		<input type="checkbox"/>
100504	Srae Char	Land law dissemination	8	time	3200	Department of Agriculture Forestry and Fisheries		✓
Gender								
100504	Srae Char	Local leaders and CWCC focal point meeting on Gender mainstreaming in CIP	2	person	130	Department of Women		<input type="checkbox"/>
100504	Srae Char	Woman rights dissemination training	0		0	Association for Development and Human Rights of Cambodia		<input type="checkbox"/>
100504	Srae Char	Brainstorming forum with commune leaders and gender focal point	2	person	130	Department of Women		<input type="checkbox"/>
100504	Srae Char	Gender training to village and commune leaders	1	training	1200	Department of Women		<input type="checkbox"/>

8.2.5 Temporary Agreements for 2009 as per DIW 2008 for Commune: Svay Chreah

Commune GIS	Commune	Temporary Agreements				Supporter	Funding Source	Listed in CIP befor DIW
		Project Name	Quantity	Unit	Est.Cost (K.Riels)			
Economic								
100505	Svay Chreah	Youth farmer club formation	1	Team	400	Department of Agriculture Forestry and Fisheries		<input type="checkbox"/>
100505	Svay Chreah	Livelihood improvement group formation	2	Team	35696	Department of Agriculture Forestry and Fisheries		<input type="checkbox"/>
100505	Svay Chreah	Animal raising training	1	training	1000	Department of Labor and Vocational Training		✓
100505	Svay Chreah	Agriculture improvement group formation	2	training	240	Department of Agriculture Forestry and Fisheries		<input type="checkbox"/>
100505	Svay Chreah	Eco-tourism community operation, Phnom Priam Poan	0		0	Cambodia Community Development Organization		<input type="checkbox"/>
Social								
100505	Svay Chreah	Budget support for treatment, travel cost, food cost for patient and attendants	107	person	16000	Action For Health		<input type="checkbox"/>
100505	Svay Chreah	Non-formal class teaching/generating	3	class	9600	Oversea Mission Fellow ship		✓
100505	Svay Chreah	Mushroom growing training	1	training	1000	Department of Labor and Vocational Training		<input type="checkbox"/>
100505	Svay Chreah	Malarial trained trainer monitoring	7	person	400	Partners for Development		<input type="checkbox"/>
100505	Svay Chreah	Malaria awareness education at school	0		0	Partners for Development		<input type="checkbox"/>
100505	Svay Chreah	Health fund support for health center committee and CC to combat malaria	4	Team	3200	Partners for Development		<input type="checkbox"/>
100505	Svay Chreah	Malaria awareness trainer strengthening	7	person	800	Partners for Development		<input type="checkbox"/>
100505	Svay Chreah	Pump wells repairing	10	well	0	Department of Rural Development		<input type="checkbox"/>
100505	Svay Chreah	Ring wells repair	2	well	0	Department of Rural Development		<input type="checkbox"/>
100505	Svay	Malaria combat planning formulation 3	4	time	1600	Partners for Development		<input type="checkbox"/>

District Data Book 2009: Development Plans and Projects

Commune GIS	Commune	Temporary Agreements				Supporter	Funding Source	Listed in CIP before DIW
		Project Name	Quantity	Unit	Est.Cost (K.Riels)			
	Chreah	months meeting at commune level						
NREM								
100505	Svay Chreah	Kravanh essence awareness dissemination	0	time	0	Cambodia Community Development Organization		✓
100505	Svay Chreah	Forestry law education	0	time	0	Cambodia Community Development Organization		✓
100505	Svay Chreah	Fishery law education	8	time	0	Department of Agriculture Forestry and Fisheries		✓
Administration and Security								
100505	Svay Chreah	Mine exploitation management law dissemination	0	time	0	Cambodia Community Development Organization		✓
100505	Svay Chreah	Social land concession project support	0	family	6000	Department of Land Management, Urban Planning & Construction		✓
Gender								
100505	Svay Chreah	Brainstorming forum with commune leaders and gender focal point on local gender mainstreaming	2	person	120	Department of Women		<input type="checkbox"/>
100505	Svay Chreah	Local leaders and CWCC focal point meeting on Gender mainstreaming in CIP	2	person	120	Department of Women		<input type="checkbox"/>

Source: CDPD, District Level Detail TA resulting from DIW

8.3 Outputs, estimated and actual costs of C/S Fund Projects between 2005 and 2008, by Commune

Commune	Project Type	Budget Year	Output		Quantity	Unit	Unit Cost MR	
			Description	Type			Estimate	Actual
Khsuem	Rural Transport	2005	Single pipe culvert	New	1	Place	1.37	26.52
Khsuem	Rural Transport	2005	Earth road	Repair	1.8	Km	23.00	26.52
Khsuem	Rural Transport	2005	Double pipe culvert	New	1	Place	2.98	26.52
Khsuem	Rural Transport	2006	Single pipe culvert	New	1	Place	1.66	29.83
Khsuem	Rural Transport	2006	Earth road	Repair	0.65	Km	11.14	11.10
Khsuem	Rural Transport	2006	Earth road	Repair	1.7	Km	30.17	29.83
Khsuem	Rural Transport	2008	Earth road	Repair	2.5	Km	54.82	61.00
Khsuem	Rural Transport	2008	Single pipe culvert	New	2	Place	3.75	61.00
Khsuem	Rural Transport	2008	Double pipe culvert	New	1	Place	4.66	61.00
Pir Thnu	Education	2005	Wooden school (general)	New	2	School room	30.33	29.76
Pir Thnu	Rural Transport	2007	Earth road	Repair	1.24	Km	18.03	17.14
Pir Thnu	Rural Transport	2008	Double pipe culvert	New	1	Place	4.62	25.25
Pir Thnu	Rural Transport	2008	Earth road	Repair	0.7169	Km	16.06	25.25
Pir Thnu	Rural Transport	2008	Single pipe culvert	New	2	Place	4.57	25.25
Snuol	Rural Transport	2005	Earth road	Repair	2.4	Km	26.38	34.74
Snuol	Rural Transport	2005	Pipe culvert (general)	New	7	Place	9.15	34.74
Snuol	Rural Transport	2006	Earth road	Repair	1.69	Km	35.47	38.41
Snuol	Rural Transport	2006	Single pipe culvert	New	3	Place	4.42	38.41
Snuol	Rural Transport	2007	Single pipe culvert	New	2	Place	4.13	31.76
Snuol	Rural Transport	2007	Earth road	Repair	1.78	Km	40.48	31.76
Snuol	Rural Transport	2008	Earth road	Repair	2.126	Km	41.32	49.00
Snuol	Rural Transport	2008	Single pipe culvert	Repair	1	Place	1.46	49.00
Snuol	Rural Transport	2008	Single pipe culvert	New	3	Place	6.36	49.00
Srae Char	Rural Transport	2005	Earth road	Repair	1.8	Km	26.50	30.98
Srae Char	Rural Transport	2005	Double pipe culvert	New	2	Place	5.20	30.98
Srae Char	Irrigation	2006	Small water gate	New	1	Place	41.50	39.00
Srae Char	Rural Transport	2007	Earth road	Repair	1.85	Km	30.27	29.45
Srae Char	Rural Transport	2007	Single pipe culvert	New	3	Place	8.10	29.45
Srae Char	Rural Transport	2008	Earth road	Repair	1.4	Km	30.23	50.00
Srae Char	Rural Transport	2008	Single pipe culvert	New	1	Place	1.82	50.00
Srae Char	Rural Transport	2008	Triple pipe culvert	New	2	Place	17.99	50.00
Svay Chreah	Rural Transport	2005	Double pipe culvert	New	1	Place	3.35	27.06
Svay Chreah	Rural Transport	2005	Earth road	Repair	1.5	Km	24.42	27.06

Commune	Project Type	Budget Year	Output		Quantity	Unit	Unit Cost MR	
			Description	Type			Estimate	Actual
Svay Chreah	Rural Transport	2006	Earth road	Repair	2.2	Km	30.28	28.88
Svay Chreah	Rural Transport	2007	Double pipe culvert	New	2	Place	10.89	49.77
Svay Chreah	Rural Transport	2007	Earth road	Repair	2.37	Km	40.77	49.77
Svay Chreah	Rural Transport	2008	Earth road	Repair	1.325	Km	26.56	26.50

Source: PID

8.4 Total Expenditure on C/S Fund Projects by sector and commune between 2005 and 2008

Sector	Total Cost in Million Riels				
	Khsuem	Pir Thnu	Snuol	Srae Char	Svay Chreah
Education		29.76			
Irrigation				39.00	
Rural Transport	128.45	42.39	153.91	110.42	132.21

Source: PID

8.5 Actual 2009 C/S Fund projects by Commune

Commune	Project Type	Project Output		Quantity	Unit	Fund Source (Riels)		
		Description	Type			Total	C/S	Local Contribution
Khsuem	Rural Transport	Earth road	Repair	2	km	39,042,806	38,542,806	500,000
Khsuem	Rural Transport	Single pipe culvert 1.0m diameter	New	1	Place	39,042,806	38,542,806	500,000
Pir Thnu	Rural Transport	Earth road	Repair	1.875	km	36,723,753	36,023,753	700,000
Pir Thnu	Rural Transport	Single pipe culvert 0.6m diameter	New	3	Place	36,723,753	36,023,753	700,000
Pir Thnu	Rural Transport	Single pipe culvert 1.0m diameter	New	1	Place	36,723,753	36,023,753	700,000
Snuol	Rural Transport	Earth road	Repair	0.95	km	48,649,837	47,949,837	700,000
Snuol	Rural Transport	Single pipe culvert 0.8m diameter	New	3	Place	48,649,837	47,949,837	700,000
Snuol	Rural Transport	Earth road	Repair	0.366	km	48,649,837	47,949,837	700,000
Snuol	Rural Transport	Single pipe culvert 0.8m diameter	New	1	Place	48,649,837	47,949,837	700,000
Snuol	Rural Transport	Single pipe culvert 0.6m diameter	New	5	Place	48,649,837	47,949,837	700,000
Snuol	Rural Transport	Earth road	Repair	0.324	km	48,649,837	47,949,837	700,000
Snuol	Rural Transport	Single pipe culvert 0.6m diameter	New	1	Place	48,649,837	47,949,837	700,000
Srae Char	Rural Transport	Earth road	Repair	0.5	km	52,701,114	52,001,114	700,000
Srae Char	Rural Transport	Single pipe culvert 1.0m diameter	New	1	Place	52,701,114	52,001,114	700,000
Srae Char	Rural Transport	Single pipe culvert 0.6m diameter	New	1	Place	52,701,114	52,001,114	700,000
Srae Char	Rural Transport	Earth road	Repair	1.65	km	52,701,114	52,001,114	700,000
Srae Char	Rural Transport	Single pipe culvert 0.8m diameter	New	3	Place	52,701,114	52,001,114	700,000
Svay Chreah	Rural Transport	Earth road	Repair	1.85	km	44,126,949	43,426,949	700,000

Commune	Project Type	Project Output		Quantity	Unit	Fund Source (Riels)		
		Description	Type			Total	C/S	Local Contribution
Svay Chreah	Rural Transport	Single pipe culvert 0.6m diameter	New	2	Place	44,126,949	43,426,949	700,000
Svay Chreah	Rural Transport	Single pipe culvert 0.8m diameter	New	2	Place	44,126,949	43,426,949	700,000

Source: PID

9 District level Projects from 2006 to 2009

District Initiative Projects (DIPs) are funded by Danida, DFID and PSDD (UNDP, DFID and SIDA).

Funding for 2006-2008

Between 2006 and 2008 there were 14 provinces funded by PSDD and 10 by Danida and DFID. The list of provinces and who funded these is below

Danida and DFID funded DIPs:

Kampong Cham	Kampong Speu	Koh Kong	Kratie	Monduliri
Pursat	Ratanakiri	Siem Reap	Sihanoukville	Kep

PSDD funded DIPs:

Banteay Meanchey	Battambang	Kampong Chhnang	Kandal	Phnom Penh
Prey Veng	Svay Rieng	Takeo	Kampong Thom	Preah Vihear
Stung Treng	Kampot	Oddar Meanchey	Pailin	

Funding for 2009

In 2009 there was a change to the number of provinces funded by the two streams. Danida and DFID were still funding the same 10 provinces they had been funding the previous three years, but two more provinces were added *Kampong Thom and Kampot*. Now PSDD funds 12 provinces and Danida and DFID fund 12.

9.1 District Initiative Infrastructure Projects from 2006 to 2009

9.1.1 District Initiative Infrastructure Projects for 2006 to 2008

Date	Project Name	Implementing Agencies	Budget (US\$)	Project Output & Capacity	Number of Beneficiaries
2006	Rehabilitation of dam and canal of Olmot	Inter-communes	13,670.00		
2007	Repair canal of O Lamout	Inter-commune	17,000.00		

9.1.2 District Initiative Infrastructure Projects in 2009

No District Initiative Infrastructure Projects have been implemented in this district for 2009

9.2 District Initiative Service Projects from 2006 to 2009

9.2.1 District Initiative Service Projects for 2006 to 2008

Date	Project Names	Implementing agencies	Budget (US\$)	Project Output & Capacity	Number of Beneficiaries
2006	Education on village and public cleanness	Environment department	850.00		
2006	Education of forestry law, use and protection	Environment department	800.00		
2006	Construction of posters on wildlife and forest protection	Environment department	510.00		
2006	Education of land law related with NREM	Land management department	600.00		
2006	Vocational training on NTFP processing skills	Women Affairs department	1,500.00		
2007	Establish community fishery	Fishery Admin	700.00		
2007	Dissemination on animal vaccination	District Agri	2,175.00		
2007	Training on dry season rice cultivation technique	District Agri	320.00		
2007	Training on wet season rice cultivation technique	District Agri	400.00		
2007	Demonstration on high yield rice cultivation	District Agri	800.00		
2007	Training and demonstration on agriculture diversification system	District Agri	2,650.00		
2007	Training on family fish raising	District Agri	400.00		
2007	Training on prevention from illegal fishing activities	Fishery Admin	341.80		
2007	Forestry law and wildlife protection exstention	Forestry Amin Sangkat	300.00		
2007	Training on village hygiene and public places	District Environment	375.00		
2007	Dissemination on protection on environment and natural resources	District Environment	1,080.00		
2007	Dissemination on land management and NRM	District Land	408.00		
2008	Training on intergrated farming system and demonstation	District AGRI	1,383.00	2 courses	50 persons
2008	Training and demonstation on mushroom making (20 family)	District AGRI	1,299.50	5 courses	100 persons
2008	Training and demonstation on caw- buffalo vacinnation (300 animals)	District AGRI	1,020.00	5 courses	300 persons
2008	Training and demonstation on dry rice season and rice seed	Other agency	2,000.00	4 courses	105 persons
2008	Training on Cow raising and Cow providing (10 cows)	Singha Savon company	7,400.00	10 cows	50 persons
2008	Training and establish family fingerling station.	Kou Sopear company	4,400.00	2 stations	500 persons
2008	Establish tree nursery for distribution (10 nurseries)	Forestry administration	1,039.11	10 nurseries	500 persons
2008	Establish federation of communittee	Singha Savon company	2,300.00	4 courses	120 persons
2008	Strengthening and establish Prey Chhrey Meaing ecotourism	Other agency	5,700.00	2 communittee	100 persons

9.2.2 District Initiative Service Projects in 2009

Project Name	Sector	Implementing Agency	Budget	Project outputs/ capacities	No. of Beneficiaries		Progress	Remarks on Issues of Progress
					Total	Female		
Training and distribute fish fingerlings	AGR	Fisheries Admin	\$2,260.00	35 ponds	182	94	0%	Will start in mid-July 2009
Training and provide Cow Bank	AGR	PMC	\$8,124.00	15 caws	78	40	0%	The first bidding will be conducted on 3 July 2009
Cow-buffalo vaccination	AGR	PMC	\$2,324.00	1200 caws	1560	811	0%	The first bidding will be conducted on 3 July 2009
Training and demomstration on integrated farming system (pig)	AGR	PMC	\$2,244.00	4 courses	234	121	0%	The first bidding will be conducted on 3 July 2009
Training to the village animal health workers (VAHWs)	AGR	PDA	\$1,068.00	4 courses	28	15	0%	Will start in mid-July 2009
Training and demonstration on rice planting technique	AGR	PMC	\$2,452.00	3 courses	260	135	0%	The first bidding will be conducted on 3 July 2009

9.3 Inter Commune Council Projects in 2008 and 2009

9.3.1 ICC Projects in 2008

No ICC projects in this district at this time

9.3.2 ICC Projects in 2009

No ICC projects in this district at this time

Source: ICC project, Ministry of Interior (DoLA), -UNDP project for Local Governance – DDLG

9.4 Other Projects in 2008 and 2009

9.4.1 RPRP

There are no RPRP projects being implemented in this district or province at this time. The RPRP is only being implemented in Svay Rieng and Prey Veng

9.4.1.1 RPRP Projects from 2006 to 2008

No RPRP projects in this district at this time

9.4.1.2 RPRP Projects in 2009

No RPRP projects in this district at this time

9.4.2 Seth Korma

9.4.2.1 Seth Koma 2007

There are no Seth Korma projects being implemented in this district or province at this time.

Source: UNICEF

9.4.2.2 Seth Koma 2008

There are no Seth Korma projects being implemented in this district or province at this time.

Source: UNICEF

9.4.2.3 Seth Koma 2009

There are no Seth Korma projects being implemented in this district or province at this time.

Source: UNICEF

SECTION D: SERVICES AND ORGANIZATIONS

10 Infrastructure

10.1 Length of and Expenditure on Roads in 2008, by District

Roads	Kratie	Chhlong	Chetrborei	Preaekbrasop	Sambor	Snoul	Kratie
Length of paved road in the district	280	27	70	0	85	73	25
Length of unpaved roads in the district	364	69	96	153	0	0	46
Amount spent on construction of roads in 2008 (\$)	33,727	n/a	33,727	0	n/a	n/a	n/a
Amount spent on repair and rehabilitation of roads in 2008 (\$)	41,867	n/a	0	41,867	n/a	n/a	n/a

Note 1: Please note that these data are not necessarily complete or correct. The data are derived from government agencies at provincial and district level which used different recording systems, did not always have complete data or were, sometimes, less than willing to share their data.

Note 2: Please be aware that these data are incomplete due to the fact that the amounts for the construction, repair and rehabilitation recorded reflect only funds provided by the government, not the contributions by any other parties.

10.2 Scale of and Expenditure on Irrigation in 2008, by District

Irrigation	Kratie	Chhlong	Chetrborei	Preaekbrasop	Sambor	Snoul	Kratie
Number of irrigation schemes operating in 2008	83	47	n/a	10	18	3	5
Total nr of hectares under irrigation in dry season 2008	7,388	2,881	1,489	1,671	135	315	897
Total funds spent in 2008 on construction of irrigation systems (\$)	10,200	0	n/a	0	n/a	10,200	n/a
Total funds spent in 2008 on rehabilitation/repair of irrigation systems (\$)	465,226	22,218	n/a	443,008	n/a	0	n/a
Total funds spent in 2008 on operation and maintenance (\$)	14,985	0	n/a	14,985	n/a	0	n/a

Note 1: Please note that these data are not necessarily complete or correct. The data are derived from government agencies at provincial and district level which used different recording systems, did not always have complete data or were, sometimes, less than willing to share their data.

Note 2: Please be aware that the data above are incomplete as these only reflect funds provided by the government, not the contributions by farmers or other parties.

10.3 Power Supply in 2008, by District

Electricity	Kratie	Chhlong	Chetrborei	Preaekbrasop	Sambor	Snoul	Kratie
Total number of electricity connections to households	7,852	1,542	0	1,181	400	850	3,879
Total number of electricity connections to agencies, companies, organizations	12	n/a	0	2	5	5	n/a
Total volume in KWh of electricity consumed last in 2008	843,973	n/a	0	40,973	36,000	800,000	n/a
Total amount collected from users for consumed electricity (in KR) (\$)	176,643	n/a	0	32,643	0	144,000	n/a
Per capita electricity consumption in 2008 in Kwh	13	n/a	0	48	15	250	n/a

Note 1: Please note that these data are not necessarily complete or correct. The data are derived from government agencies at provincial and district level which used different recording systems, did not always have complete data or were, sometimes, less than willing to share their data.

Note 2: These data only record electricity provided by electricity companies and does not include homes powered by generators or batteries (for this information see Section B: General Profile, Part 1: General Information; table 1.3.1 and chart 1.3.4).

Note 3: In most provinces electricity is only provided through town-based networks

Note 4: Per capita consumption is calculated by dividing the total volume of electricity produced in 2008 by the number of people living in each district as per the 2008 census (for the provincial data it is calculated against the number of people living in the province)

11 Health Facilities

Please note that the Operational District (health) boundaries are different to the administrative district boundaries. Therefore the data provided here shows the facilities, staff, NGOs etc in each Operational District within the province NOT the administrative district.

Acronyms

Com Cov	Commune Covered	MW2	Secondary Midwives
CPA	Complementary Package of Activities	NU1	Primary Nurse
Dr	Doctor	NU2	Secondary Nurse
FDH	Former District Hospital	OD	Operational District
HC	Health Center	Others	Other Staff
HC (NB)	Health Center no building	PHD	Provincial Health Department
HP	Health Post	Pop 04-05	Population Covered 2004 or 2005
MA	Medical Assistant	RH	Referral Hospital
MPA	Minimum Package of Activities	Vil Cov	Village Covered
MW1	Primary Midwives	VIL-HC	Distance from Village to Health Center

11.1 Health Facilities in the Province, by Operational District

Kratie	OD	RH	HC	HP
Chhlong	1	1	10	3
Kratie	1	1	12	5
Total	2	2	22	8

11.2 Health Facilities and Staff in the province, by Operational District

This table shows health facilities, staff and coverage of health facilities in each operational district.

No	Facility Name	Type	Class	Dr	Ma	Nu2	Nu1	Mw2	Mw1	Others	Com Cov	Vil Cov	Pop. 04-05
Chhlong													
1	Chambak	HC	MPA	0	0	2	2	1	2	2	2	11	15,886
2	Chroy Thma	HC	MPA	0	0	1	1	1	2	2	4	11	15,471
3	Damrei Phong	HC	CPA	0	0	0	2	0	0	4	2	6	3,348
4	Daun meas	HP	None+MI	0	0	0	0	0	0	0	1	1	2,202
5	Kanhchor	HC	MPA	0	0	1	3	2	1	1	3	10	14,508
6	Khsach Andet	HC	MPA	0	0	2	2	2	1	1	2	7	19,998
7	Khsem	HC	MPA	0	0	2	2	1	0	4	2	9	7,291
8	Pongro	HC	MPA	0	0	1	1	1	0	4	3	8	14,821
9	Preaek Prasob	FDH	CPA+MPA	0	2	3	5	1	2	4	1	9	12,353

District Data Book 2009: Development Plans and Projects

No	Facility Name	Type	Class	Dr	Ma	Nu2	Nu1	Mw2	Mw1	Others	Com Cov	Vil Cov	Pop. 04-05
10	Snuol	FDH	CPA+MPA	1	2	6	6	4	0	8	3	20	24,506
11	Srae Roneam	HP	None+MI	0	0	0	0	0	0	0	1	1	1,084
12	Stueng Thum	HP	None+MI	0	0	0	0	0	0	0	1	1	1,122
Total:				1	4	18	24	13	8	30	25	94	132,590
Kratie													
1	Ta Mau	HC	MPA	0	0	1	3	1	2	1	2	11	13,261
2	Bos Leav	HC	MPA	0	0	1	3	0	1	4	2	13	10,698
3	Chrouy Banteay	HC	MPA	0	0	2	2	2	1	2	1	7	9,218
4	Kantuot	HC	MPA	0	0	1	3	0	2	2	3	20	16,617
5	Ou Krieng	HC	MPA	0	0	1	2	0	1	3	4	21	14,463
6	Ou Ruessei	HC	MPA	0	0	1	4	3	2	1	3	12	18,197
7	Rakar Kandal	HC	MPA	0	1	0	3	2	3	1	2	7	12,264
8	Sambo	FDH	CPA+MPA	0	1	2	5	1	1	5	4	21	20,157
9	Sandan	HC	MPA	0	0	1	6	0	0	4	4	13	14,476
10	Saob	HC	MPA	0	0	2	3	0	0	3	3	10	12,012
11	Svay Chreah	HC	MPA	0	0	2	1	1	0	2	2	9	7,803
12	Thma Krae	HC	MPA	0	0	1	7	2	0	1	3	7	12,377
Total:				0	2	15	42	12	13	29	33	151	161,543
Total All				1	6	33	66	25	21	59	58	245	294,133

Source: MEDiCAM – Infrastructure - (http://www.medicam-cambodia.org/hsi/health_system/srch/index.asp?cboLcn=6&cmdSearch=Search&cboCHName=&cboType=)

11.3 Deliveries in 2007 in the Province, by Operational District

OD	Deliveries	Deliveries at home		Deliveries	Total deliveries	Total deliveries
	at HC	By Health Staff	ByTBAs	at RH	by Health Staff	by health staff and TBAs
Chhlong	47	592	656	232	871	1527
Kratie	199	504	1304	558	1261	2565
<i>Sub-total</i>	<i>246</i>	<i>1096</i>	<i>1960</i>	<i>790</i>	<i>2132</i>	<i>4092</i>

Source: MoH, Annual Statistics 2007

12 Education³

12.1 Schools, Classes, Students, Staff, for all levels, for 2007/2008 by District

District	Number of Schools	Disadv. Schools	Number of Classes	Classes in Pagoda	Enrollment		Repeaters		Teaching Staff		Non-Teaching Staff		Total Staff	
					Total	Girl	Total	Girl	Total	Female	Total	Female	Total	Female
Chhlaung	41	1	357	0	12,802	6,162	919	390	398	223	75	19	473	242
Kratie	100	2	645	2	22,559	10,572	1,833	763	729	399	146	51	875	450
Prek Prasap	66	0	449	0	15,214	7,301	1,423	561	542	299	96	21	638	320
Sambo	57	1	360	0	12,676	6,164	1,401	624	238	84	29	8	267	92
Snuol	54	1	302	7	12,182	5,663	1,449	643	200	58	22	4	222	62
Whole Province	318	5	2,113	9	75,433	35,862	7,025	2,981	2,107	1,063	368	103	2,475	1,166
- Urban Area	100	2	645	2	22,559	10,572	1,833	763	729	399	146	51	875	450
- Rural Area	161	2	1,108	7	40,198	19,126	3,791	1,594	1,140	580	193	44	1,333	624
- Remote Area	57	1	360	0	12,676	6,164	1,401	624	238	84	29	8	267	92

12.2 Characteristics of Schools and School Principals for 2007/2008 by Commune

Commune	Number of Schools				2 - Shift	Floating	Schools	Attached	Schools Without		Characteristics of School Principals (Incharge)			
	Pre-Sch	Primary	College	Lycee	Schools	Schools	in Pagoda	Pre-Sch	Water Sup.	Latrine	Avg. Age	Avg. Service	U.Sec+ Ed.	Female
Khsum	0	9	1	0	4	0	0	0	3	2	43.8	18.8	3	1
Pir Thnu	0	6	1	0	4	0	0	0	0		42.6	18.7	2	0
Snuol	3	12	2	1	8	0	0	3	5	4	43.1	17.3	2	0
Srae Char	0	12	1	0	12	0	0	0	9	10	36.6	12.6	4	0
Svay Chreah	0	5	1	0	4	0	1	0	1	1	50.3	22.8	0	0

³ All the data for section 12 comes from the Ministry of Education, Youth and Sport (MoEYS)

12.3 Enrolment by Level of Education, 2006/2007 by Commune

Commune	School	Pre school		Primary School		Lower Secondary School		Upper Secondary School		Enrolment	
		Total	Female	Total	Female	Total	Female	Total	Female	Total	Female
Khsuem	10	0	0	1460	702	55	18	0	0	1515	720
Pir Thnu	7	0	0	1138	531	42	14	0	0	1180	545
Snuol	17	97	57	3070	1452	772	349	120	39	4059	1897
Srae Char	12	0	0	2103	956	34	21	0	0	2137	977
Svay Chreah	6	0	0	1802	916	259	141	0	0	2061	1057

12.4 Enrolment by Level of Education, 2007/2008 by Commune

Commune	School	Pre school		Primary School		Lower Secondary School		Upper Secondary School		Enrolment	
		Total	Female	Total	Female	Total	Female	Total	Female	Total	Female
Khsuem	10	0	0	1733	822	122	55	0		1855	877
Pir Thnu	7	0	0	1181	548	109	34	0		1290	582
Snuol	18	100	54	3136	1475	894	428	232	69	4362	2026
Srae Char	13	0	0	2481	1094	87	36	0		2568	1130
Svay Chreah	6	0	0	1783	859	324	189	0		2107	1048

12.5 Aspects of Enrolment for 2007/2008 by Commune

Commune	% Repeaters (Total)			% Over-age Enrollment (Total)			% Repeaters (Girl)			% Over-age Enrollment (Girl)		
	Primary	L.Sec.	U.Sec.	Primary	L.Sec.	U.Sec.	Primary	L.Sec.	U.Sec.	Primary	L.Sec.	U.Sec.
Khsuem	17.2	0.0	0.0	29.7	58.2	0.0	16.3	0.0	0.0	30.0	38.2	0.0
Pir Thnu	18.2	0.9	0.0	26.6	69.7	0.0	16.2	0.0	0.0	27.6	58.8	0.0
Snuol	9.4	5.1	0.0	18.2	59.4	49.1	8.7	3.0	0.0	16.8	57.7	39.1
Srae Char	14.7	0.0	0.0	17.9	62.1	0.0	15.4	0.0	0.0	17.6	58.3	0.0
Svay Chreah	12.8	0.3	0.0	29.9	59.3	0.0	12.8	0.0	0.0	28.3	54.0	0.0

12.6 School Buildings for all schools in the District for 2007/2008, by Commune

Commune	Total Number of		Concrete/Brick Structure		Wooden Structure		Bamboo Structure		New Buildings		Buildings Without Good		
	Buildings	Rooms	Buildings	Rooms	Buildings	Rooms	Buildings	Rooms	Repaired	Constructed	Floor	Roof	Wall
Khsuem	14	49	6	29	8	20	0	0	1	4	2	1	4
Pir Thnu	8	33	7	30	1	3	0	0	0	3	0	0	0
Snuol	27	106	21	94	6	12	0	0	3	8	6	3	5
Srae Char	14	54	8	40	6	14	0	0	0	4	7	1	2
Svay Chreah	10	45	6	30	4	15	0	0	1	1	2	3	4

12.7 Conditions of Classrooms and Existence of Separate School Office and Library, by Commune

Commune	Number of Class rooms	Number of Classrooms			Classrooms Without Good			Number of Furniture needed				Schools with Separate	
		in Pagoda	New Repaired	New Constr.	Floor	Roof	Wall	Desks	Chairs	Black-board	Teacher Table	Office	Library
Khsuem	46	0	1	8	5	3	9	92	92	5	5	2	2
Pir Thnu	28	7	0	15	0	0	0	10	10	1	1	3	1
Snuol	77	0	12	37	19	9	14	167	155	10	10	10	4
Srae Char	46	0	0	9	20	5	7	119	59	2	4	3	0
Svay Chreah	29	0	1	6	5	8	8	0	0	0	2	5	4

12.8 Community Participation and Financing across all schools in the District for 2007/2008 by Commune

Commune	Parent Association				Commu. Teachers	Teaching Monks	PAP Fund (Riel)		Number of Schools Obtaining Funds from				
	Exists	Held Meet	Total	Female			per Student	per School	Sch. Income	Community	Gvt. For building	Abroad	IOs/NGOs
Khsuem	10	10	6	1	0	0	9,397	1,524,336	0	0	0	0	0
Pir Thnu	7	7	5	1	0	0	9,405	1,990,200	0	0	0	0	0
Snuol	18	18	5	1	7	0	9,947	2,463,006	0	0	1	0	2
Srae Char	11	11	6	1	0	0	6,984	1,697,010	0	0	1	0	0
Svay Chreah	6	6	5	2	2	0	7,836	2,691,617	0	0	0	0	1

12.9 Percentage Student Flow Rates and Graduation by level 2006/2007, by Commune

Commune	Primary Level (Grades 1-6)			Lower Secondary Level (Grades 7-9)			Upper Secondary Level (Grades 10-12)			Successful Candidates		
	Promotion	Repetition	Dropout	Promotion	Repetition	Dropout	Promotion	Repetition	Dropout	Grade 6	Grade 9	Grade 12
Khsuem	81.1	20.4	-1.5	92.7	0.0	7.3	0.0	0.0	0.0	73	0	0
Pir Thnu	74.0	18.9	7.1	83.3	2.4	14.3	0.0	0.0	0.0	68	0	0
Snuol	78.8	9.6	11.6	88.2	6.0	5.8	99.2	0.0	0.8	257	110	0
Srae Char	68.7	16.7	14.7	79.4	0.0	20.6	0.0	0.0	0.0	74	0	0
Svay Chreah	82.0	12.7	5.4	75.7	0.4	23.9	0.0	0.0	0.0	171	23	0

13 Staff and Resources at the District

This chapter presents data from the District Information System, collected around the middle of 2009 unless otherwise specified.

13.1 District Councilors elected in 2009

Name	Sex	Year of Birth	Function	Phone
ស៊ុំ ជួន	M	1950	Chairperson of The Council	012-420 896
កុយ គាន	M	1944	Councillor	
យឹម សិរិទ្ធ	M	1947	Councillor	012-520 320
ហួនឈួន	M	1949	Councillor	012-310 524
ថោង សុវណ្ណារី	F	1960	Councillor	012-312 083
ព្រំ ចាន់ធិត	M	1948	Councillor	089-753 242
ឡាយ ប៊ុនធឿន	M	1954	Councillor	012-731 525
ហេង ប៊ុច	F	1969	Councillor	092-862 291
គិន លេវ	M	1944	Councillor	012-284 610
ញឹម សាគុណ	M	1953	Councillor	012-371 582
អ៊ឹម ផន	M	1937	Councillor	092-726 093
អន ឆេងអ៊ិន	M	1977	Councillor	092-941 933
សួស ទិត្យ	M	1947	Councillor	092-840 022
កែវ ចាន់ផល	M	1972	Councillor	017-656 439
ហាក់ មាត់	M	1954	Councillor	092-467 236

13.2 Committees of the Council

Please note at the time of producing the district data books the composition of the committees was not known for all district councils and therefore data were not available for 13.2.1, 13.2.2, 13.2.3.

13.2.1 Technical Facilitation Committee

13.2.2 Women's and Children's Affairs Committee

13.2.3 Procurement Committee

13.3 Board of Governors

Name	Sex	DoB	Function	Salary Level	Body	Phone
អ៊ុំ សារ៉ុន	M	1952	District Governor	ក.ព.៦	High Ranking Civil Servant	012-931 869
ម៉ែន វណ្ណា	M	1973	District Deputy Governor	ក.ព.១២	High Ranking Civil Servant	012-645 813
ខៀវ សុផែ	F	1969	District Deputy Governor	គ.ព.៩	Ministry of Education, Youth and Sports	099-454 566
តីក ត្រាង	M	1969	District Deputy Governor	ខ.ព.១០	Medium Civil Servant	

13.4 Offices under Sala Krong, Sala Srok and Sala Khan

Office Name	Chief		Deputy Chief		No. of Staff				Office Area (m2)	No of vehicle (public or program)	
					State		Contract			vehicle	moto
	M	F	M	F	M	F	M	F			
District/ Khan Cabinet	0	0	0	0	11	6	0	0	0	0	0
Adminnistration Office	0	0	1	0	2	0	0	0	0	0	0
Economy Office	0	0	0	0	0	0	0	0	0	0	0
Social Affair Office	0	0	0	0	0	0	0	0	0	0	0

13.5 Municipality/District/Khan line offices

Office Name	Chief		Deputy Chief		No. of Staff				Office Area (m2)	No of vehicle (public or program)	
					State		Contract			vehicle	moto
	M	F	M	F	M	F	M	F			
District/ Khan Police Headquarter	1	0	4	0	119	0	0	0	105	0	6
District/ Khan Military Police Headquarter	1	0	3	0	9	0	0	0	77	1	1
District/ Khan Military Subregion	1	0	4	0	60	0	0	0	55	1	0
Planning Office	0	0	0	0	1	0	0	0	0	0	0
Women Affairs Office	0	0	0	0	0	1	0	0	0	0	0
Environment Office	1	0	0	0	0	0	1	0	35	0	1
Education Office	1	0	1	0	6	1	0	0	84	0	0
Agriculture Office	1	0	1	0	0	0	0	0	202.35	0	2
Culture Office	0	0	1	0	1	0	0	0	0	0	0
Information Office	0	0	1	1	0	0	0	0	0	0	0
Public Work Office	1	0	0	0	1	0	0	0	72	0	0
Lan Management Office	1	0	1	0	3	0	0	0	81.25	0	0
Industry Office	1	0	0	0	0	0	0	0	0	0	0
Forestry Administration Sangkat	3	0	7	0	8	0	0	0	153	0	2
Wildlife Sanctuary Unit	1	0	1	0	0	0	30	0	189	1	0

13.6 Properties and Equipment of District Administration

13.6.1 Buildings

Description	Unit	Number	Remark
Office building type			
- Concrete	building	1	
- Wood	building	0	
- Mixed	building	0	
Total floor space	m2		
- Concrete	m2	221.6	

Description	Unit	Number	Remark
- Wood	m2	0	
- Mixed	m2	0	
Building condition			
- Concrete	%	80	
- Wood	%	0	
- Mixed	%	0	
Office reserved land area	m2	0	
Total office land area	m2	10,440	

13.6.2 Means of Transport available at the District Administration

Description	Unit	Number	Remark
Vehicle (type, size and condition)	Vehicle	0	
Motorcycle (type, size and condition)	Motor	0	

13.6.3 Equipment in District Offices

Description	Unit	Number	Remark
Generator	per set	0	
Photocopy machine at the office	per set	0	
Private photocopy machine at the district town	place	3	
Telephone network (mobile line service)	network	4	
Telephone network (land line service)	network	0	
Fax (include Fax number)	per set	0	
Computer	per set	1	
Printer	per set	0	
Scanner	Per set	0	
Number of computers those can access Internet and email services in the municipality/ district/khan office (including the technical line offices (please provide the email address)	set	0	
Typewriters (including the technical line offices)	per set	0	
Staff of Municipality/district/khan office can use computer	person	2	

13.6.4 Equipment and facilities at the District Town

Description	Unit	Number	Remark
Availability of electricity at noon	Nr Hours	12	
Private internet and email services in the municipality/ district/khan town.	place	0	

13.7 Registered Revenue of the District Administration in 2008⁴

Sources of Revenue	Revenue Collecting Agency	Estimated annual revenue (In Riels)
Public Lightening Tax	District/ Khan Taxation Unit	583,800
Lodging Tax (Guest House and Hotel)	District/ Khan Taxation Unit	901,400
Slaughter Hosue	District/ Khan Taxation Unit	1,830,000
Patent	District/ Khan Taxation Unit	7,450,000
Transportation Tax	District/ Khan Taxation Unit	6,913,000
Business Tax	District/ Khan Taxation Unit	2,882,126
Selling Documents	District/ Khan Taxation Unit	385,800

⁴ Please note that the data in this table are at best estimates. If the table appears blank it does not mean there is no revenue, just that the data have not been recorded/entered.

13.8 Services in the District

13.8.1 Public Sector Services

Type of Infrastructure/services	Unit	Number	
		Public	Private
Schools			
Pre-school	room	2	0
Primary School	room	203	0
Secondary school	room	39	0
High School	room	20	0
University	room		
Health			
Health post	place	3	0
Health center	place	3	0
Referral Hospital	bed		

13.9 Civil Society Organizations active in the District

13.9.1 NGOs, Associations, Programs and Projects

Name	Abbr.	Sector Activities	No. of Target Communes	No. of Target Villages	Office in District
OMF	OMF	អប់រំ	3	10	Yes
CDCam	CDCam	ព្រឹទ្ធសភា	1	2	Yes

13.9.2 Political Parties active in the Municipality, District and Khan

Name	Abbr.	Office in District
Cambodian People Party	CPP	Yes
FUNCINPEC Party	FUNCINPEC	Yes
NRP	NRP	Yes
SAM RAINSY Party	Sam Rainsy Party	Yes

13.10 Private Sector Organizations

13.10.1 Registered Companies in 2008, by District

On private sector at commune and/or district level	Kratie	Chhlong	Chetrborei	Preaekbrasop	Sambor	Snoul	Kratie
Businesses and Companies							
Number of registered agricultural enterprises (except family farms)	1	0	0	0	0	1	0
Number of registered shops, restaurants, transporters and other services	401	n/a	n/a	n/a	n/a	279	122
Number of manufacturing companies	18	6	0	10	0	2	0
Number of registered forestry enterprises	25	6	3	1	8	7	0
Number of registered mining companies	1	0	0	0	0	1	0
Number of financial institutions	8	4	0	1	1	2	0
Number of other commercial institutions	1	n/a	n/a	n/a	n/a	1	n/a
Estimated number of informal enterprises (not registered)	245	n/a	n/a	n/a	n/a	245	n/a
Employment							
Number of people employed in 2008 by companies or any other enterprises	1,437	n/a	n/a	37	n/a	1,400	n/a
Investment							
Amount invested in 2008 by private sector (\$)	n/a	n/a	n/a	n/a	n/a	n/a	n/a
Markets							
Number of markets, operating at least weekly	25	8	10	3	1	1	2

Note: These data are not comprehensive as different companies and business are registered with different departments and not all departments were able or willing to provide detailed information. The number of informal enterprises reflects a rough estimate, made at provincial level and could not be verified.

Source: Unofficially collected at Provincial Level

13.10.2 Farmers in 2008, by District

Credit	Kratie	Chhlong	Chetrborei	Preaekbrasop	Sambor	Snoul	Kratie
Volume of credit provided to farmers in 2008 (\$)	-	n/a	n/a	n/a	n/a	n/a	n/a
Number of farmers receiving credit in 2008	-	n/a	n/a	n/a	n/a	n/a	n/a
Volume of credit provided to companies in 2008 (\$)	-	n/a	n/a	n/a	n/a	n/a	n/a

Note: Please note that these data are not necessarily complete or correct. The data are derived from government agencies at provincial and district level which used different recording systems, did not always have complete data or were, sometimes, less than willing to share their data.

Source: Unofficially collected at Provincial Level

SECTION E: POVERTY DATA

14 Data on Poverty

14.1 Predicted Poverty Rates for 2009, by commune

The **Predicted Family Poverty Rate** is based on a statistical model (robust multilevel mixed effect regression) at village level developed by the NCDD M&E Unit and uses CDB data for making an estimate of the predicted poverty rate (this is: the portion of total families in the district or commune who are expected to be poor) for the following year using current year data.

The basis for this predicted poverty rate also uses IDPoor (a project of the Ministry of Planning with technical assistance provided by GTZ) data

Commune	2004	2009
Khsuem	47.90%	40.90%
Pir Thnu	48.50%	37.40%
Snuol	43.10%	33.80%
Srae Char	49.30%	40.80%
Svay Chreah	49.90%	44.70%

14.2 Poverty data from survey

14.2.1 Identification of Poor Households Program (IDPoor)

The Ministry of Planning IDPoor Program has developed standardized Procedures for Identification of Poor Households in rural areas. These Procedures are implemented using a participatory and consultative process by sub-national government structures and community representatives.

The IDPoor Program is managed by the Ministry of Planning (MOP), in cooperation with the Ministry of Interior's Department of Local Administration (DOLA). The program is supported by the Federal Republic of Germany, with technical assistance provided by German Technical Cooperation (GTZ). In 2009, AusAID also provided funding support to the Program.

Objective

The IDPoor Program aims to implement the Procedures for Identification of Poor Households in rural areas as widely as possible, in order to provide data on the level of poverty of areas and households that can be used by a large range of institutions and organizations for targeting services and development assistance to poor areas and poor households.

Coverage: During 2007, 2008 and 2009 the IDPoor Procedures have been implemented in 18 provinces (with partial or complete coverage), covering a total of around 7000 rural villages. The MOP and a number of NGO partners who are Health Equity Fund Operators have collaborated in collecting this data from different areas.

Categorization: Identified poor households are classified under two poverty categories: Poor Level 1 (very poor), and Poor Level 2 (poor). Households are classified based on data collected using a standard questionnaire, together with consideration by villagers of these households' special circumstances.

Further information: Please go to the IDPoor Program webpage at www.mop.gov.kh/Projects/IDPoor/tabid/154/Default.aspx

Commune	Poor 1 HHs	Poor 2 HHs	Poor 1 HHs	Poor 2 HHs	Total Poor 1&2 HHs	Total HHs in Commune
Khsuem	129	189	9.1%	13.3%	22.3%	1423
Pir Thnu	419	283	39.0%	26.4%	65.4%	1074
Snuol	348	420	13.2%	16.0%	29.2%	2628
Srae Char	384	505	16.4%	21.6%	38.1%	2335
Svay Chreah	336	274	21.1%	17.2%	38.2%	1595